



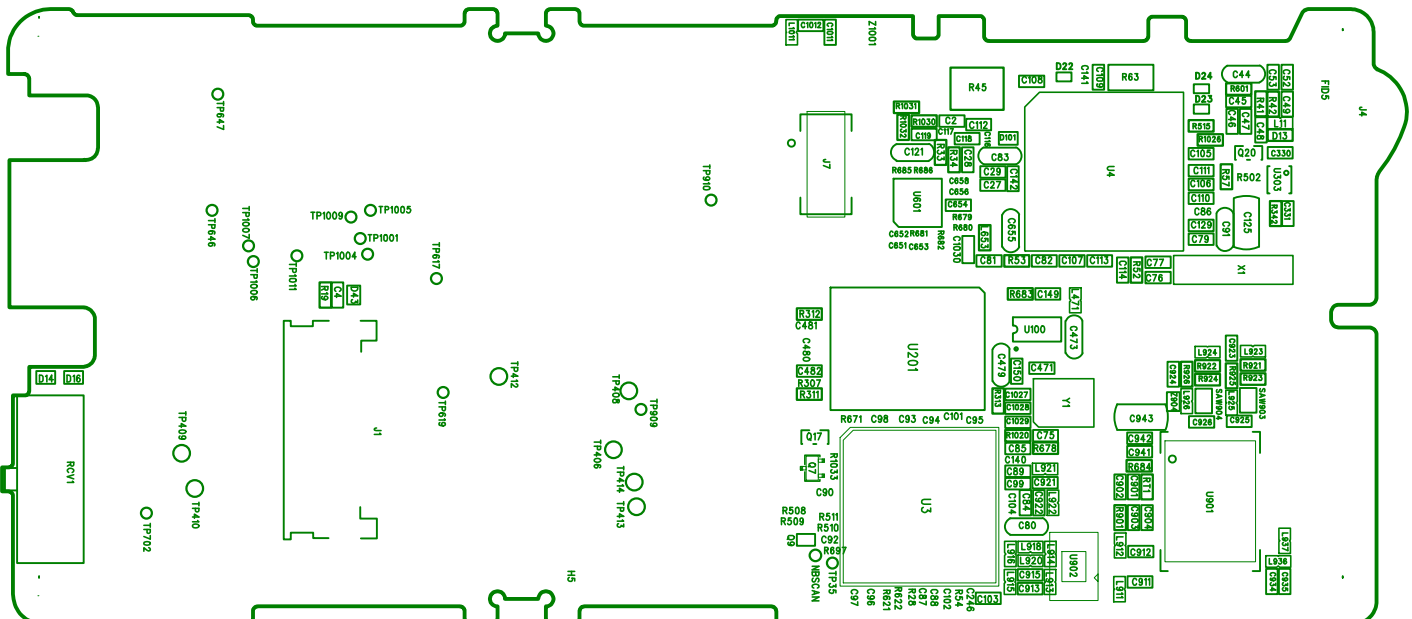
Sony Ericsson

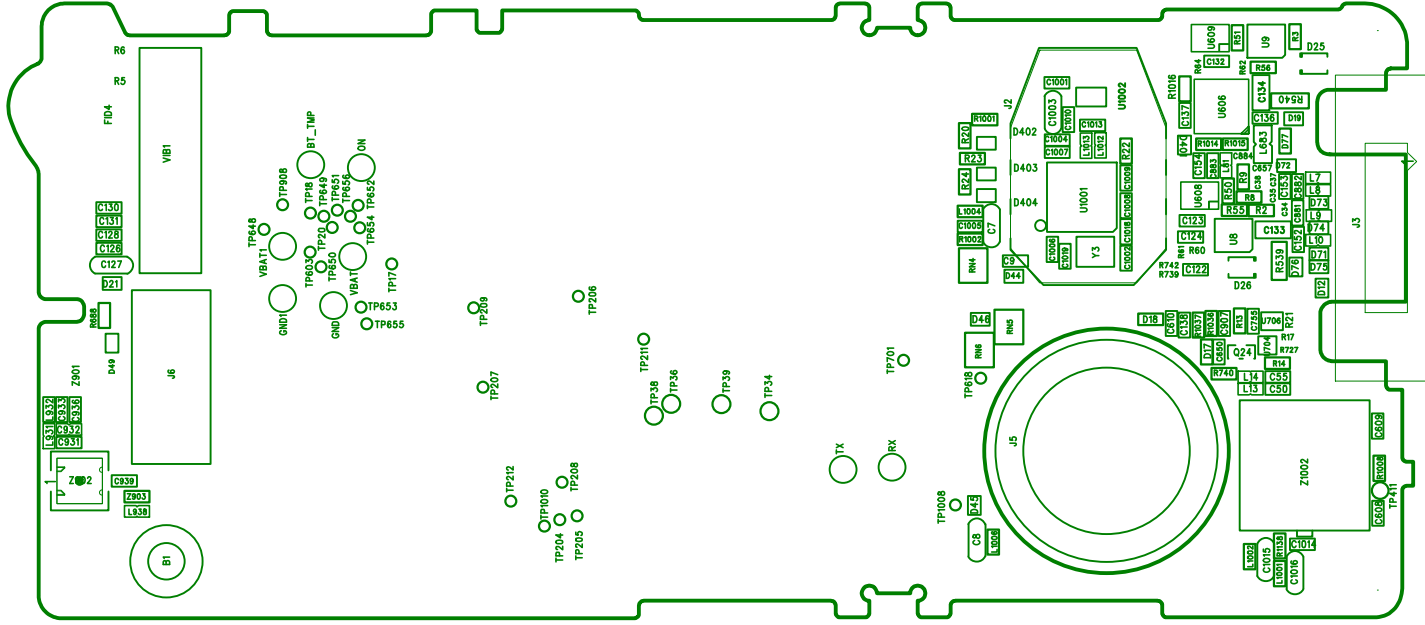
*Schematics, Electrical*

---

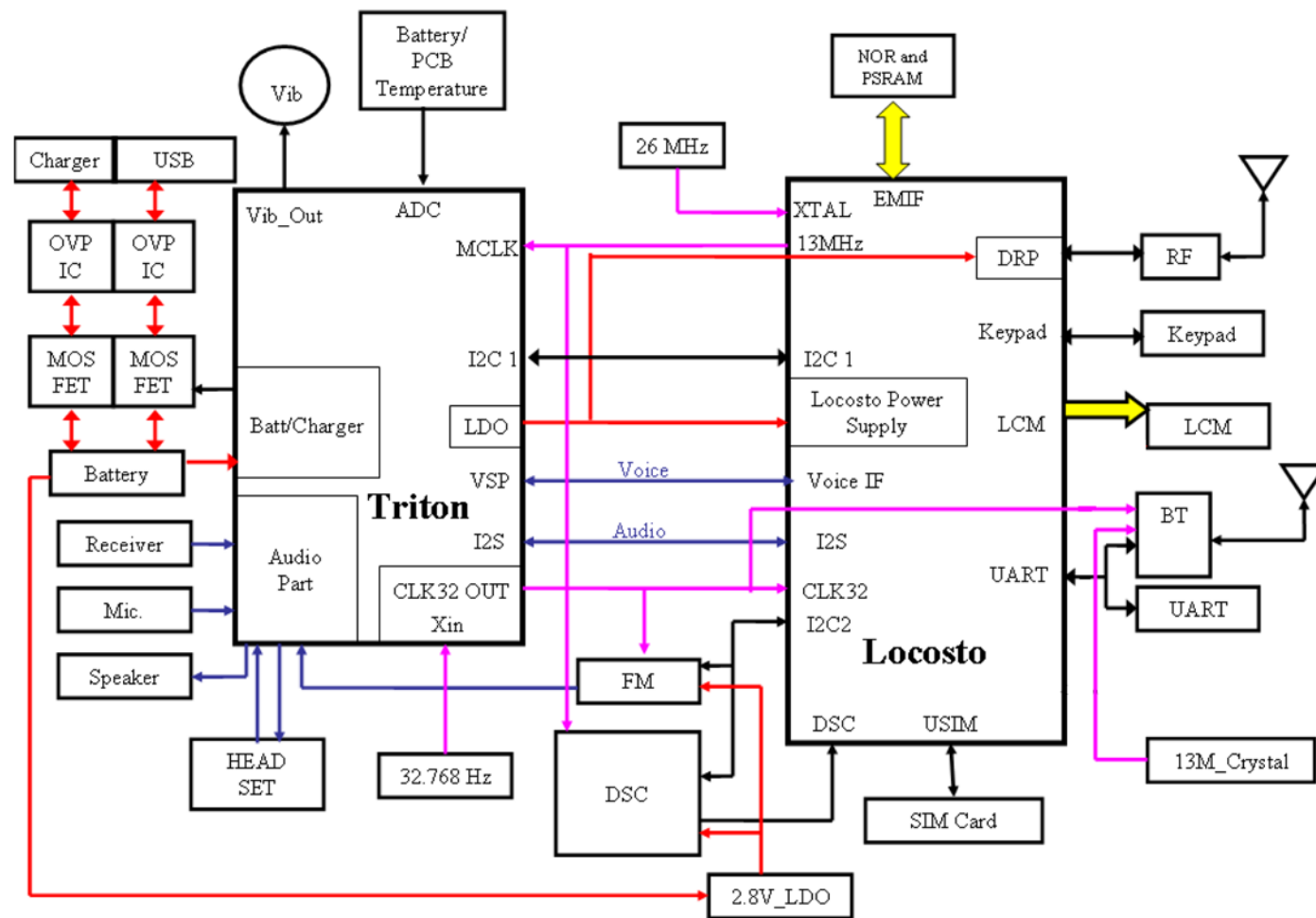
# **Schematics, Electrical**

Applicable for K330





# K330 BLOCK DIAGRAM



# LOCOSTO



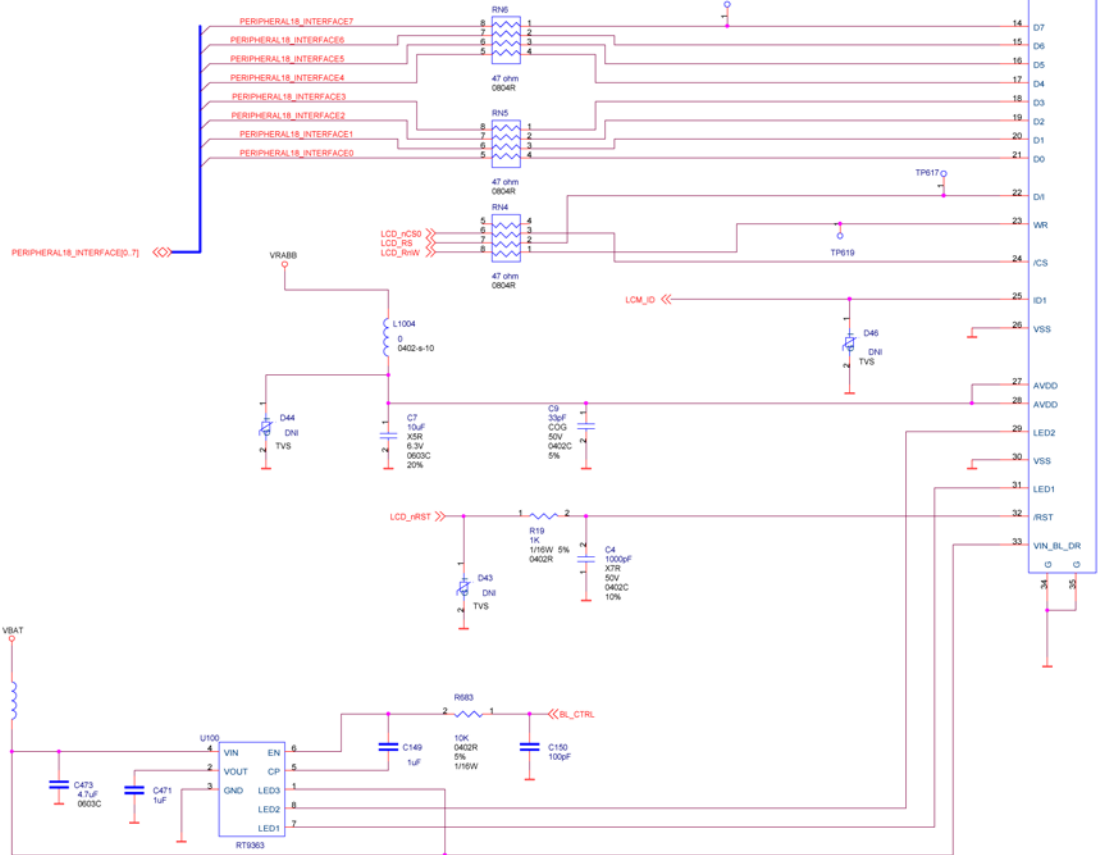
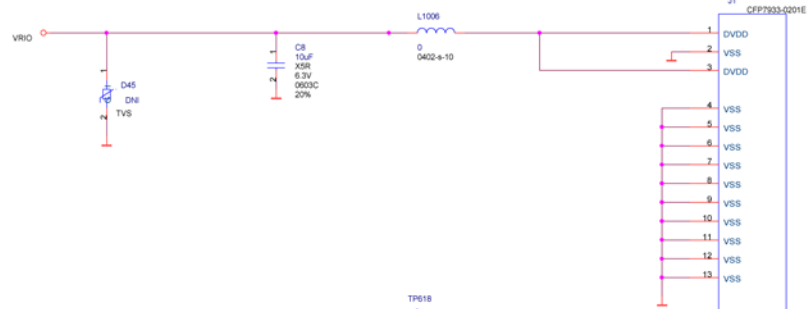
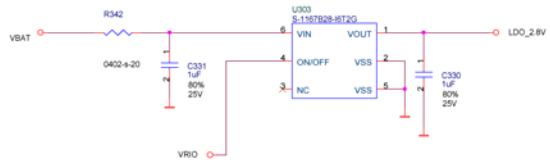
## Locosto Power Supply

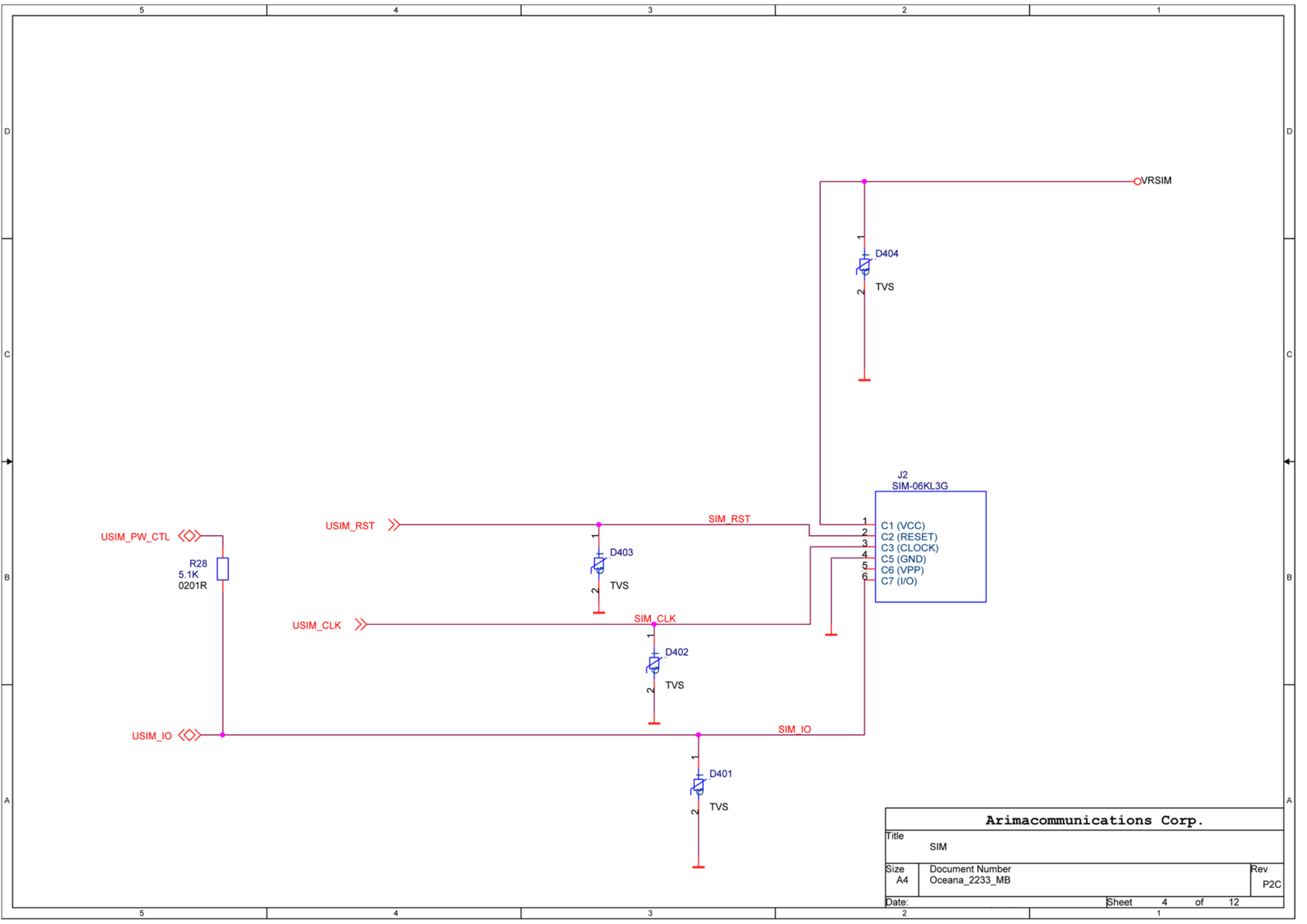
## DRP Power Supply

## Triton TWL3031

Power Voltage Reg. Output:			
Domain	Voltage (V)	Current (mA)	
GND_PWR1	2.8	80	
GND_PWR2	2.8	20	
GND_PWR3	1.8	20	
GND_PWR4	3.3	15	
GND_PWR5	1.8	20	
GND_PWR6	1.8/2.85	15	
GND_PWR7	1.8/2.85	100	
GND_PWR8	1.8	200	
GND_PWR9	1.8	200	
GND_PWR10	1.8/2.85	100	
GND_PWR11	1.8/2.85	100	
GND_PWR12	1.8/2.85	100	
GND_PWR13	1.8/2.85	100	
GND_PWR14	1.8/2.85	100	
GND_PWR15	1.8/2.85	100	
GND_PWR16	1.8/2.85	100	
GND_PWR17	1.8/2.85	100	
GND_PWR18	1.8/2.85	100	
GND_PWR19	1.8/2.85	100	
GND_PWR20	1.8/2.85	100	
GND_PWR21	1.8/2.85	100	
GND_PWR22	1.8/2.85	100	
GND_PWR23	1.8/2.85	100	
GND_PWR24	1.8/2.85	100	
GND_PWR25	1.8/2.85	100	
GND_PWR26	1.8/2.85	100	
GND_PWR27	1.8/2.85	100	
GND_PWR28	1.8/2.85	100	
GND_PWR29	1.8/2.85	100	
GND_PWR30	1.8/2.85	100	
GND_PWR31	1.8/2.85	100	
GND_PWR32	1.8/2.85	100	
GND_PWR33	1.8/2.85	100	
GND_PWR34	1.8/2.85	100	
GND_PWR35	1.8/2.85	100	
GND_PWR36	1.8/2.85	100	
GND_PWR37	1.8/2.85	100	
GND_PWR38	1.8/2.85	100	
GND_PWR39	1.8/2.85	100	
GND_PWR40	1.8/2.85	100	
GND_PWR41	1.8/2.85	100	
GND_PWR42	1.8/2.85	100	
GND_PWR43	1.8/2.85	100	
GND_PWR44	1.8/2.85	100	
GND_PWR45	1.8/2.85	100	
GND_PWR46	1.8/2.85	100	
GND_PWR47	1.8/2.85	100	
GND_PWR48	1.8/2.85	100	
GND_PWR49	1.8/2.85	100	
GND_PWR50	1.8/2.85	100	
GND_PWR51	1.8/2.85	100	
GND_PWR52	1.8/2.85	100	
GND_PWR53	1.8/2.85	100	
GND_PWR54	1.8/2.85	100	
GND_PWR55	1.8/2.85	100	
GND_PWR56	1.8/2.85	100	
GND_PWR57	1.8/2.85	100	
GND_PWR58	1.8/2.85	100	
GND_PWR59	1.8/2.85	100	
GND_PWR60	1.8/2.85	100	
GND_PWR61	1.8/2.85	100	
GND_PWR62	1.8/2.85	100	
GND_PWR63	1.8/2.85	100	
GND_PWR64	1.8/2.85	100	
GND_PWR65	1.8/2.85	100	
GND_PWR66	1.8/2.85	100	
GND_PWR67	1.8/2.85	100	
GND_PWR68	1.8/2.85	100	
GND_PWR69	1.8/2.85	100	
GND_PWR70	1.8/2.85	100	
GND_PWR71	1.8/2.85	100	
GND_PWR72	1.8/2.85	100	
GND_PWR73	1.8/2.85	100	
GND_PWR74	1.8/2.85	100	
GND_PWR75	1.8/2.85	100	
GND_PWR76	1.8/2.85	100	
GND_PWR77	1.8/2.85	100	
GND_PWR78	1.8/2.85	100	
GND_PWR79	1.8/2.85	100	
GND_PWR80	1.8/2.85	100	
GND_PWR81	1.8/2.85	100	
GND_PWR82	1.8/2.85	100	
GND_PWR83	1.8/2.85	100	
GND_PWR84	1.8/2.85	100	
GND_PWR85	1.8/2.85	100	
GND_PWR86	1.8/2.85	100	
GND_PWR87	1.8/2.85	100	
GND_PWR88	1.8/2.85	100	
GND_PWR89	1.8/2.85	100	
GND_PWR90	1.8/2.85	100	
GND_PWR91	1.8/2.85	100	
GND_PWR92	1.8/2.85	100	
GND_PWR93	1.8/2.85	100	
GND_PWR94	1.8/2.85	100	
GND_PWR95	1.8/2.85	100	
GND_PWR96	1.8/2.85	100	
GND_PWR97	1.8/2.85	100	
GND_PWR98	1.8/2.85	100	
GND_PWR99	1.8/2.85	100	
GND_PWR100	1.8/2.85	100	







USIM\_PW\_CTL

R28  
5.1K  
0201R

USIM\_IO

USIM\_RST

USIM\_CLK

D403  
TVS

SIM\_CLK

D402  
TVS

D401  
TVS

SIM\_RST

SIM\_CLK

SIM\_IO

D404  
TVS

J2  
SIM-06KL3G

1 C1 (VCC)  
2 C2 (RESET)  
3 C3 (CLOCK)  
4 C5 (GND)  
5 C6 (VPP)  
6 C7 (I/O)

VRSIM

**Arimacommunications Corp.**

Title

SIM

Size

A4

Document Number

Oceana\_2233\_MB

Rev

P2C

Date:

Sheet

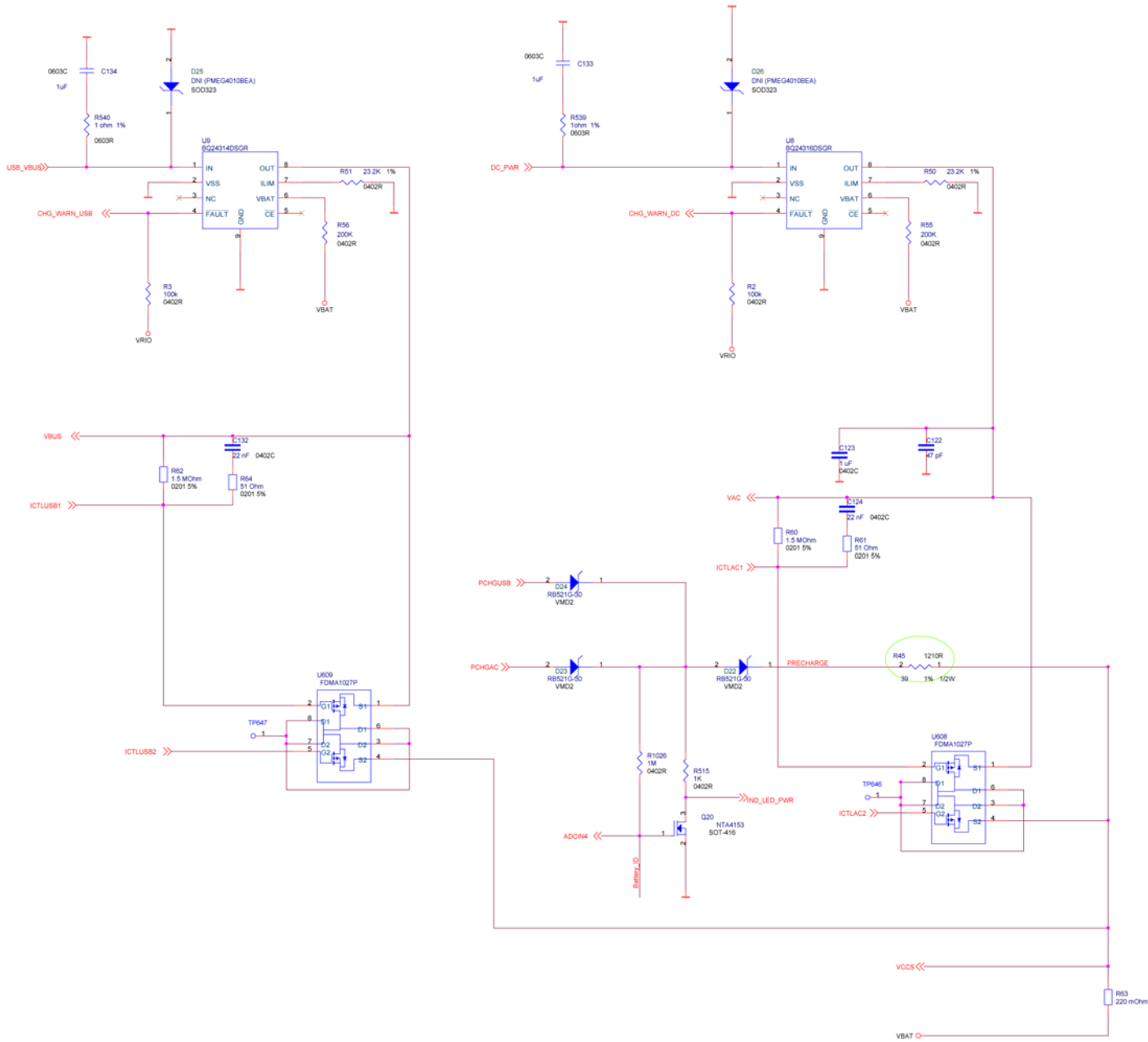
4

of

12



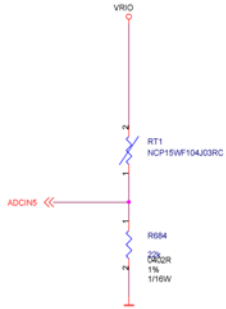
CHARGING



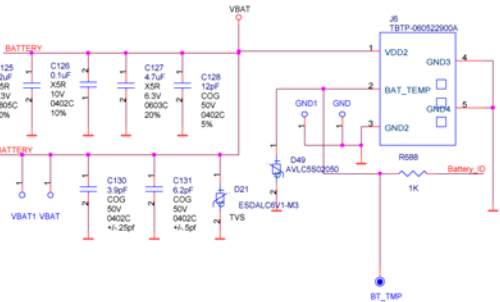
VIBRATOR



NTC

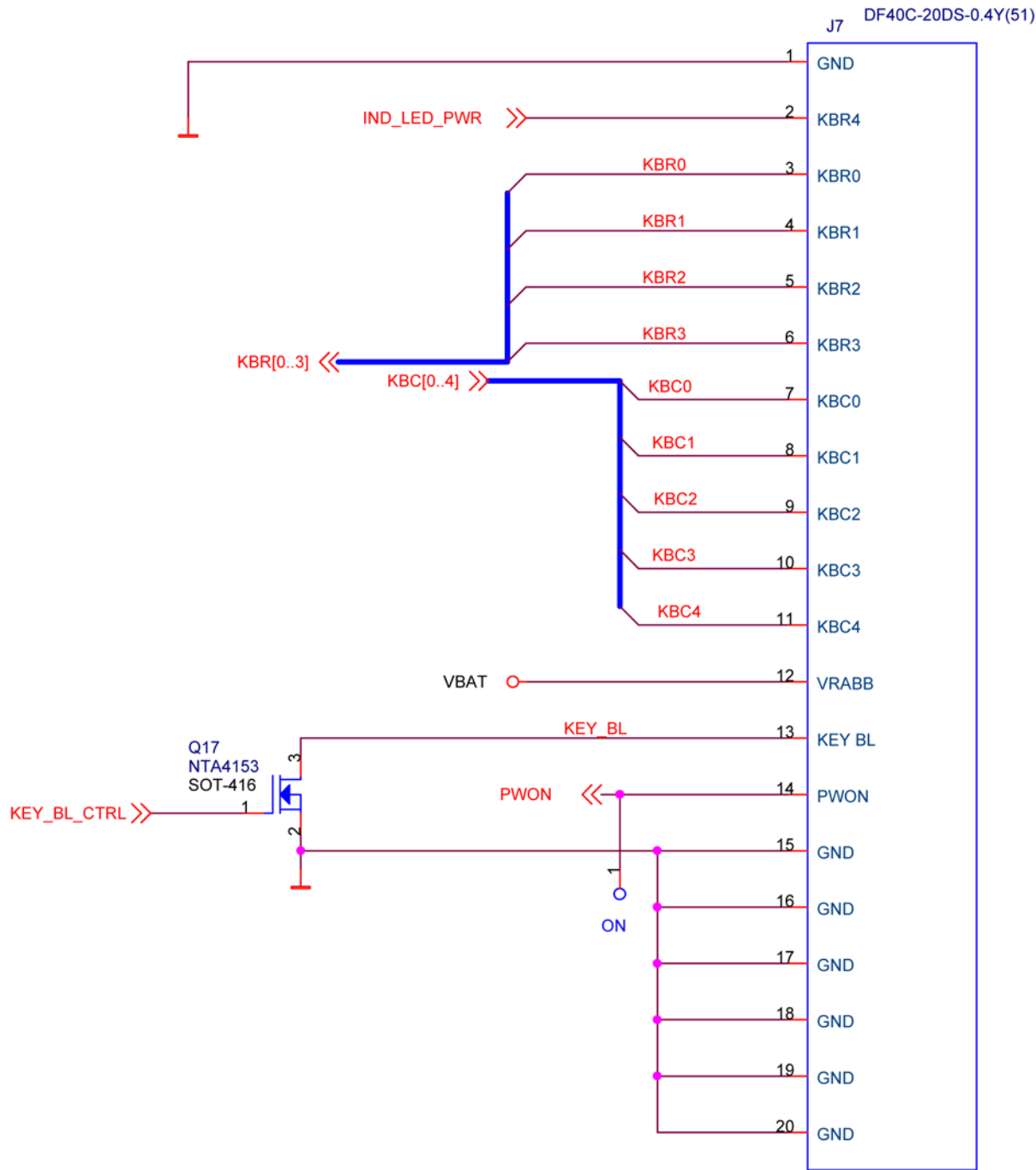


BATTERY CONNECTOR

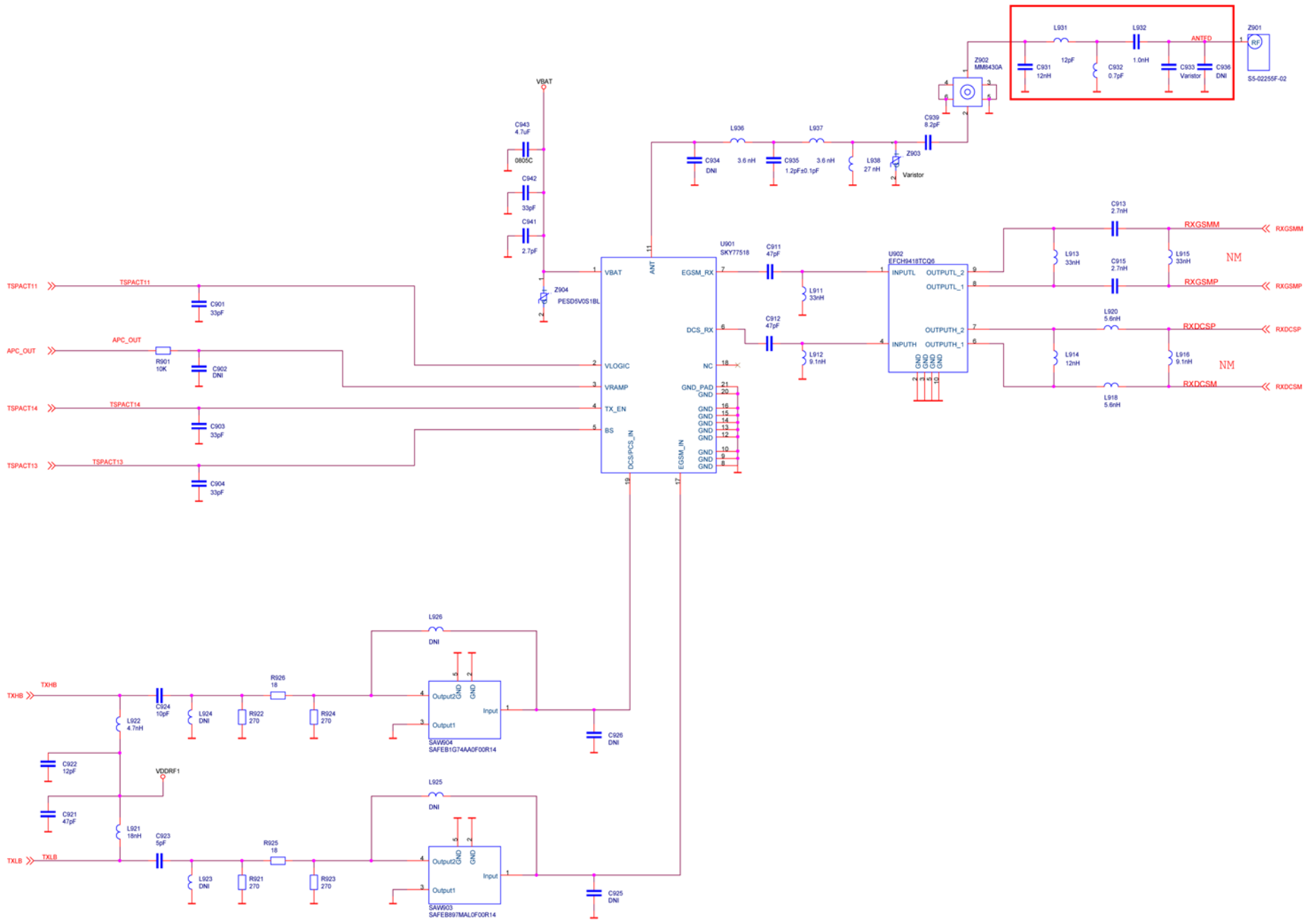


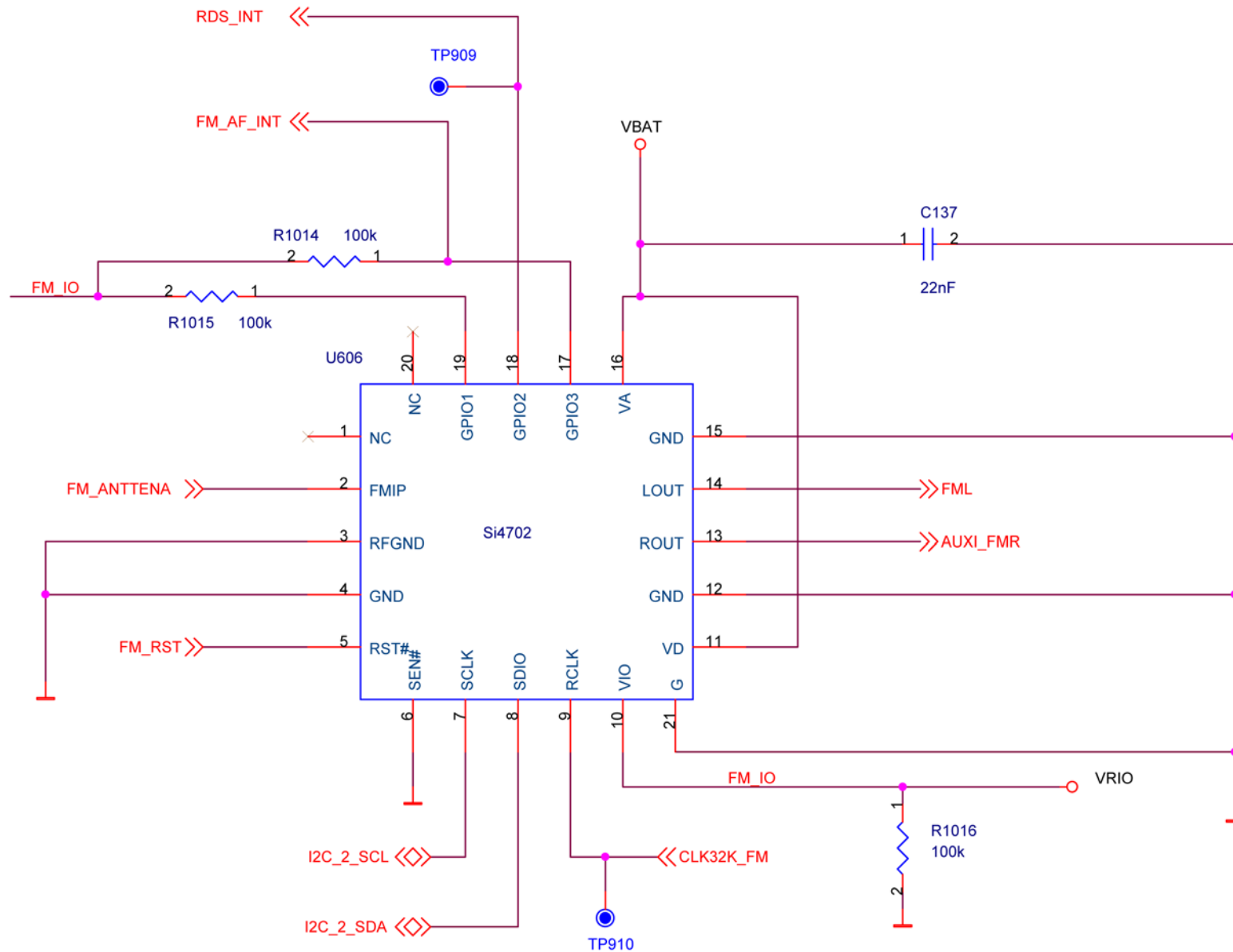






Arimacommunications Corp.		
Title KEYPAD&BACKLIGHT		
Size A	Document Number Oceana_2233_MB	Rev P2C
Date:	Sheet 8 of 12	





**Arimacommunications Corp.**

Title

FM RADIO

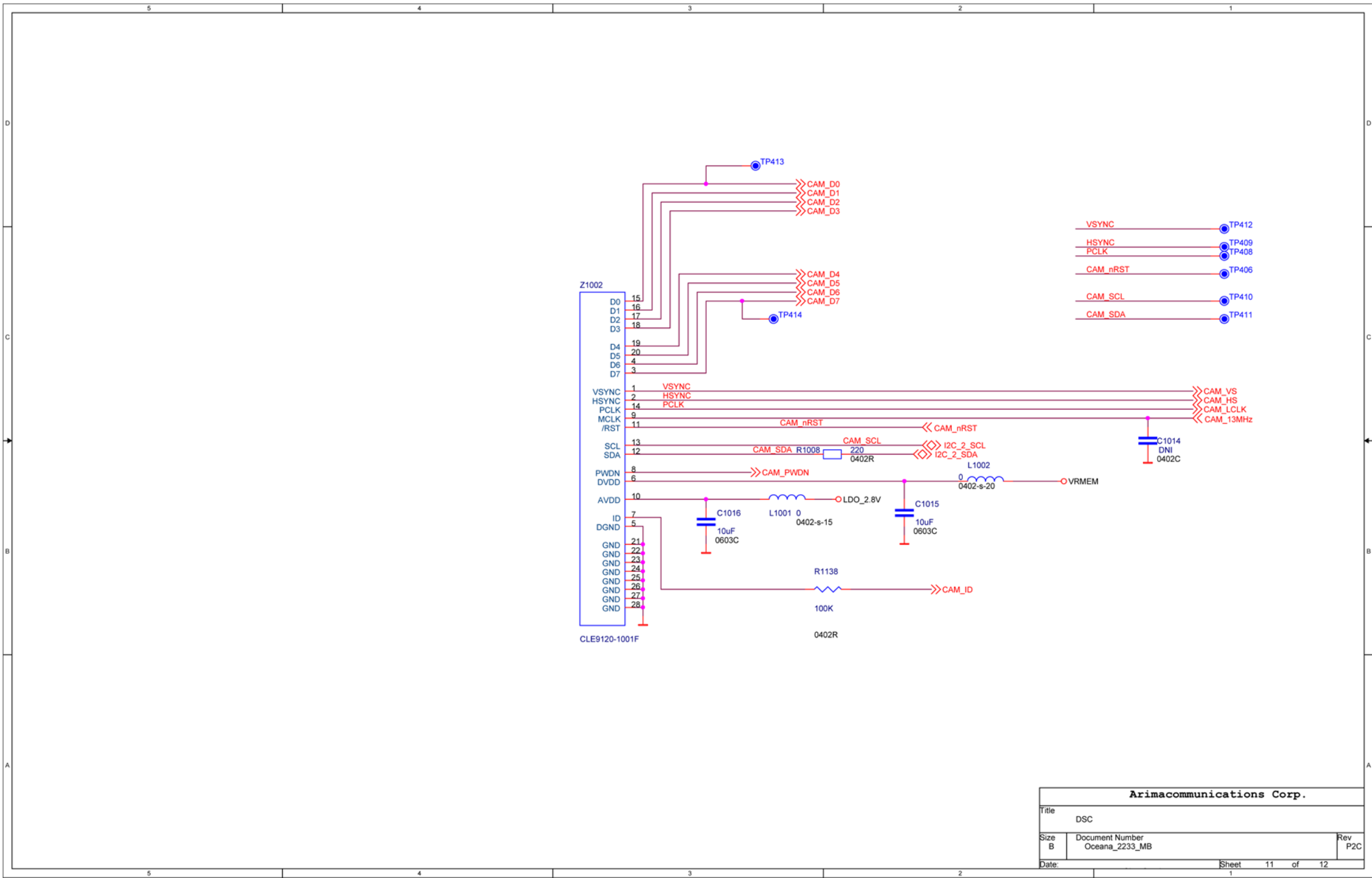
Size  
A

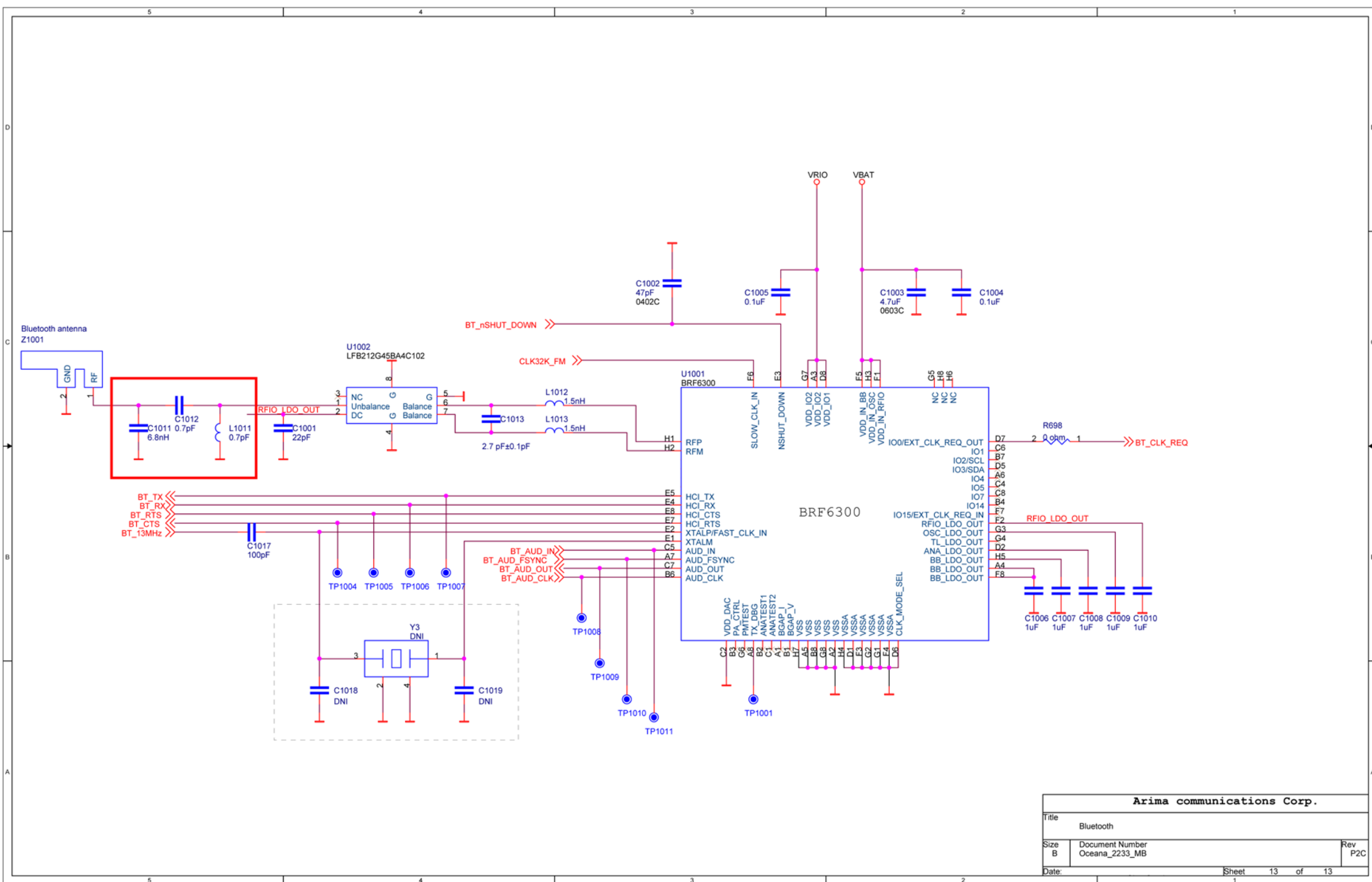
Document Number  
Oceana\_2233\_MB

Rev  
P2C

Date:

Sheet 10 of 12







## Revision History

Rev.	Date	Changes / Comments
1	2009-12-10	1 <sup>st</sup> release