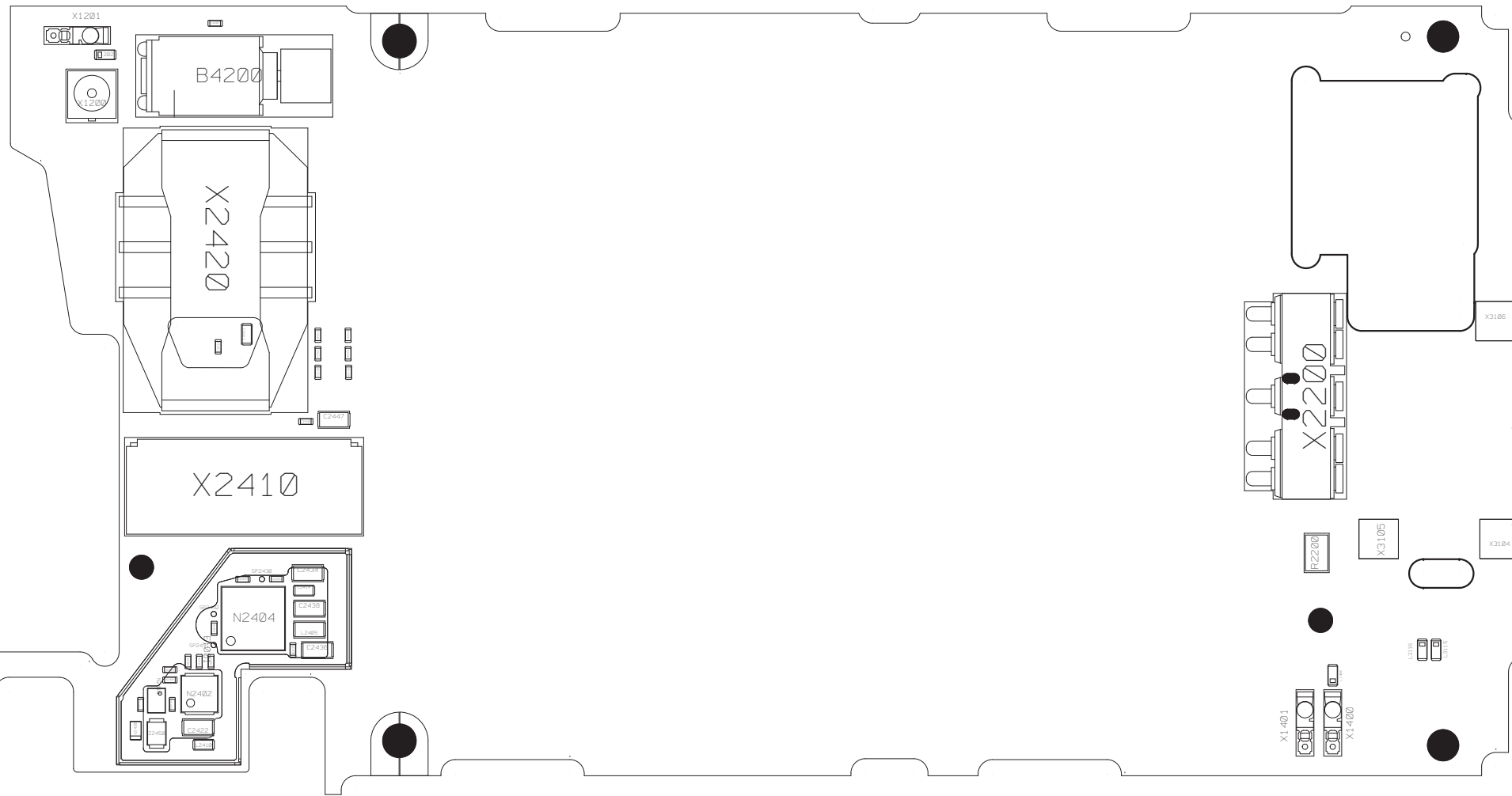


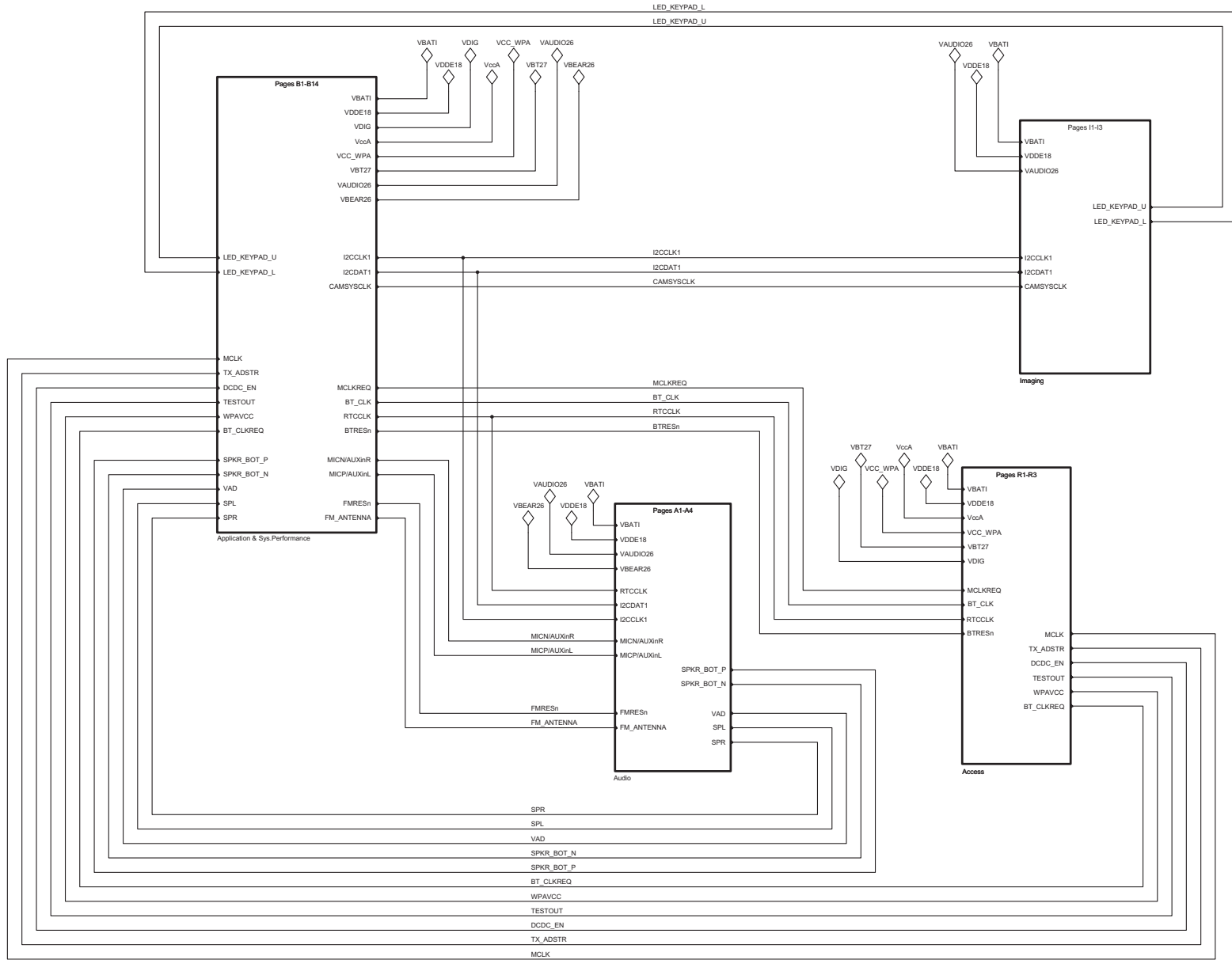
Schematics, Electrical

Applicable for W595

CONFIDENTIAL

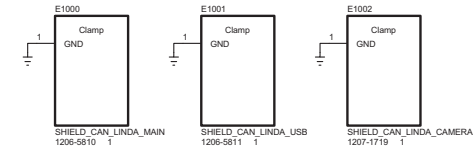


Sony Ericsson		Prepared (Also Subject Responsible If Other)	
Drawing Rules ISO		Doc Responsible/Approved	
Tolerance		Product Name	
Reference		Document No.	
Scale	Units mm	Size A3	Sheet



Access side GPIO mapping		
Port	Usage	Page
AccGPIO00	USB_HSTP	B13
AccGPIO01	USB_HSDIR	B13
AccGPIO02	CTMS	B13
AccGPIO03	CFMS_AID	B13
AccGPIO04	USB_HSINCLK	B13
AccGPIO05	USB_HSNXT	B13
AccGPIO06	USB_HSDATA4	B13
AccGPIO07	USB_HSDATA5	B13
AccGPIO08	USB_HSDATA6	B13
AccGPIO09	USB_HSDATA7	B13
AccGPIO10	not used	T01
AccGPIO11	VBUS_OVP_FLAG	B13
AccGPIO12	BT_SPI_INT	R03
AccGPIO13	not used	T01
AccGPIO14	not used	T01
AccGPIO15	not used	T01
AccGPIO16	USB_HSCHIP_SEL	B13
AccGPIO17	not used	T01
AccGPIO18	USB_HSDATA3	B13
AccGPIO19	BT_SPI_CSn	R03
AccGPIO20	BT_SPI_Di	R03
AccGPIO21	BT_SPI_DO	R03
AccGPIO22	BT_SPI_CLK	R03
AccGPIO23	not used	T01

Application side GPIO mapping		
Port	Usage	Page
AppGPIO00	FM_INT	A04
AppGPIO01	APP_LOG	B13
AppGPIO02	SLIDE_SENSE	B11
AppGPIO03	not used	T01
AppGPIO04	not used	T01
AppGPIO05	AMPCTRL	A02
AppGPIO06	not used	T01
AppGPIO07	not used	T01
AppGPIO08	not used	T01
AppGPIO09	not used	T01
AppGPIO10	CAM_LDO_EN	I03
AppGPIO11	not used	T01
AppGPIO12	MSDETECT	B12
AppGPIO13	not used	T01
AppGPIO14	CAM_STANDBY	I03



Confidential

SCHEMA
DIAGRAM

Sony Ericsson

Toleranser - Tolerances
Top Schematic
Tillhör - Made for
Top

Ritningsregler - Drawing rules

Uppgord (given faktansvaring om annan - Prepared (also sub)test responsible (if other)

Dokumentansvarig/Godkänd - Document responsible/Approved

Produktbenämning - Product name
W595

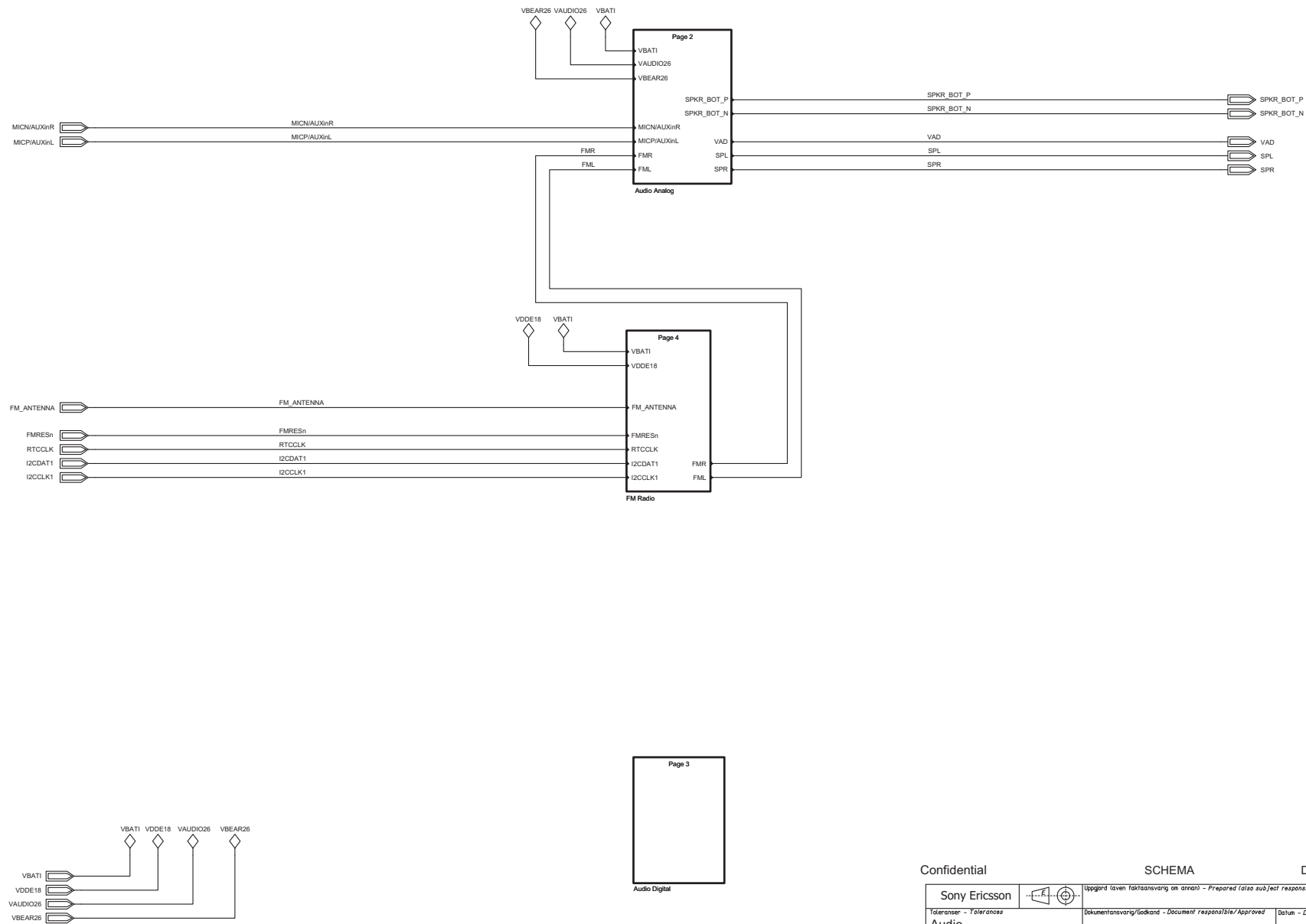
Dokumentnr - Document nr
1207-1486


Datum - Date

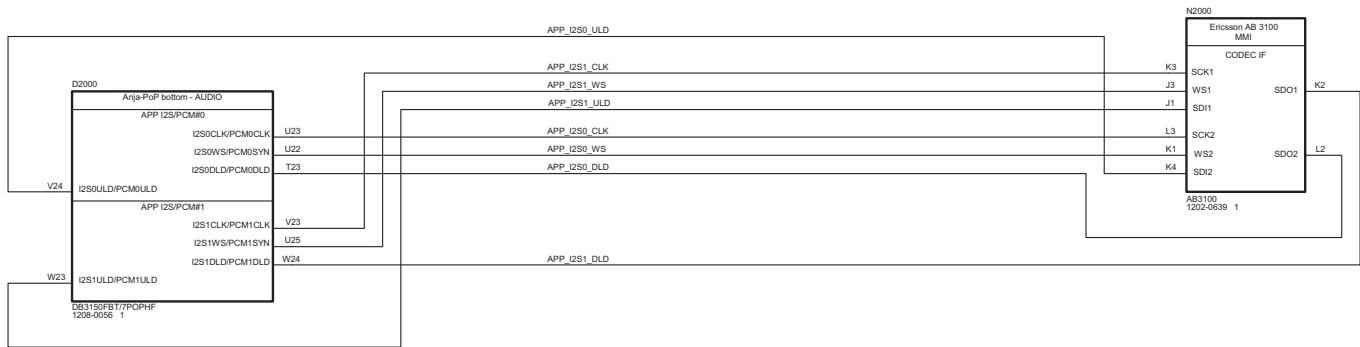
Rev

Blad - Sheet
1 of 1

LZF 030 102/F PB



Confidential		SCHEMA		DIAGRAM	
Sony Ericsson		 Uppgjord (given färdigställning av annan) - Prepared (also subject responsible if other)			
Toleranser - Tolerances		Dokumentansvarig/godkänd - Document responsible/Approved		Datum - Date	Rev
Audio		W595			8
Tillhör - Made for		Produktbenämning - Product name		H	
Audio Top		W595			
Ritningsregler - Drawing rules		Dokumentnr - Document nr		Blad - Sheet	
AcePlus		1207-1486		A 1 of 4	

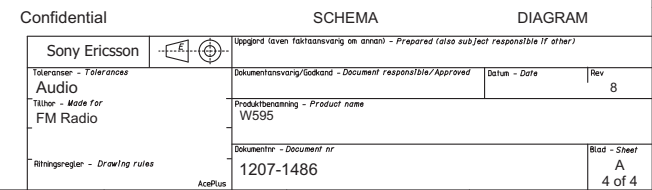


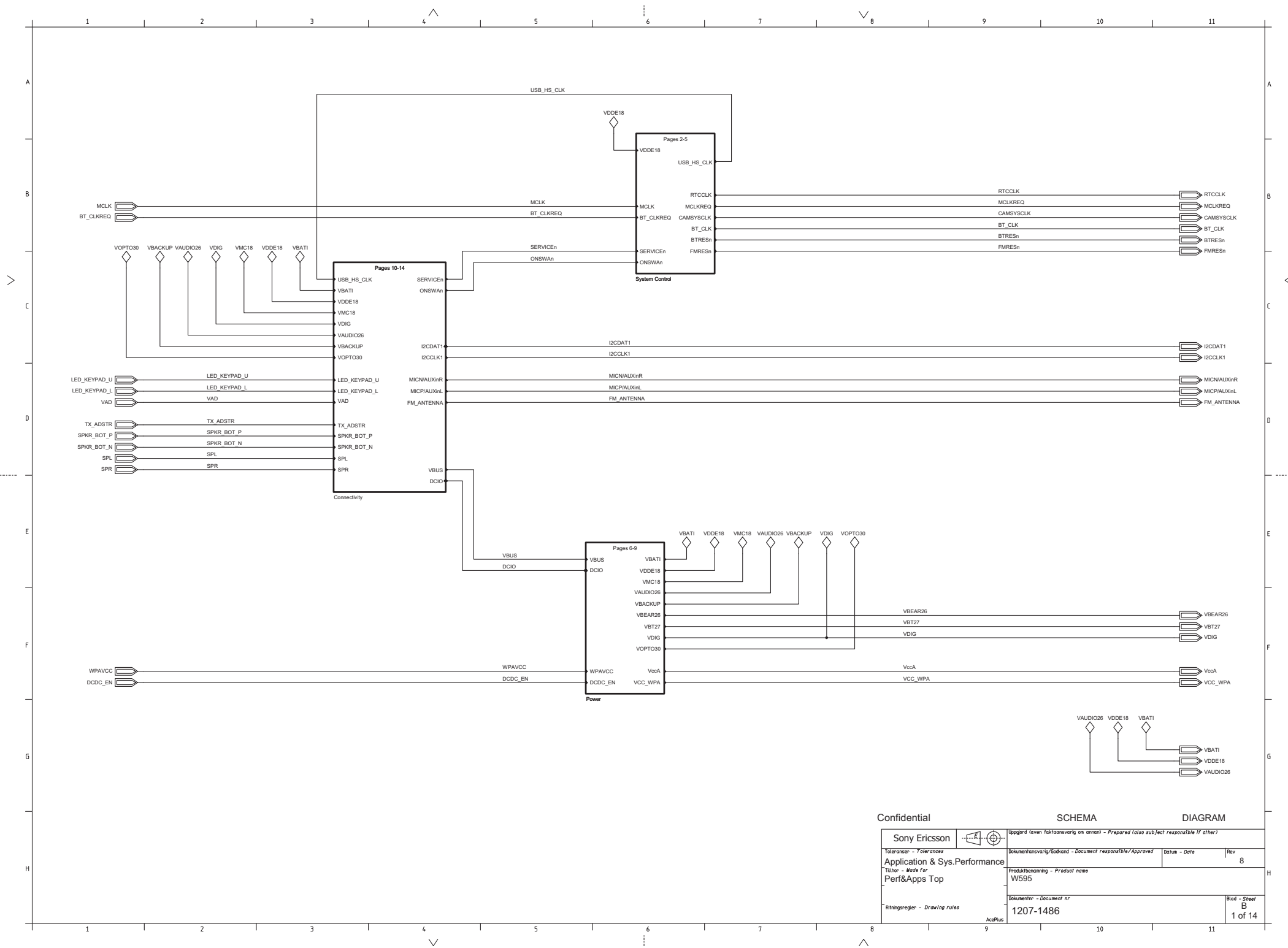
Confidential

SCHEMA

DIAGRAM

Sony Ericsson		Uppgärd (även färdigställs av annan) - Prepared (also subject responsible if other)	
Toleranser - Tolerances		Dokumentansvarig/godkänd - Document responsible/Approved	
Audio		Datum - Date	
Titel - Made for		Rev	
Audio Digital		8	
Ritningsregler - Drawing rules		Produktbenämning - Product name	
		W595	
		Dokumentnr - Document nr	
		1207-1486	
		Blad - Sheet	
		A	
		3 of 4	





Confidential

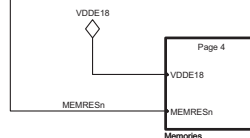
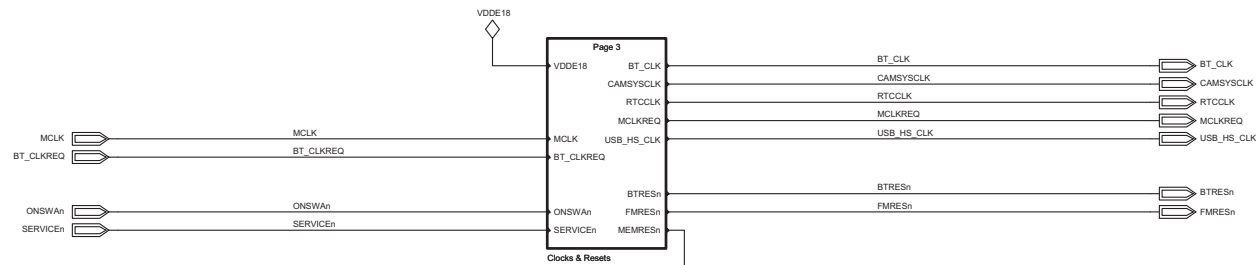
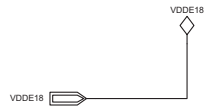
SCHEMA


DIAGRAM

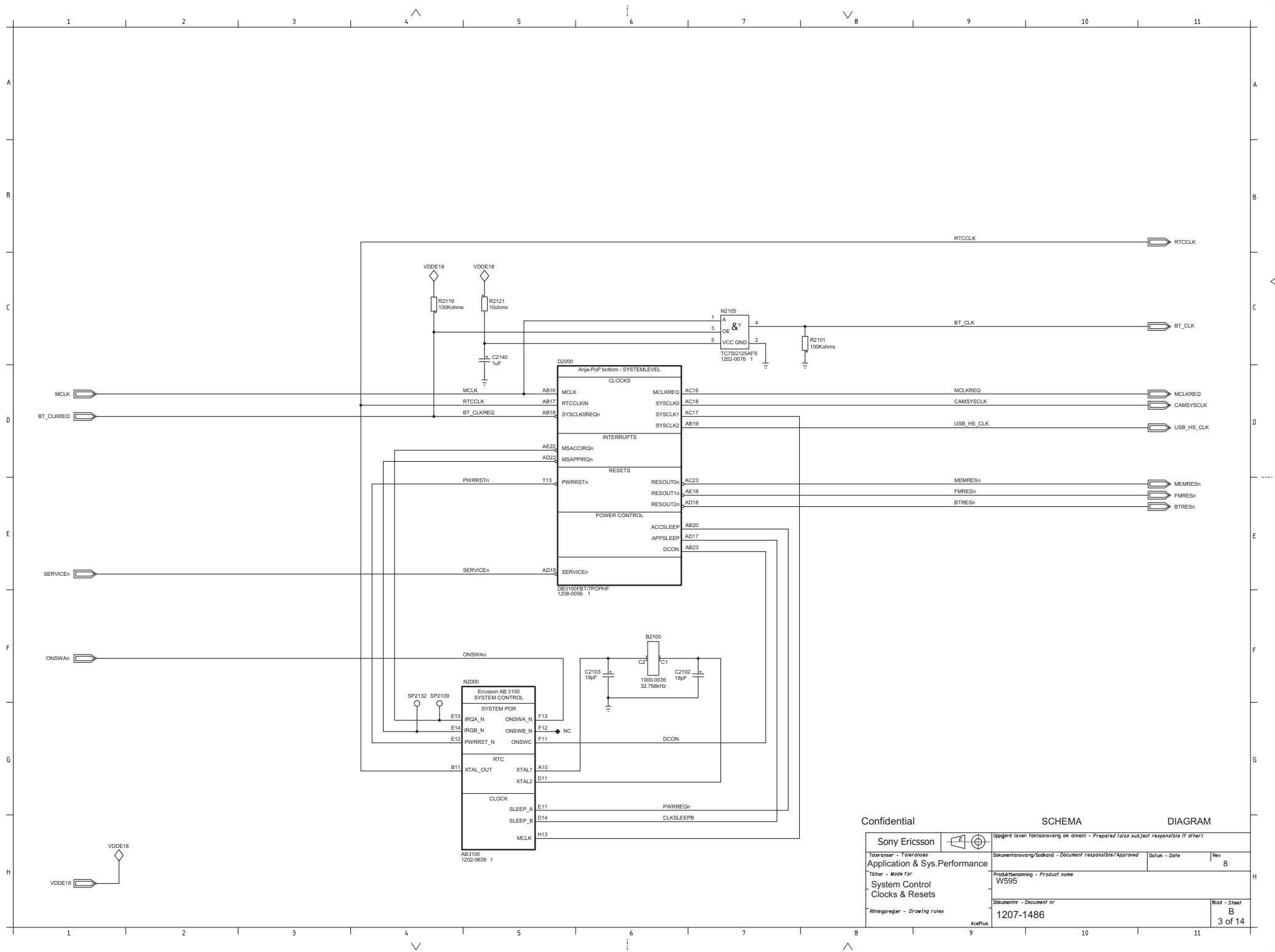
Sony Ericsson		Uppgärd (given färdigställning och annan) - Prepared (also subject responsible if other)	
Toleranser - Tolerances	Application & Sys.Performance	Dokumentansvarig/ansvarig - Document responsible/Approved	Datum - Date
Tiiter - Made for	Perf&Apps Top	Produktbenämning - Product name	Rev 8
W595		Dokumentnr - Document nr	1207-1486
Ritningsregler - Drawing rules			Blad - Sheet B 1 of 14

AcePlus

LZF 030 102/F PB



Confidential		SCHEMA		DIAGRAM	
Sony Ericsson		 Uppgärd (given faktasvaring om annan) - Prepared (also subject responsible if other)			
Toleranser - Tolerances		Dokumentansvarig/Godkänd - Document responsible/Approved		Datum - Date	Rev 8
Application & Sys.Performance		Produktnamn - Product name			
Titel - Made for		W595			
System Top		Dokumentnr - Document nr			
Ritningsregler - Drawing rules		1207-1486			Blad - Sheet B 2 of 14
		AcePlus			

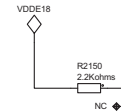
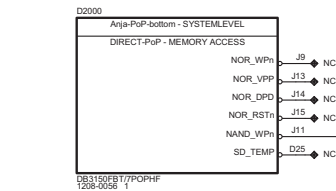


Confidential

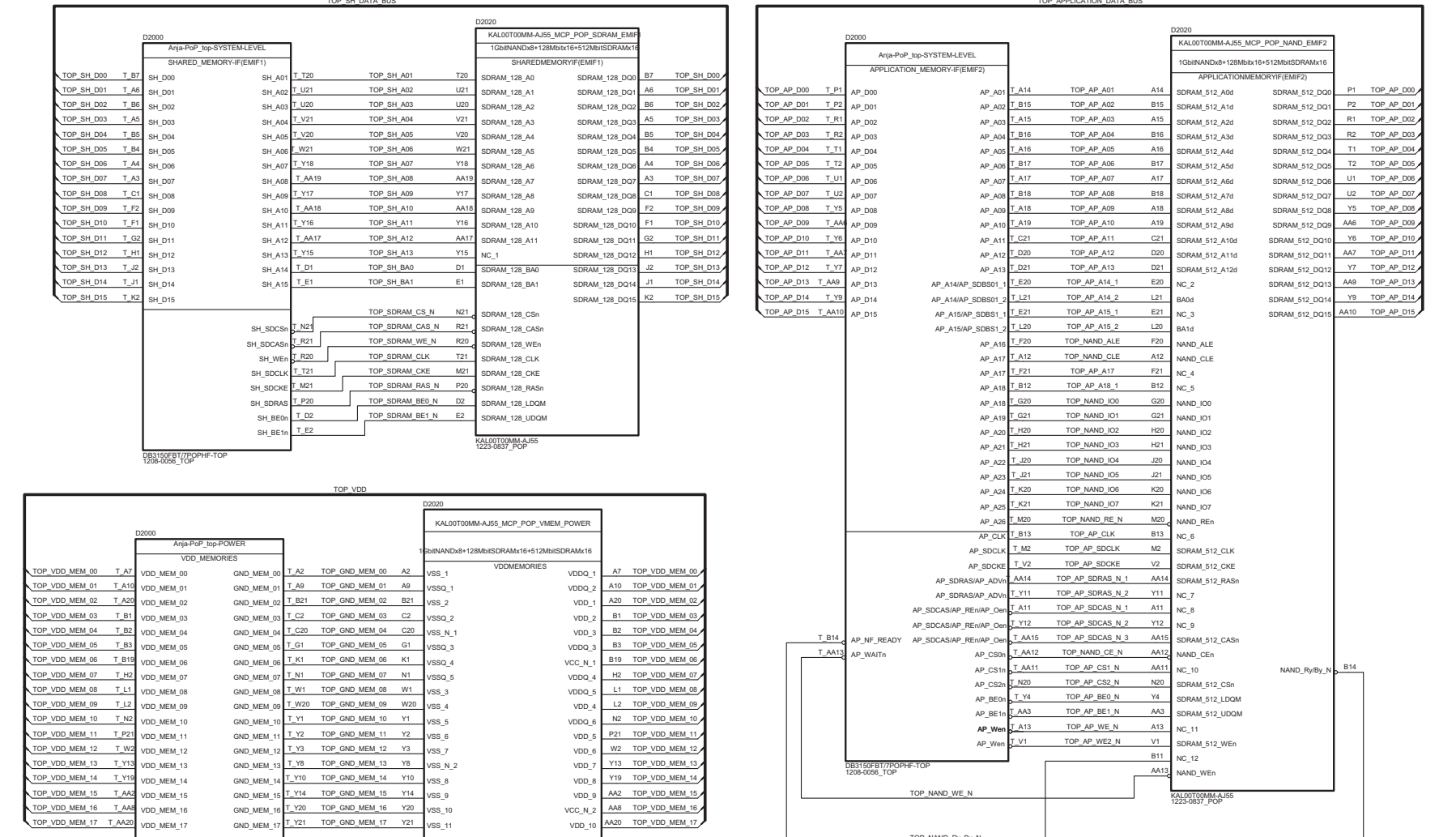
SCHEMA

DIAGRAM


Sony Ericsson		Uppgärd (given färdigställning och annan) - Prepared (also subject responsible if other)	
Toleranser - Tolerances		Datum - Date	
Application & Sys.Performance		Rev 8	
Titel - Made for		Produktnamn - Product name	
System Control		W595	
Clocks & Resets		Blad - Sheet	
Ritningsregler - Drawing rules		3 of 14	
1207-1486		B	
AcePlus			



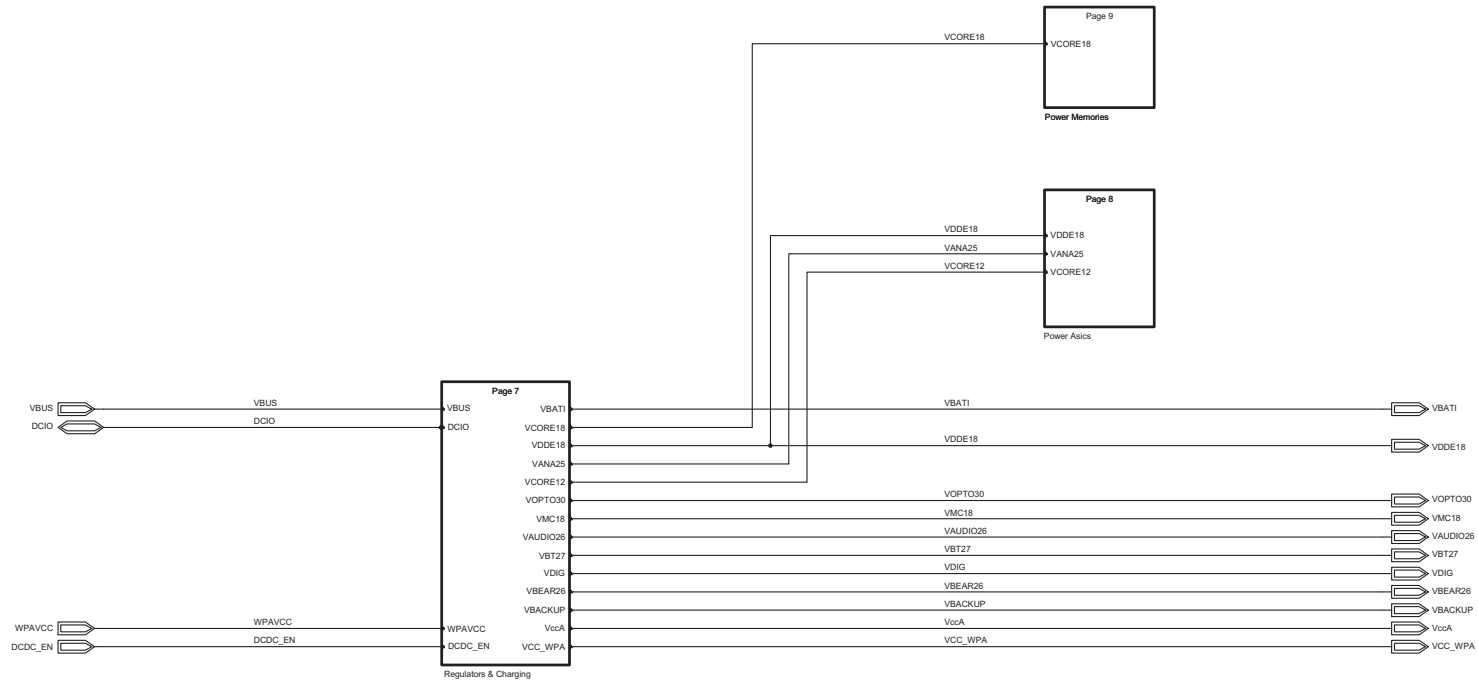
1 2 3 4 5 6 7 8 9 10 11



DIAGRAM

Sony Ericsson 		Uppgävt (given) faktasvarning om orsaken - Prepared (also subject) responsible if other		
Tilldelare - Tolordans Application & Sys.Performance		Dokumentansvarig/Godkänd - Document responsible/Approved	Datum - Date	Rev
Titlar - Made for System PoP IF		Produktbenämning - Product name W595		
Ritningsregler - Drawing rules		Dokumentnr - Document nr 1207-1486	Bild - She B	

LZF 030 102/F RB

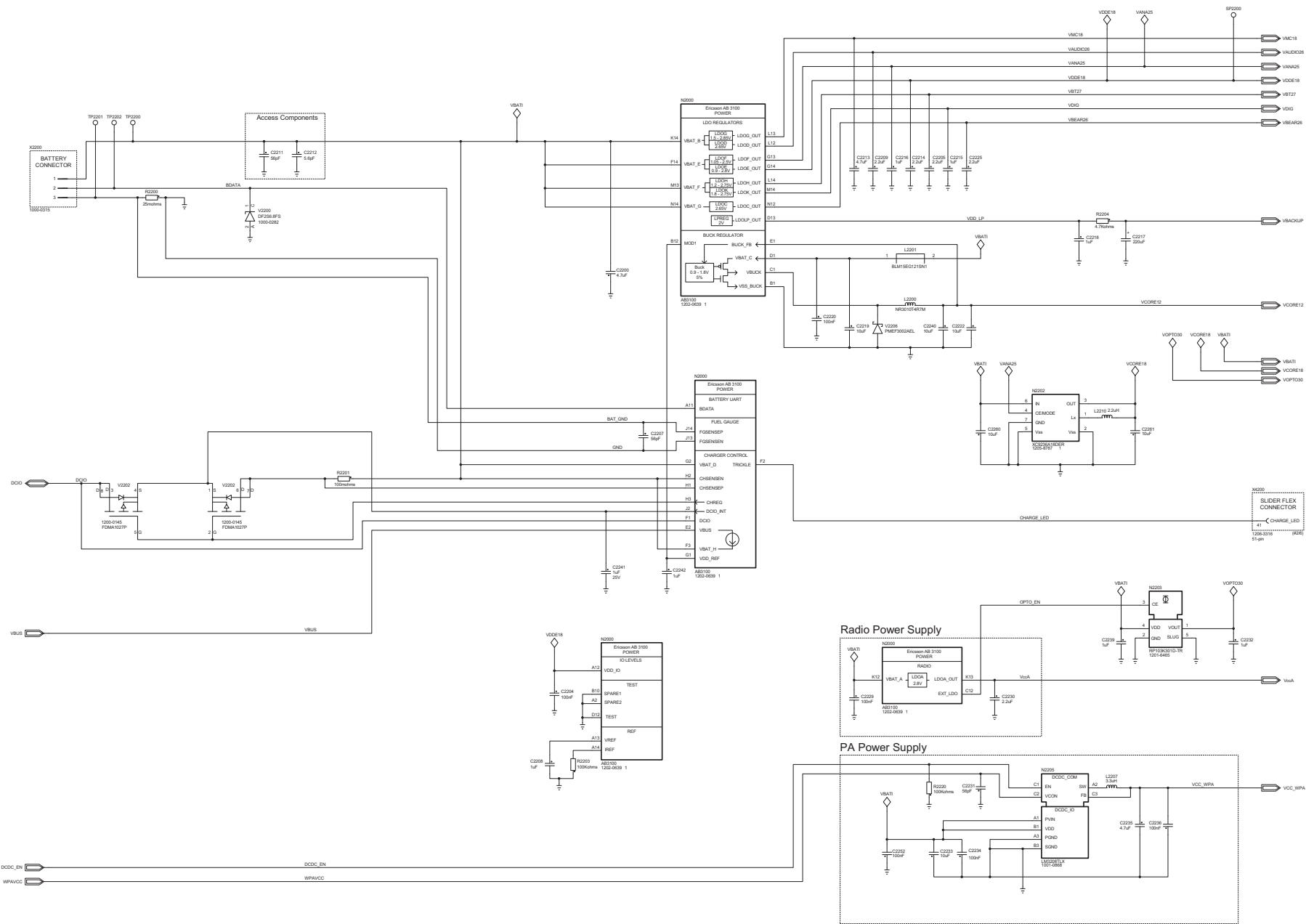


Confidential

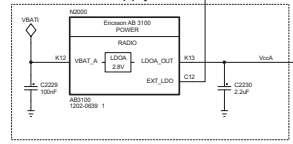
SCHEMA

DIAGRAM

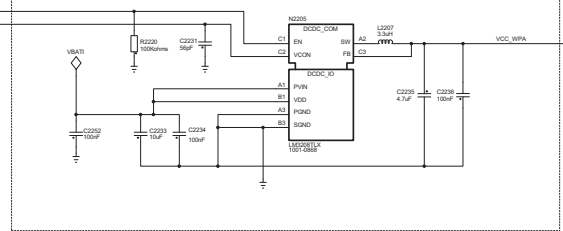
Sony Ericsson		Uppgärd (given faktansvaring om annan) - Prepared (also subject responsible if other)	
Toleranser - Tolerances		Dokumentansvarig/ansvarig - Document responsible/Approved	
Application & Sys.Performance		Datum - Date	
Titel - Made for		Rev	
Power Top		8	
Produktbenämning - Product name		W595	
Dokumentnr - Document nr		1207-1486	
Ritningsregler - Drawing rules		Blad - Sheet	
AcePlus		B	
		6 of 14	



Radio Power Supply

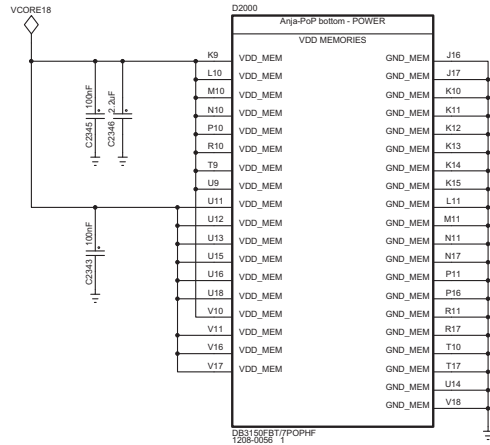


PA Power Supply



Confidential		KRETTSCHEMA		CIRCUIT DIAGRAM	
Sony Ericsson		Updated from 14/05/2009 to 15/05/2009 - Prepared data subject to approval		Rev	
Application & Sys.Performance		Preparation - Product name		8	
Power		W595			
Regulators & Charging		Document - Document nr		Rev - Sheet	
Biologer - Drawing rules		1207-1486		B 7 of 14	

LZF 030 102/F RB



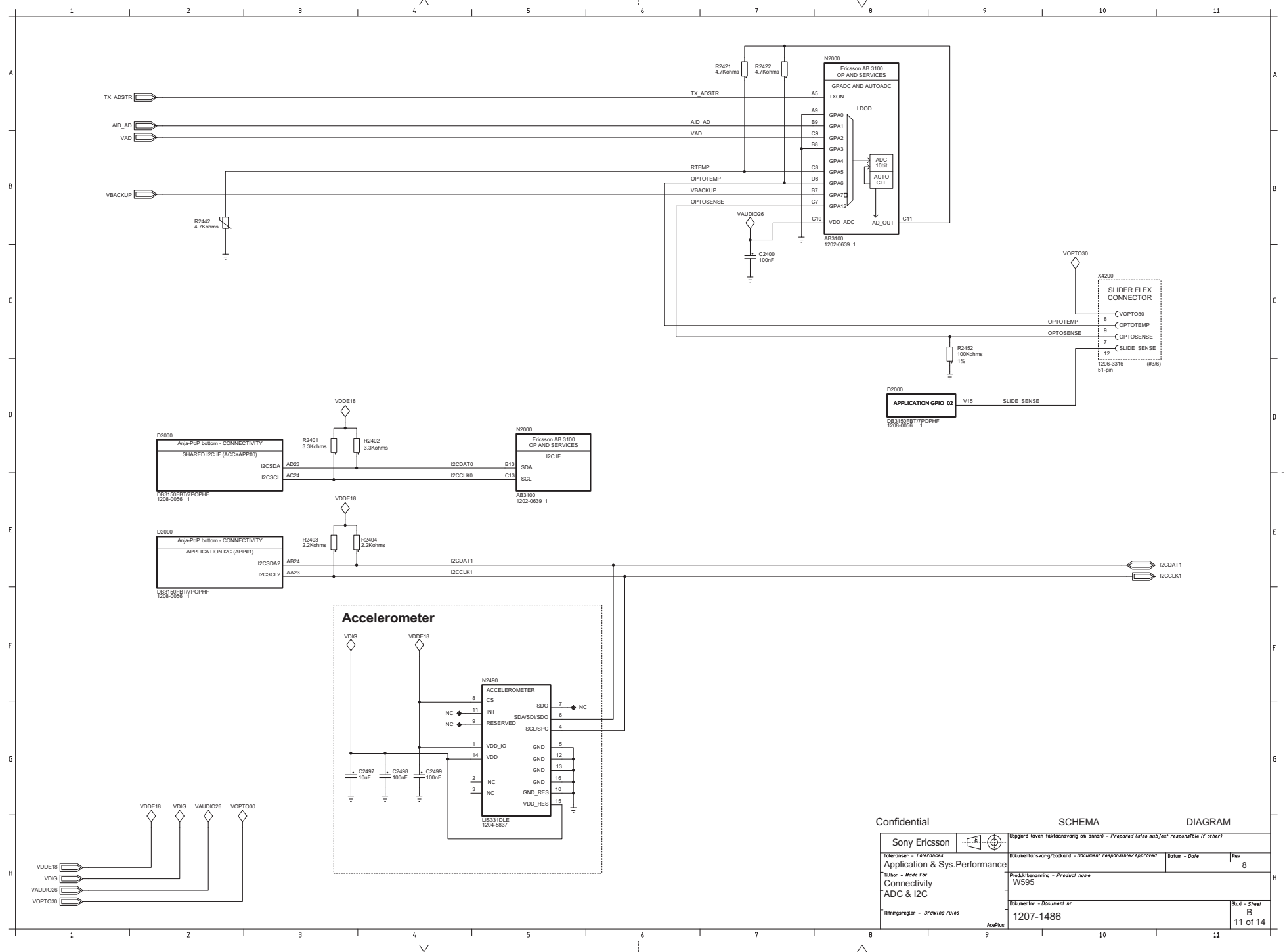
Confidential

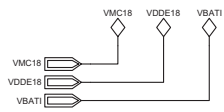
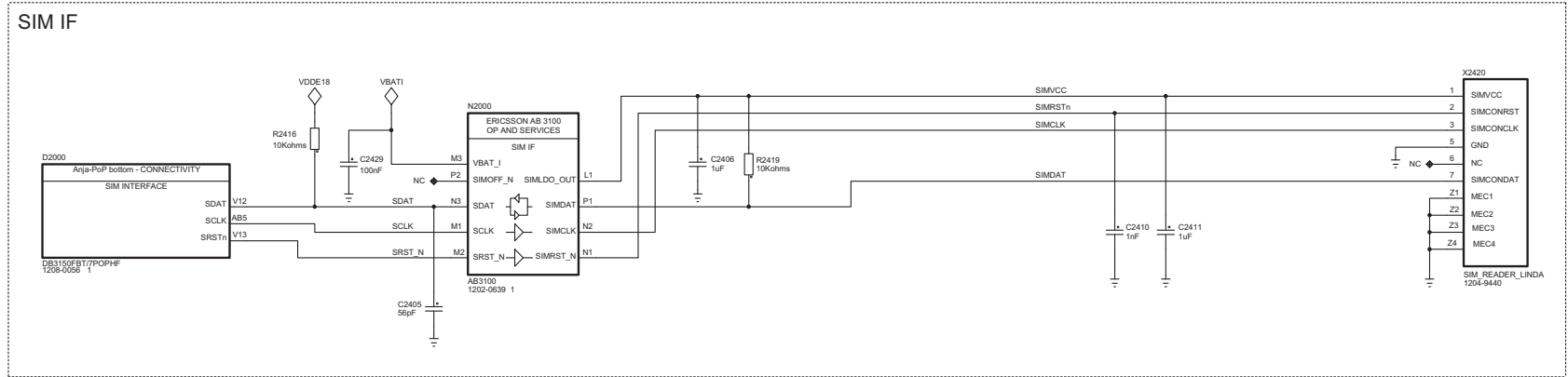
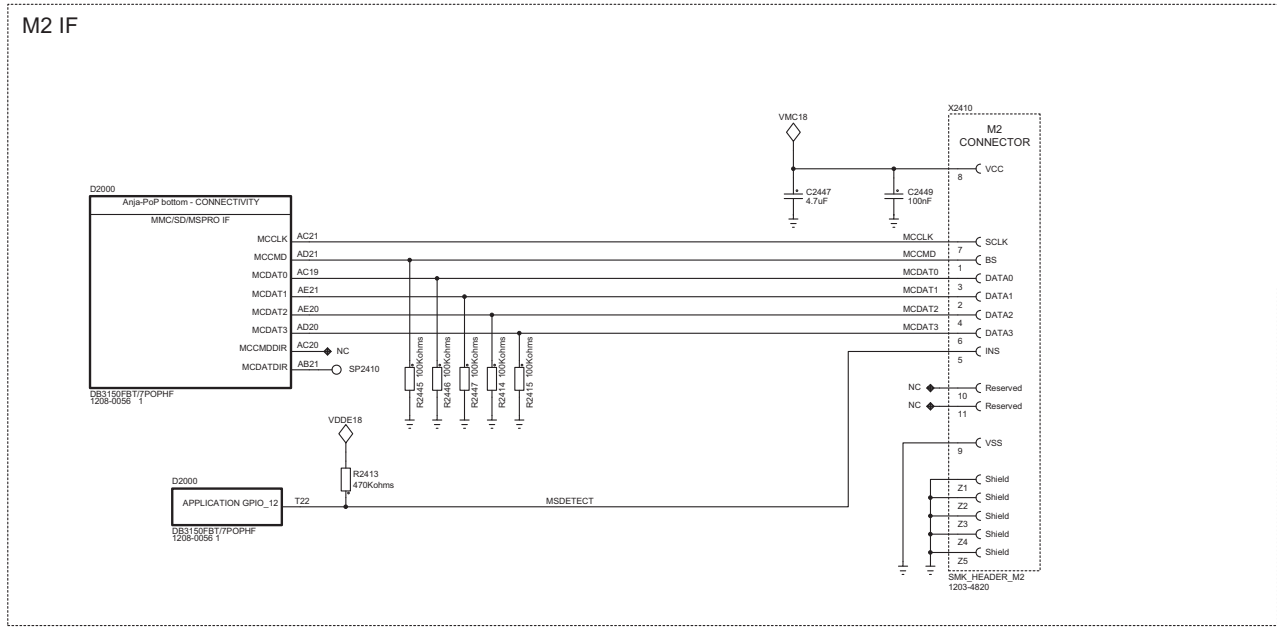
SCHEMA

DIAGRAM

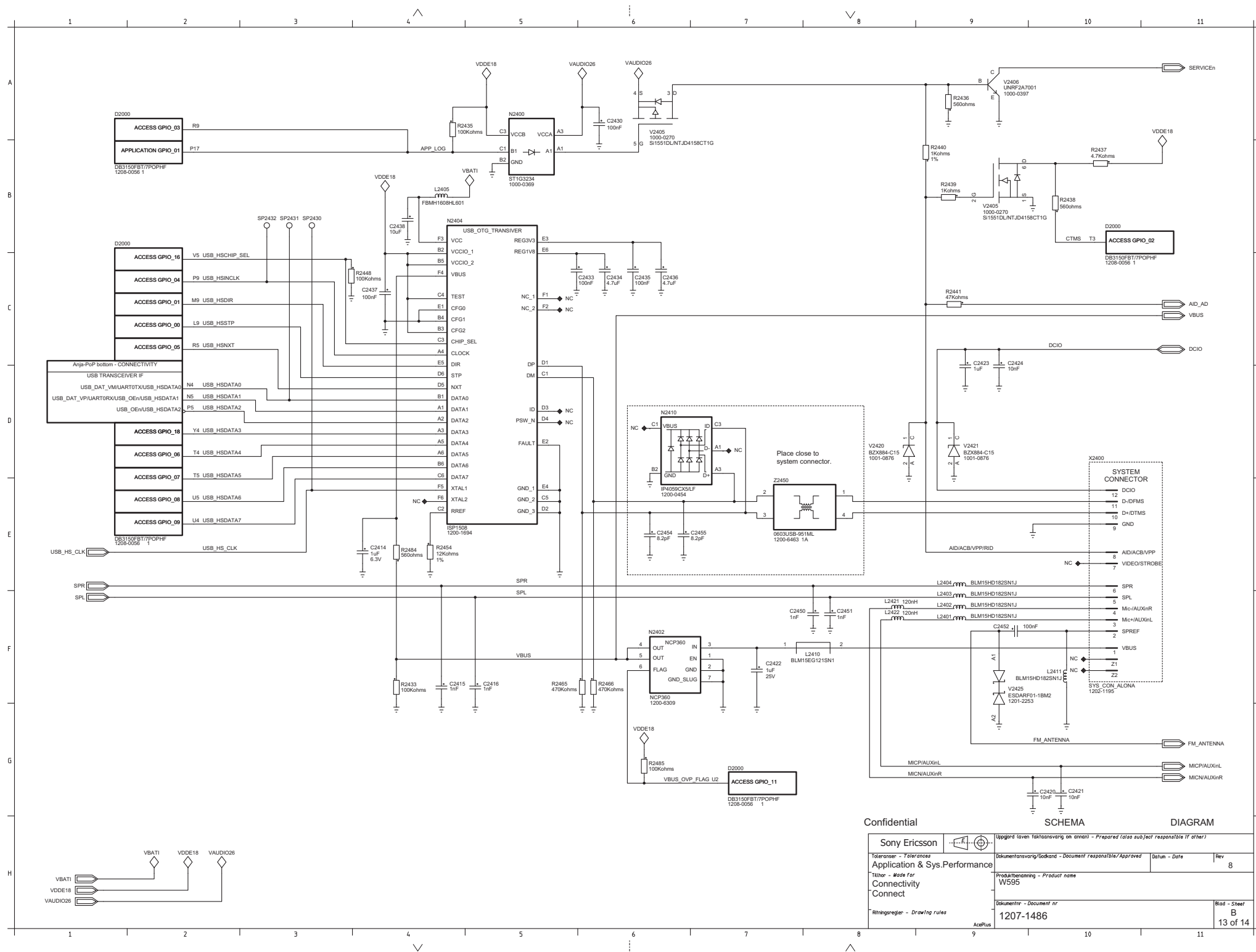
Sony Ericsson		Uppgård (given färdigställning och annan) - Prepared (also subject responsible if other)	
Toleranser - Tolerances		Dokumentansvarig/ansvarig - Document responsible/Approved	
Application & Sys.Performance		Datum - Date	
Titel - Made for		Rev	
Power		Produktbenämning - Product name	
Memories		W595	
Ritningsregler - Drawing rules		Dokumentnr - Document nr	
		1207-1486	
		Blad - Sheet	
		B	
		9 of 14	

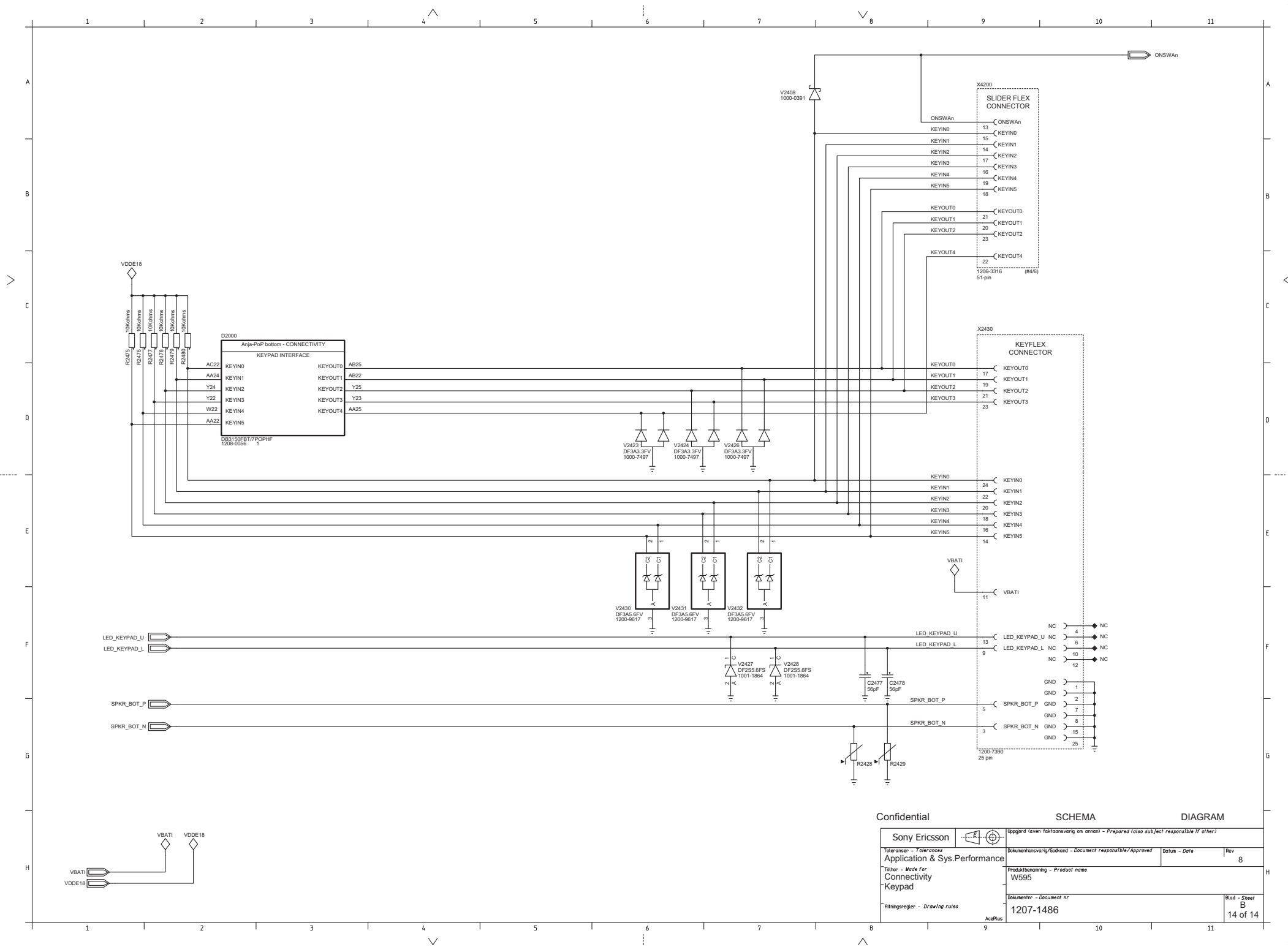
AcePlus





Confidential		SCHEMA		DIAGRAM	
Sony Ericsson		Uppgärd (given faktansvaring on annan) - Prepared (also subject responsible if other)			
Toleranser - Tolerances		Dokumentansvarig/lockand - Document responsible/Approved		Datum - Date	
Application & Sys.Performance		W555		Rev 8	
Titel - Made for		Produktbenämning - Product name			
Connectivity		1207-1486			
Cards		Dokumentnr - Document nr		Blad - Sheet	
Ritningsregler - Drawing rules		AcePlus		B 12 of 14	





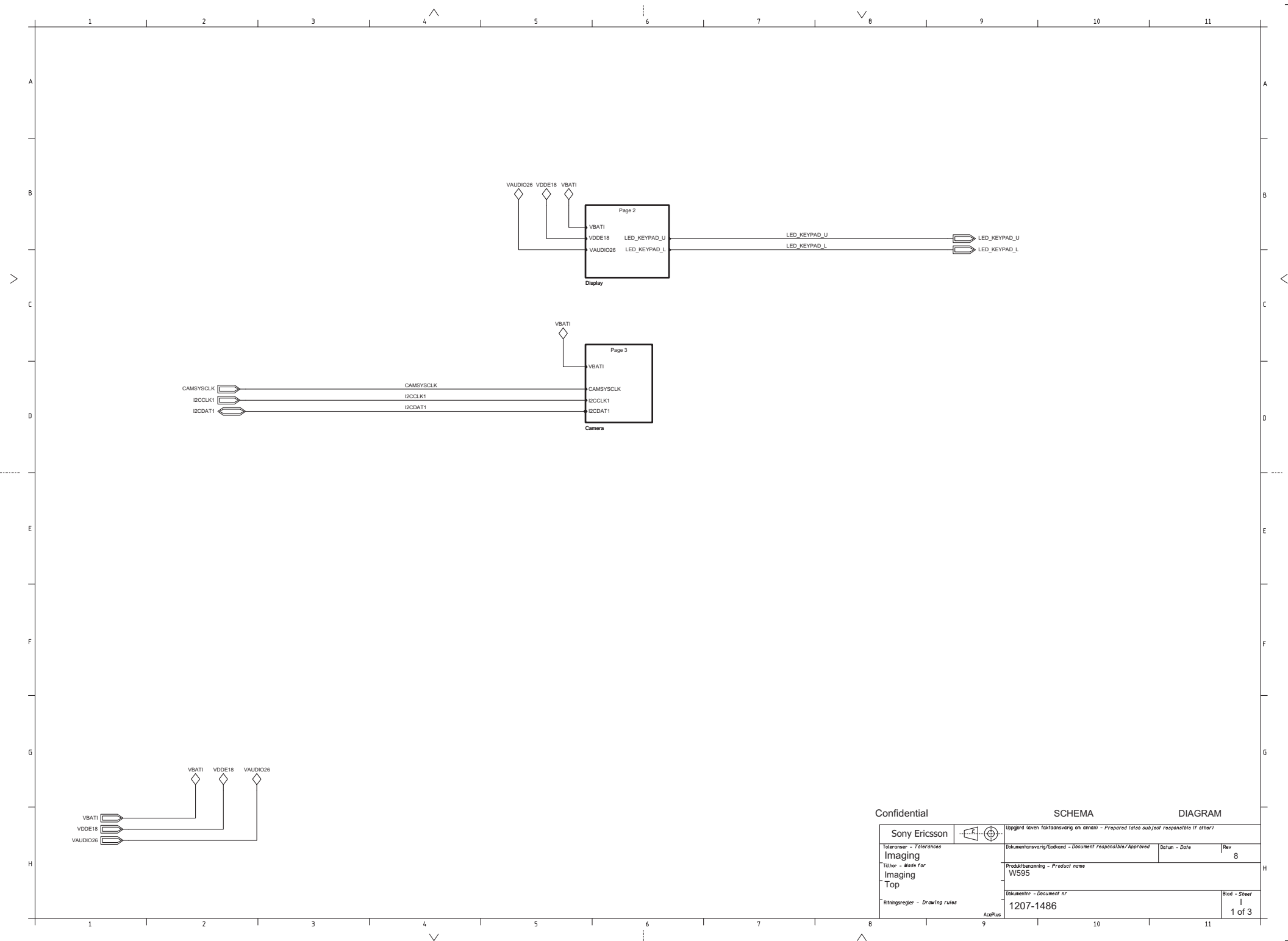
Confidential


SCHEMA

DIAGRAM

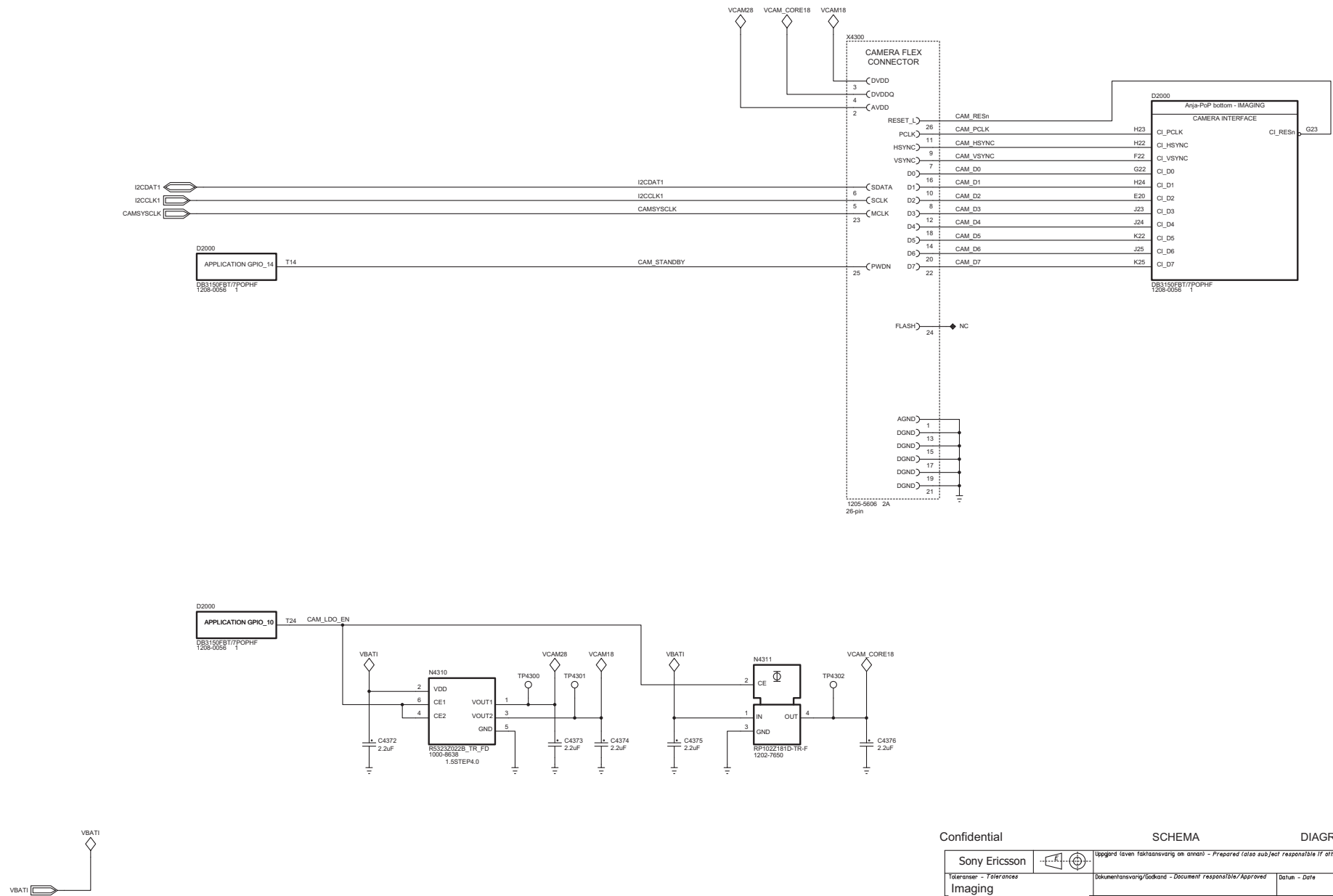
Sony Ericsson		Uppgärd (given faktansvaring on annan) - Prepared (also subject responsible if other)	
Toleranser - Tolerances		Datum - Date	
Application & Sys.Performance		Rev 8	
Tillhör - Made for		Produktbenämning - Product name	
Connectivity		W595	
Keypad		Blad - Sheet	
Ritningsregler - Drawing rules		B 14 of 14	
AcetPlus		1207-1486	


LZF 030 102/F RB

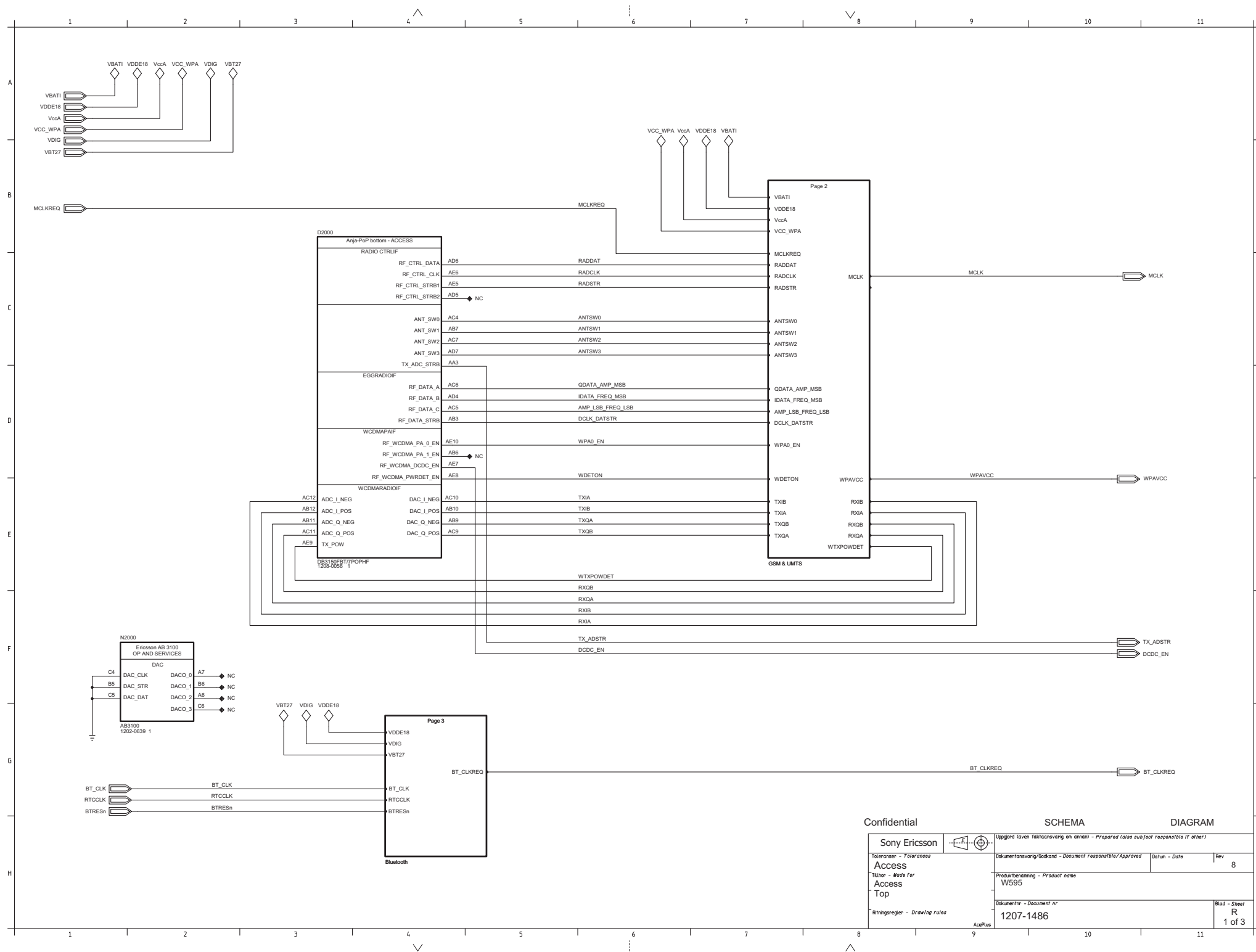


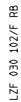
Confidential		SCHEMA		DIAGRAM	
Sony Ericsson		 Uppgjord (given färdigställning av annan) - Prepared (also subject responsible if other)			
Toleranser - Tolerances		Dokumentansvarig/Godkänd - Document responsible/Approved		Datum - Date	Rev
Imaging					8
Färdig - Made for		Produktbenämning - Product name			
Imaging		W595			
Top		Dokumentnr - Document nr			
Ritningsregler - Drawing rules		1207-1486			
AcePlus		Blad - Sheet			
		1 of 3			





Confidential		SCHEMA		DIAGRAM	
Sony Ericsson		 Uppgärd (även faktansvarig om annan) - Prepared (also subject responsible if other)			
Toleranser - Tolerances		Dokumentansvarig/Godkänd - Document responsible/Approved		Datum - Date	Rev
Imaging					8
Färdig - Made for		Produktnamnning - Product name			
Camera		W595			
		Dokumentnr - Document nr		Blad - Sheet	
Ritningsregler - Drawing rules		1207-1486			
AcePlus				3 of 3	







Revision History

Rev.	Date	Changes / Comments
1	2009-12-15	1 st release