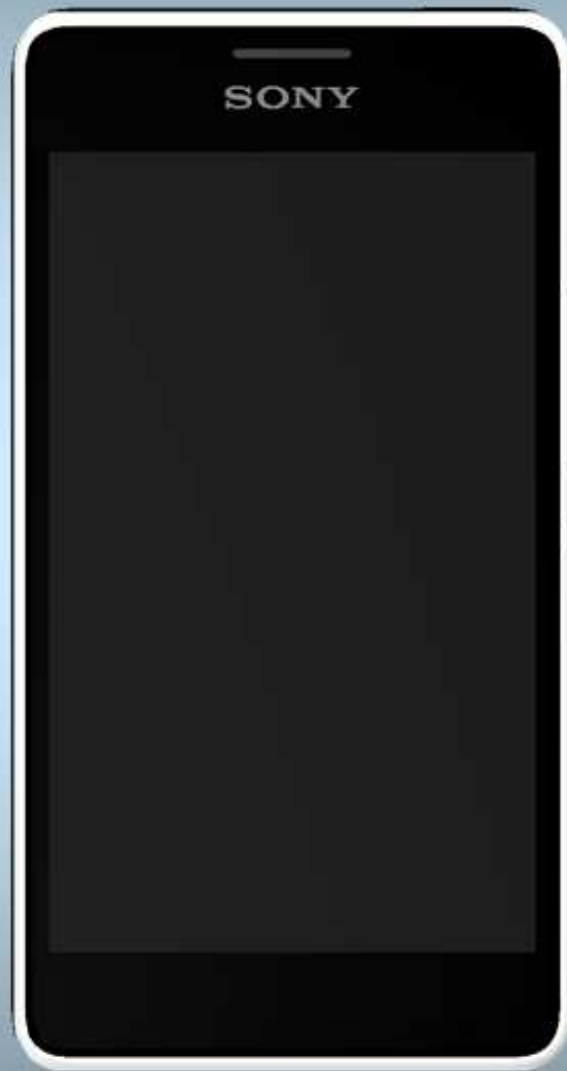


## Working Instructions

- mechanical -



*Xperia E1: D2005, D2004,  
Xperia E1 dual: D2105, D2104, D2114*

## CONTENTS

<b>1</b>	<b>Exterior Views.....</b>	<b>4</b>
1.1	D2005, D2004, D2105, D2104, D2114.....	4
<b>2</b>	<b>Tools .....</b>	<b>5</b>
<b>3</b>	<b>Disassembly.....</b>	<b>6</b>
3.1	Battery Cover Assy .....	6
3.2	Battery.....	7
3.3	Rear Cover Assy .....	7
3.4	Front Cover Assy with TP.....	10
3.5	Main PBA .....	12
3.6	LCM TFT 4.00 inch .....	14
<b>4</b>	<b>Replacement .....</b>	<b>15</b>
4.1	Battery Cover Assy .....	15
4.2	Rear Cover Assy .....	15
4.3	Screw TORX 1.6mm 2.3mm Black.....	15
4.4	Screw TORX 1.6mm 4.8mm Silver.....	15
4.5	Front Cover Assy with TP.....	16
4.6	LCM FPC Mylar .....	16
4.7	LCM TFT 4.00 inch .....	17
4.8	Core Unit Label.....	17
4.9	Camera Rubber .....	18
4.10	Camera Module CMOS 3M .....	19
4.11	RF Port Mylar.....	20
4.12	Conductive Adhesive Cloth1 .....	21
4.13	Conductive Adhesive Cloth2.....	22
4.14	Speaker & Speaker Sponge Adhesive .....	23
4.15	Charger LED Rubber.....	25
4.16	P sensor Light sensor Rubber .....	26
4.17	Receiver & Receiver Adhesive .....	27
4.18	Music Key .....	29
4.19	Power Key.....	30
4.20	Volume Key .....	31
4.21	Liquid Intrusion Label.....	32
4.22	Board Swap – Replacement .....	33
4.23	Board Swap – Change Label .....	33
4.24	Board Swap – Customize of Software .....	33
<b>5</b>	<b>Reassembly.....</b>	<b>34</b>
5.1	LCM TFT 4.00 inch .....	34
5.2	Main PBA .....	35
5.3	Front Cover Assy with TP.....	37

5.4 Rear Cover Assy ..... 39

5.5 Battery..... 40

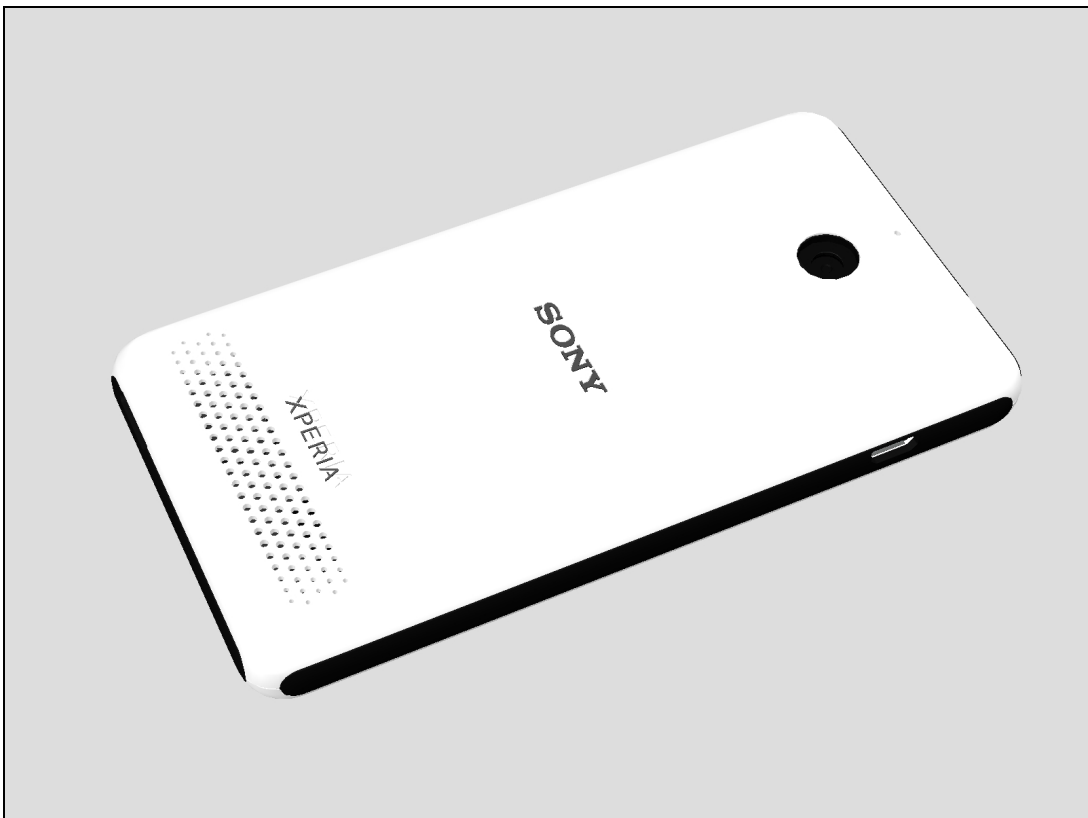
5.6 Battery Cover Assy ..... 41

6 Revision History ..... 42

For general information about mechanical repair related issues, refer to  
1220-1333: Generic Repair Manual - mechanical

## 1 Exterior Views

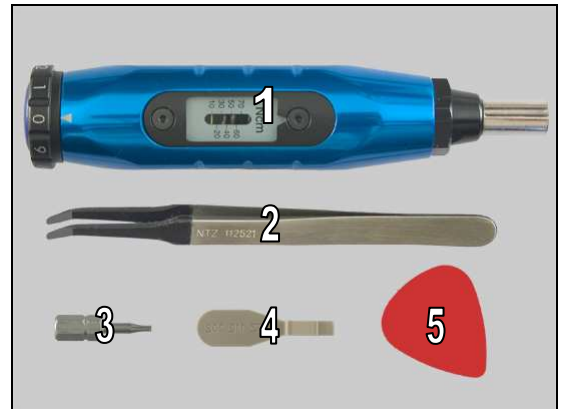
### 1.1 D2005, D2004, D2105, D2104, D2114



## 2 Tools

### SPECIAL TOOLS

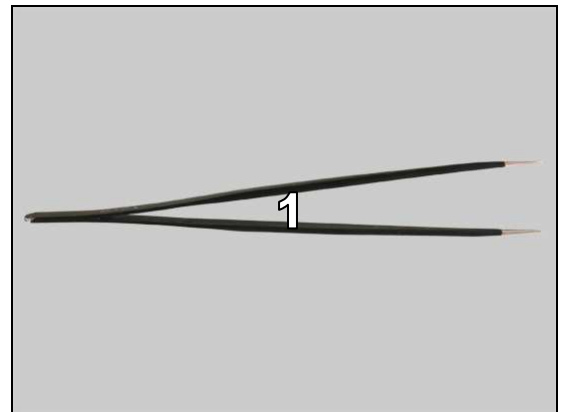
1. Torque Screwdriver
2. Flex Film Assembly Tool
3. Bits (T5)
4. Front Opening Tool
5. Guitar Pick



**For part no's on the tools above, refer to the 'Tools Catalogue/Matrix'!**

### STANDARD TOOLS

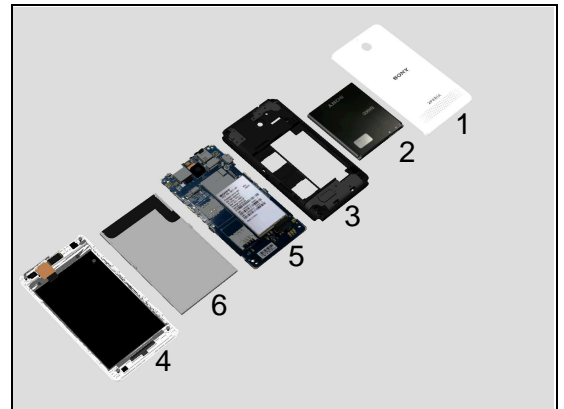
1. Tweezers



## 3 Disassembly

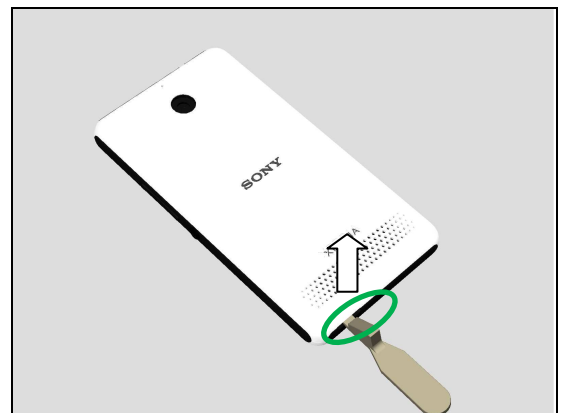
The disassembly is done in the following order:

1. Battery Cover Assy
2. Battery
3. Rear Cover Assy
4. Front Cover Assy with TP
5. Main PBA
6. LCM TFT 4.00 inch

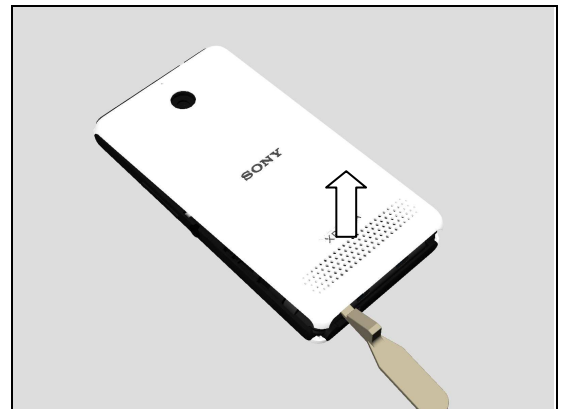


### 3.1 Battery Cover Assy

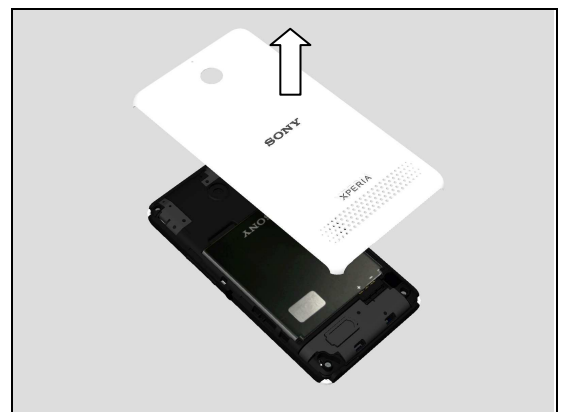
Insert Front Opening tool into the gap as shown in picture to release the hooks of the Battery Cover Assy.



Open the Battery Cover Assy.



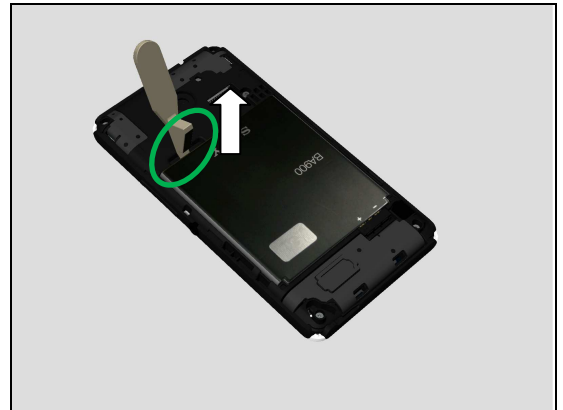
Remove the Battery Cover Assy.



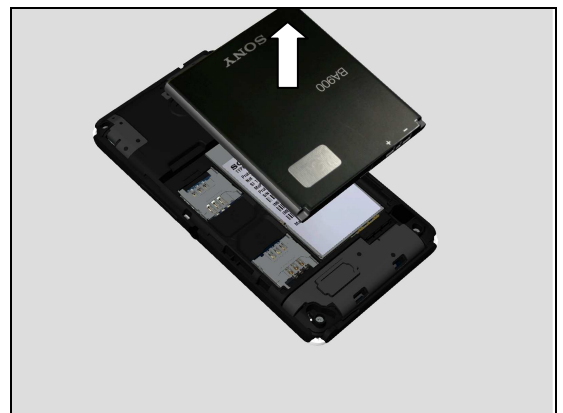
## Disassembly

### 3.2 Battery

Insert Front Opening tool into the gap as shown in picture to release the hooks of the Battery.



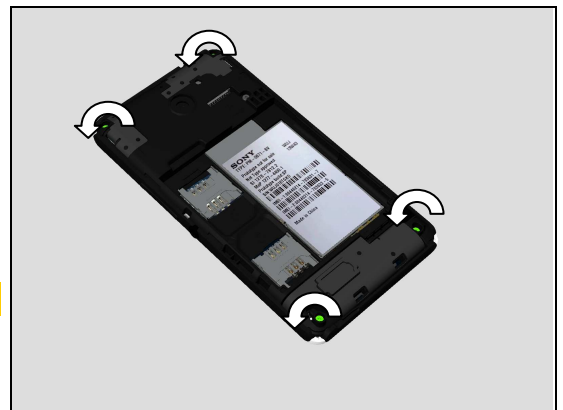
Remove the Battery.



### 3.3 Rear Cover Assy

Remove these four Screws(Screw TORX 1.6mm 4.8mm Silver) by using a screwdriver with Bits (T5).

**Scrap! Not to be reused!**



Remove this Screw(Screw TORX 1.6mm 2.3mm Black) by using a screwdriver with Bits (T5).

**Scrap! Not to be reused!**



## Disassembly

Insert Guitar Pick as shown in picture.



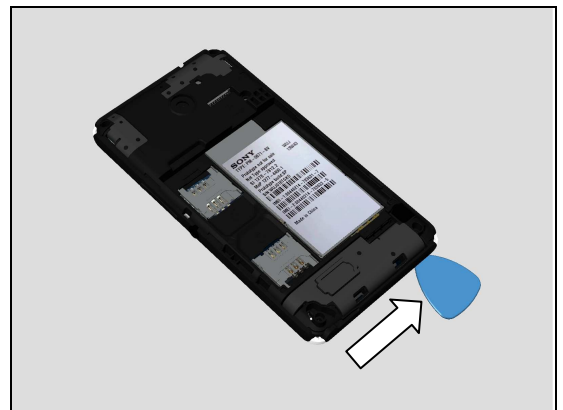
Slide Guitar Pick to release this side hooks.



Insert Guitar Pick as shown in picture.



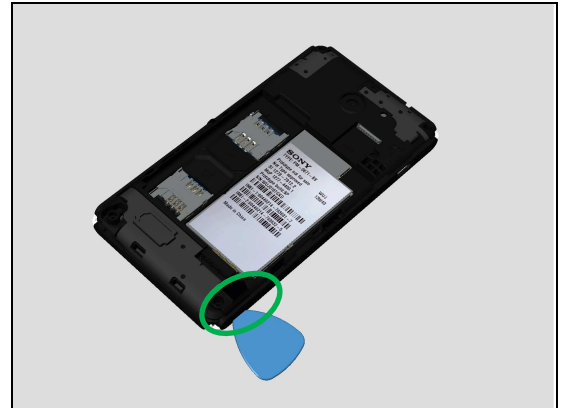
Slide Guitar Pick to release this 2<sup>nd</sup> side hooks.



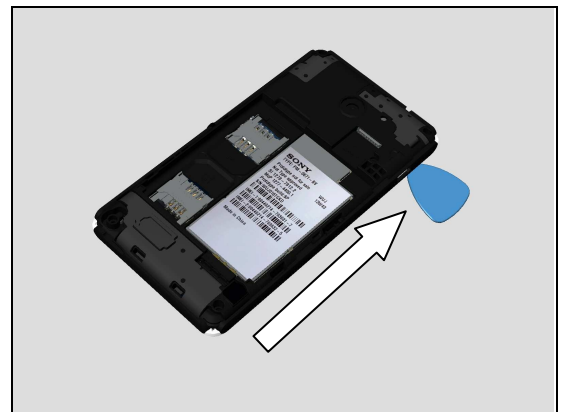


## Disassembly

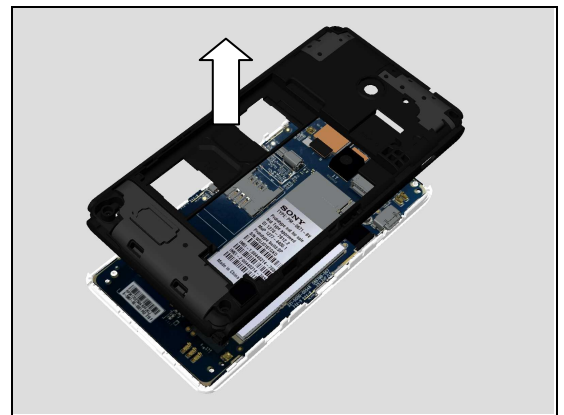
Turn around and Insert Guitar Pick as shown in picture..



Slide Guitar Pick to release the 3<sup>rd</sup> side hooks.



Remove the Rear Cover Assy.



Main PBA and Front Cover Assy with TP as shown in picture.



## Disassembly

### 3.4 Front Cover Assy with TP

Insert Front Opening Tool to open the Touch Panel FPC BtB connector.



Turn around the Touch Panel FPC from Main PBA.



There are 4 hooks around Front Cover Assy with TP.

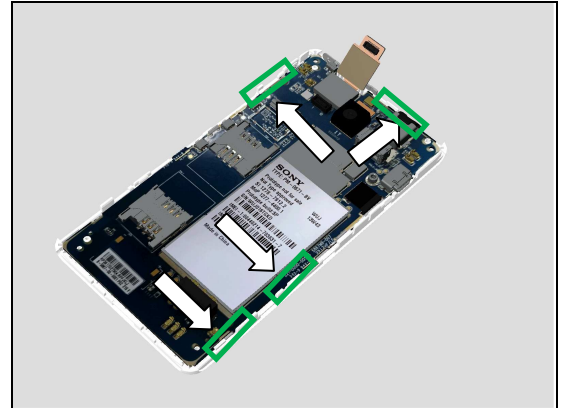


There are two Conductive Adhesive Cloth under Main PBA.

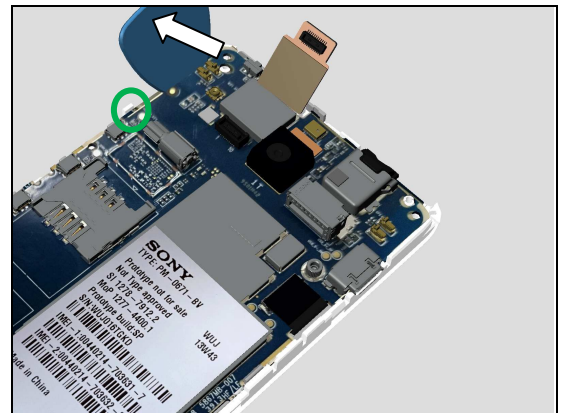


## Disassembly

Push to release the four hooks on Main PBA.



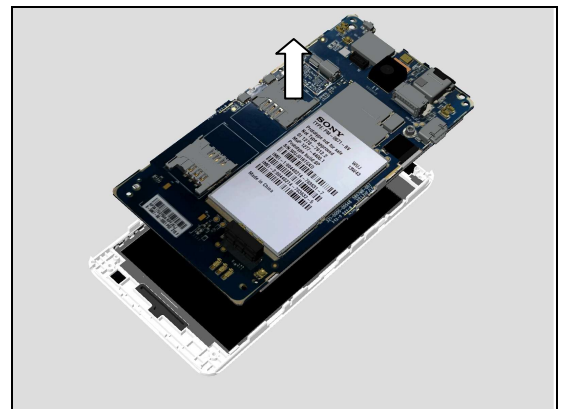
Insert Guitar Pick under LCM TFT 4.00 inch to release this side hooks.



Insert Guitar Pick under LCM TFT 4.00 inch on the other side to release the other side hooks.

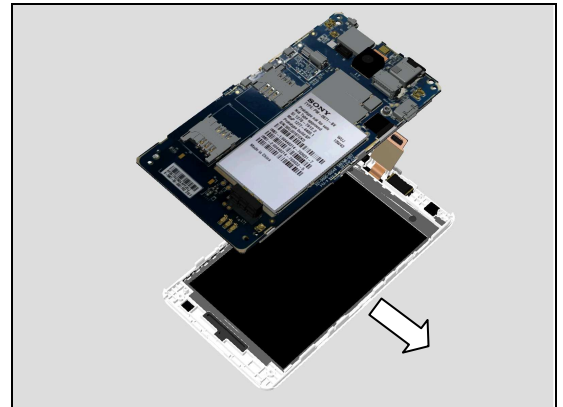


Lift up Main PBA with LCM TFT 4.00 inch.

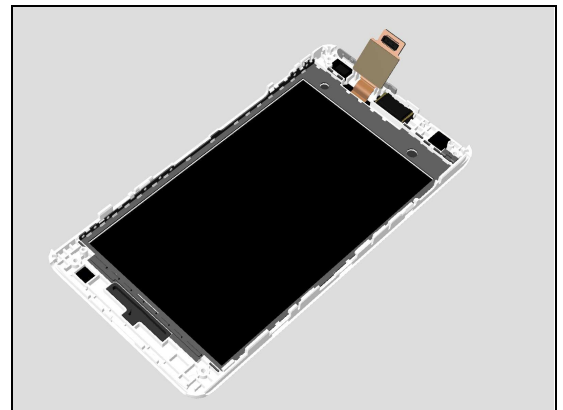


## Disassembly

Remove the Front Cover Assy with TP.



Front Cover Assy with TP as shown in picture.

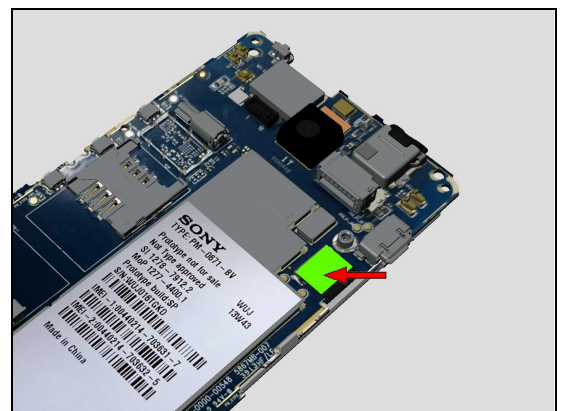


### 3.5 Main PBA

Main PBA with LCM TFT 4.00 inch as shown in Picture.



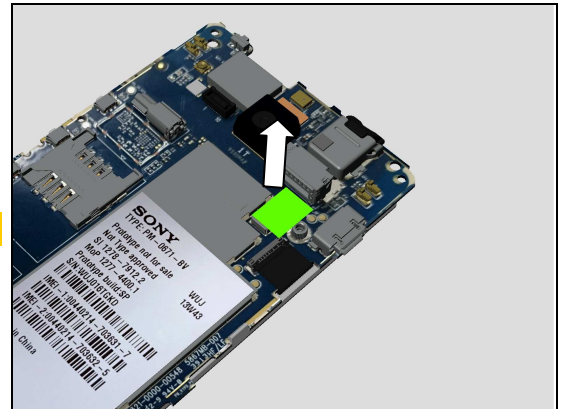
Pick up the LCM FPC Mylar.



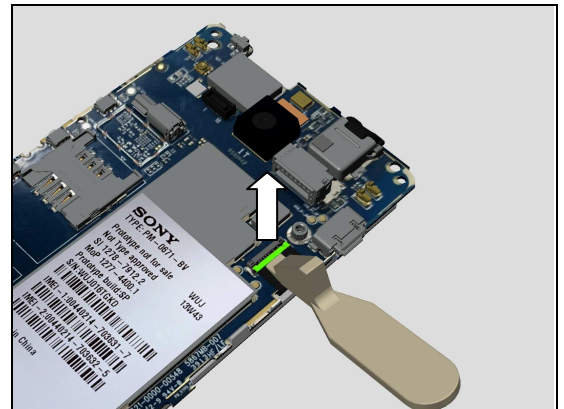
## Disassembly

Remove the LCM FPC Mylar.

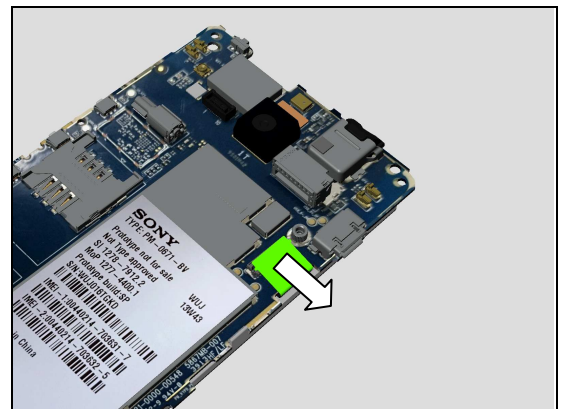
**Scrap! Not to be reused!**



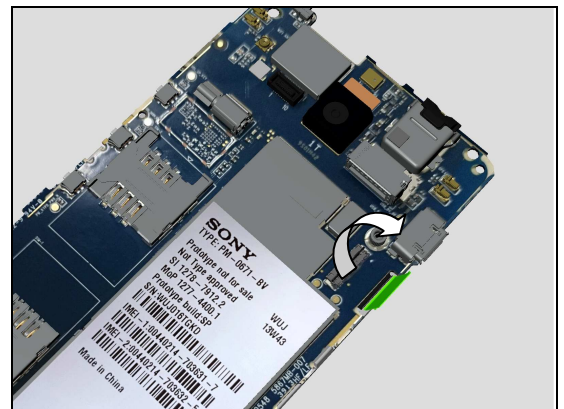
Open the LCM FPC ZIF connector using Front Opening Tool.



Pull out the LCM FPC from its ZIF connector.



Turn around LCM FPC from Main PBA.



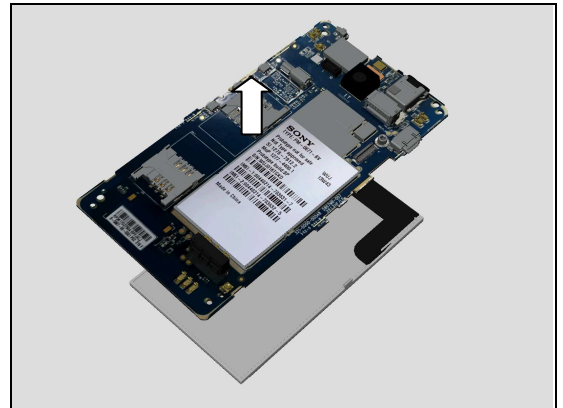


## Disassembly

Open these two LCM hooks from Main PBA.



Remove the Main PBA from LCM TFT 4.00 inch.

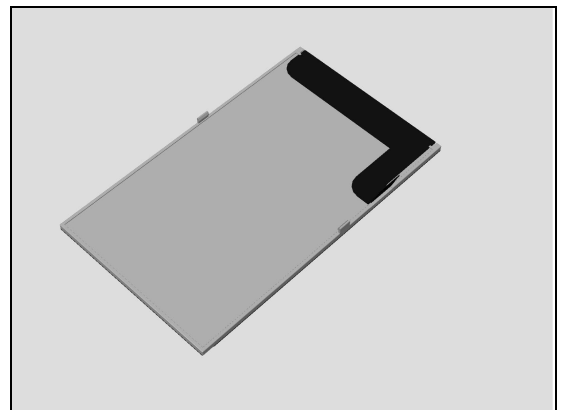


Main PBA as shown in picture.



### 3.6 LCM TFT 4.00 inch

LCM TFT 4.00 inch as shown in picture.



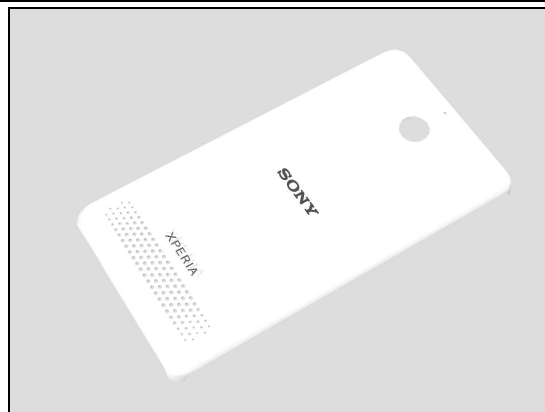
## 4 Replacement

### 4.1 Battery Cover Assy

*Follow the 3.1 Disassembly instructions!*

Prepare a new Battery Cover Assy.

*Follow the 5.6 Reassembly instructions!*



### 4.2 Rear Cover Assy

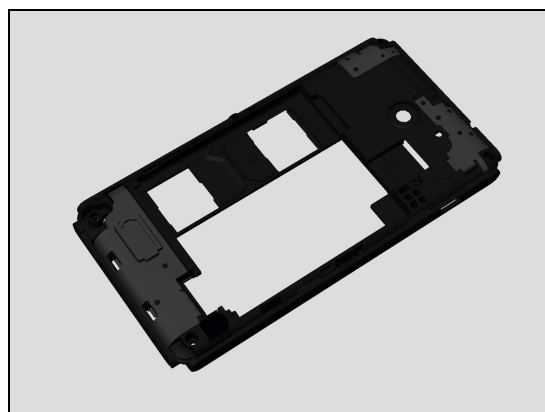
*Follow the 3.1 – 3.3 Disassembly instructions!*

*Follow the 4.14, 4.18, 4.19, 4.20 Removal instructions!*

Prepare a new Rear Cover Assy.

*Follow the 4.14, 4.18, 4.19, 4.20 Installation instructions!*

*Follow the 5.4 -- 5.6 Reassembly instructions!*

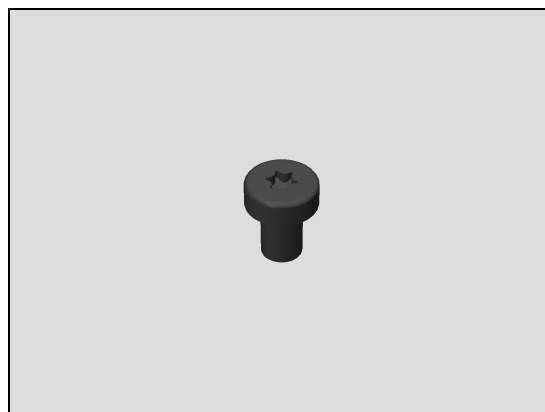


### 4.3 Screw TORX 1.6mm 2.3mm Black

*Follow the 3.1 – 3.3 Disassembly instructions!*

Prepare new Screws.

*Follow the 5.4 – 5.6 Reassembly instructions!*



### 4.4 Screw TORX 1.6mm 4.8mm Silver

*Follow the 3.1 – 3.3 Disassembly instructions!*

Prepare new Screws.

*Follow the 5.4 – 5.6 Reassembly instructions!*



## Replacement

### 4.5 Front Cover Assy with TP

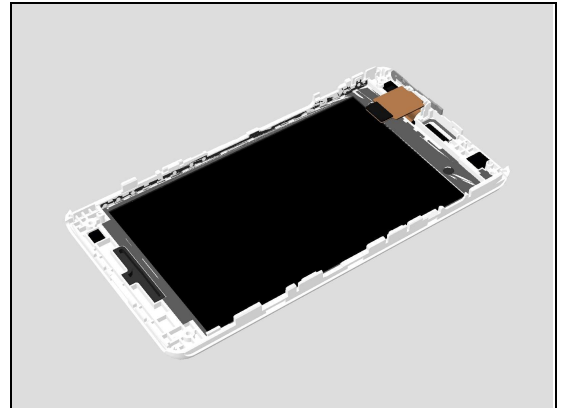
*Follow the 3.1 – 3.6 Disassembly instructions!*

*Follow 4.15, 4.12, 4.13, 4.17, 4.16 Removal instructions.*

*Prepare a new Front Cover Assy with TP.*

*Follow 4.15, 4.12, 4.13, 4.17, 4.16 Installation instructions.*

*Follow the 5.1 – 5.6 Reassembly instructions!*



### 4.6 LCM FPC Mylar

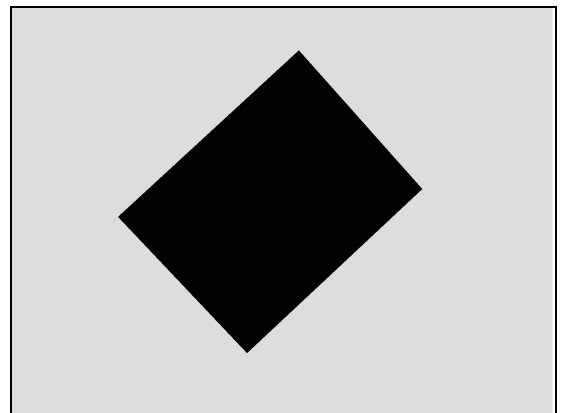
*Follow the 3.1 – 3.3 Disassembly instructions!*

*Carry out the Removal as described below.*

*Prepare new LCM FPC Mylar.*

*Carry out the Installation as described below.*

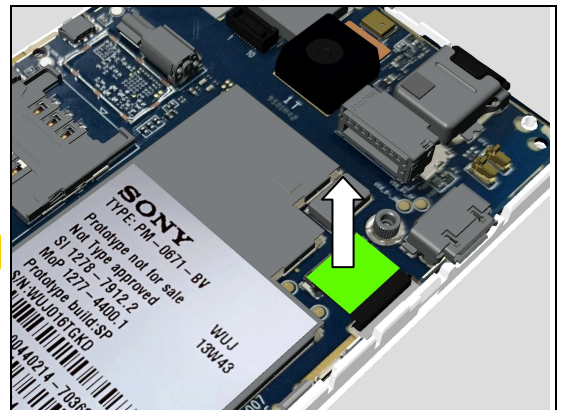
*Follow the 5.4 – 5.6 Reassembly instructions!*



#### Removal

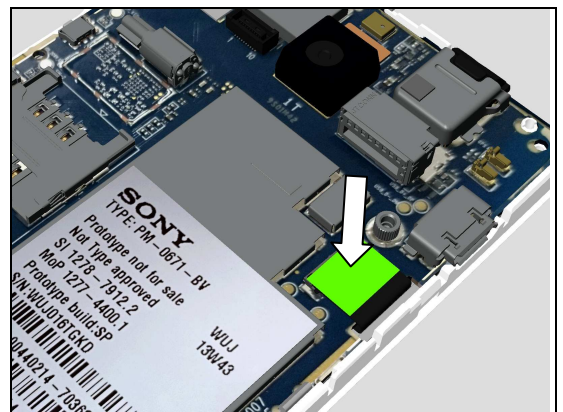
Remove the LCM FPC Mylar.

**Scrap! Not to be reused!**



#### Installation

Attach a new LCM FPC Mylar.





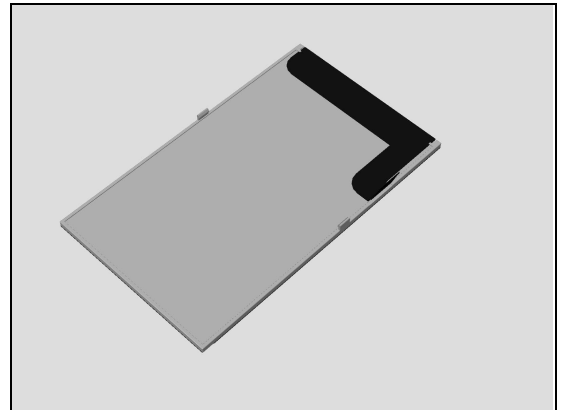
## Replacement

### 4.7 LCM TFT 4.00 inch

*Follow the 3.1 – 3.6 Disassembly instructions!*

Prepare a new LCM TFT 4.00 inch.

*Follow the 5.1 – 5.6 Reassembly instructions!*



### 4.8 Core Unit Label

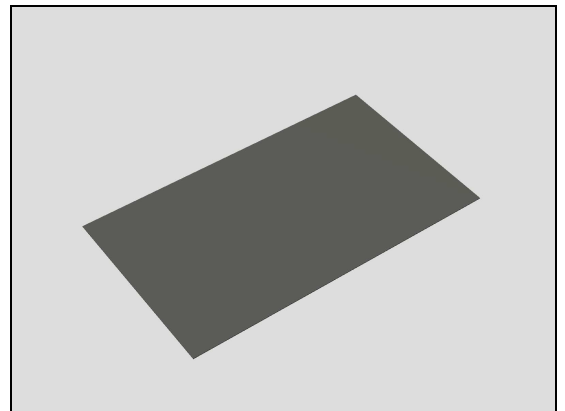
*Follow the 3.1 – 3.2 Disassembly instructions!*

Carry out the Removal as described below.

Prepare a new Core Unit Label.

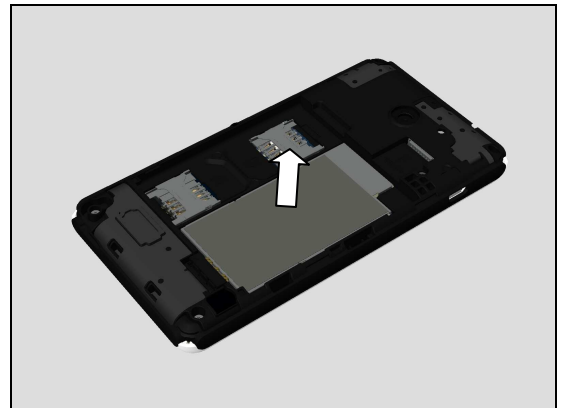
Carry out the Installation as described below.

*Follow the 5.5 – 5.6 Reassembly instructions!*



#### Removal

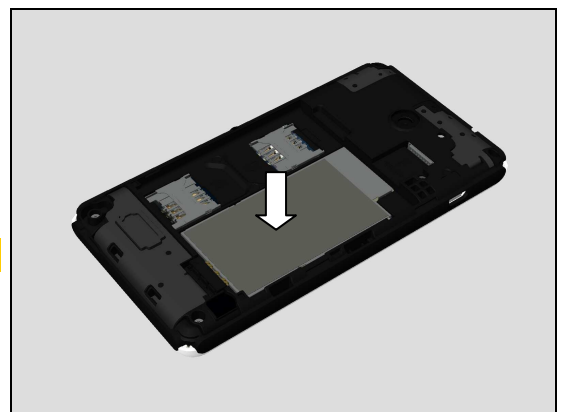
Peel off the Core Unit label from Rear Cover Assy.



#### Installation

Attach a new Core Unit Label carefully.

**Only one Label is attached.**



## Replacement

### 4.9 Camera Rubber

*Follow the 3.1 – 3.3 Disassembly instructions!*

Carry out the Removal as described below.

Prepare a new Camera Rubber.

Carry out the Installation as described below.

*Follow the 5.4 – 5.6 Reassembly instructions!*

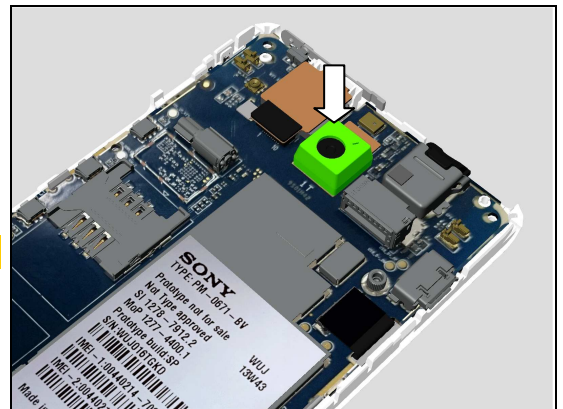
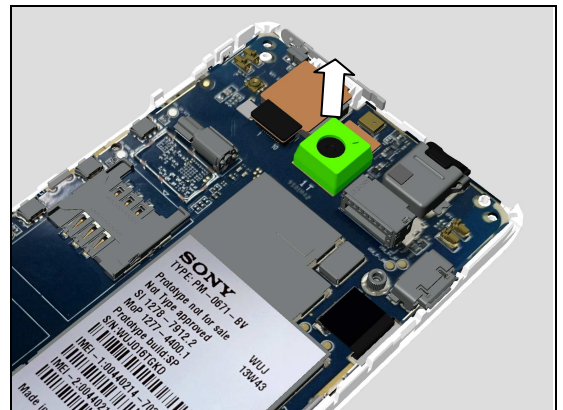
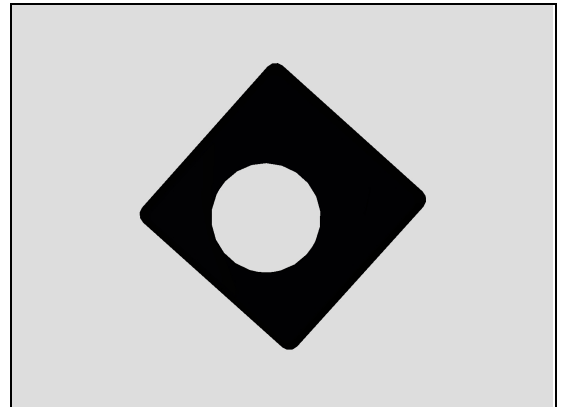
#### Removal

Remove the Camera Rubber from Camera Module CMOS 3M.

#### Installation

Attach a new Camera Rubber carefully.

**Pay more attention about its direction!**



## Replacement

### 4.10 Camera Module CMOS 3M

Follow the 3.1 – 3.3 Disassembly instructions!  
 Follow the 4.9 Disassembly instructions!  
 Carry out the Removal as described below.  
 Prepare a new Camera Module CMOS 3M.  
 Carry out the Installation as described below.  
*Follow the 4.9 Reassembly instructions!*  
*Follow the 5.4 – 5.6 Reassembly instructions!*

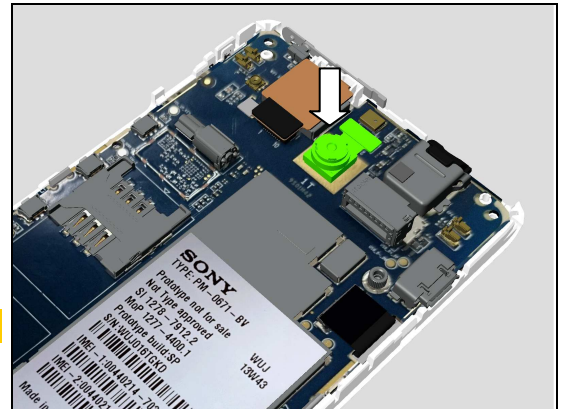
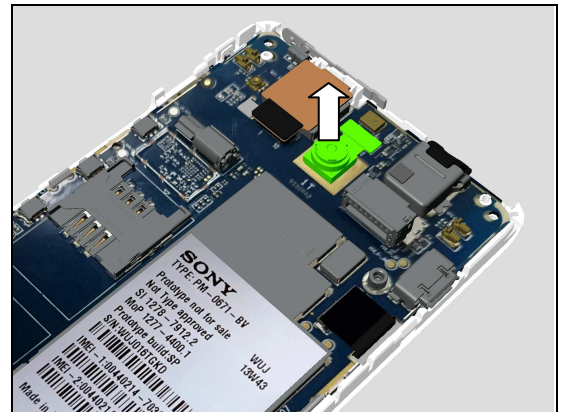
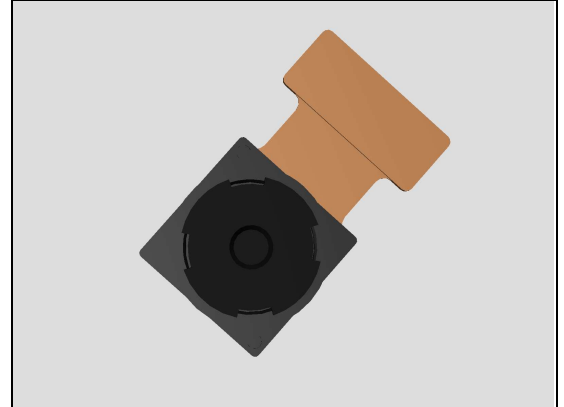
#### REMOVAL

Remove the Camera Module CMOS 3M.

#### INSTALLATION

Place a new Camera Module CMOS 3M in the correct position as shown in the picture, ensure its BtB connector well assembled.

**Be careful, do not damage Camera Module CMOS 3M!**



## Replacement

### 4.11 RF Port Mylar

*Follow the 3.1 Disassembly instructions!*

Carry out the Removal as described below.

Prepare a new RF Port Mylar.

Carry out the Installation as described below.

*Follow the 5.6 Reassembly instructions!*

#### REMOVAL

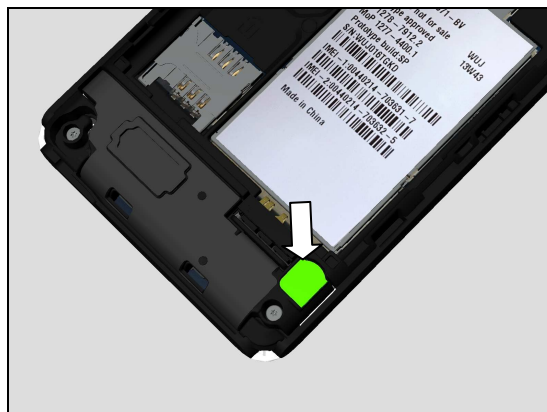
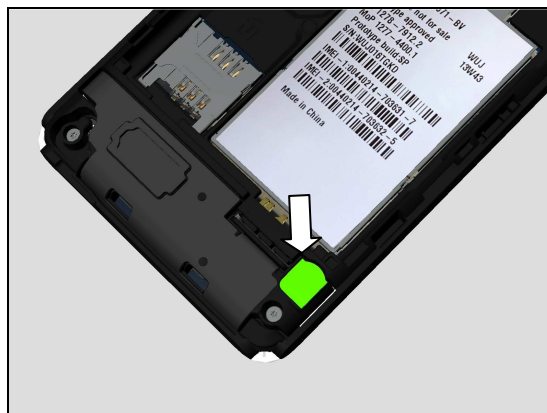
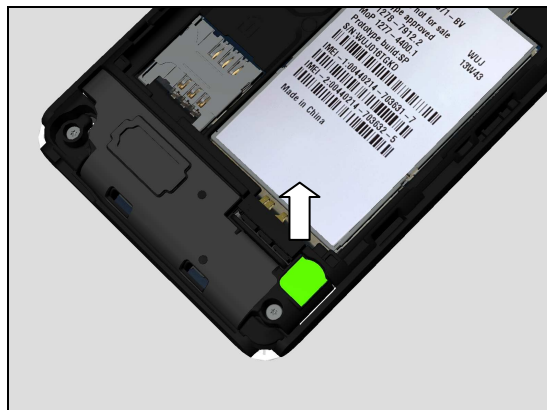
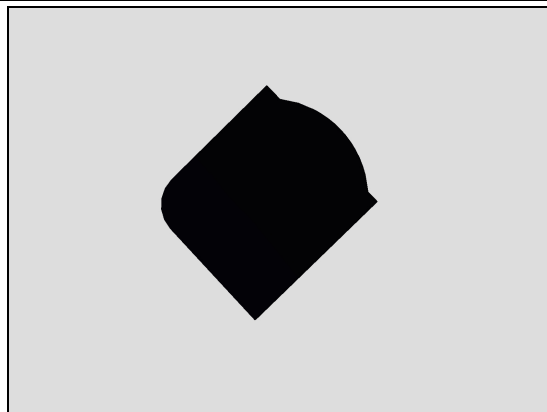
Peel off the RF Port Mylar.

**Scrap! Not to be reused!**

#### INSTALLATION

Place a new RF Port Mylar in the correct position as shown in the picture.

Press to secure its attachment.



## Replacement

### 4.12 Conductive Adhesive Cloth1

*Follow the 3.1 – 3.6 Disassembly instructions!*

Carry out the Removal as described below.

Prepare a new Conductive Adhesive Cloth1.

Carry out the Installation as described below.

*Follow the 5.1 – 5.6 Reassembly instructions!*

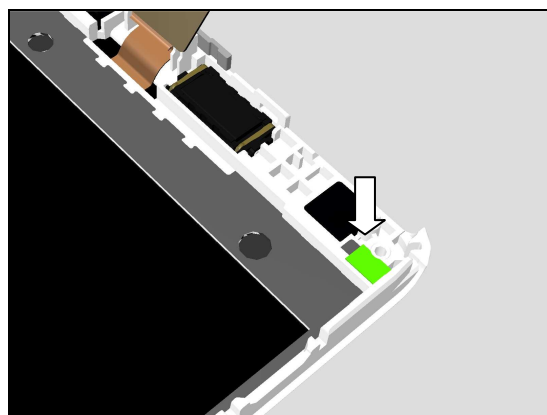
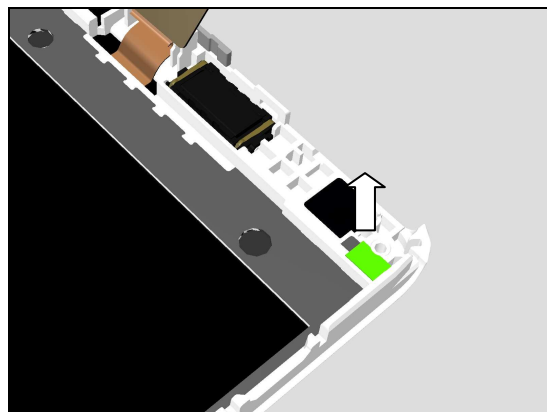
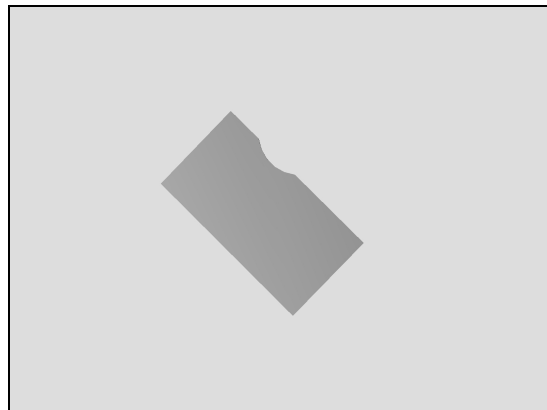
#### REMOVAL

Peel off the Conductive Adhesive Cloth1.

**Scrap! Not to be reused!**

#### INSTALLATION

Place a new Conductive Adhesive Cloth1 in the correct position as shown in the picture.



## Replacement

### 4.13 Conductive Adhesive Cloth2

*Follow the 3.1 – 3.6 Disassembly instructions!*  
 Carry out the Removal as described below.  
 Prepare a new Conductive Adhesive Cloth2.  
 Carry out the Installation as described below.  
*Follow the 5.1 – 5.6 Reassembly instructions!*

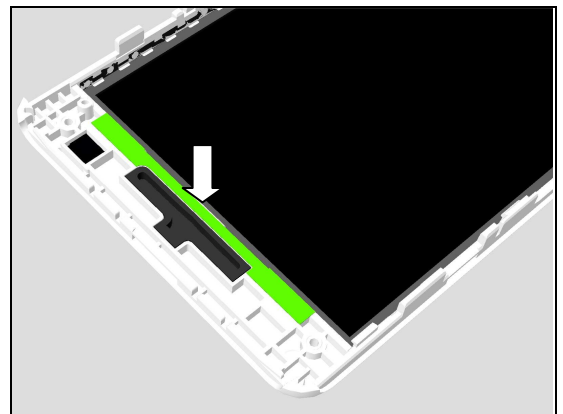
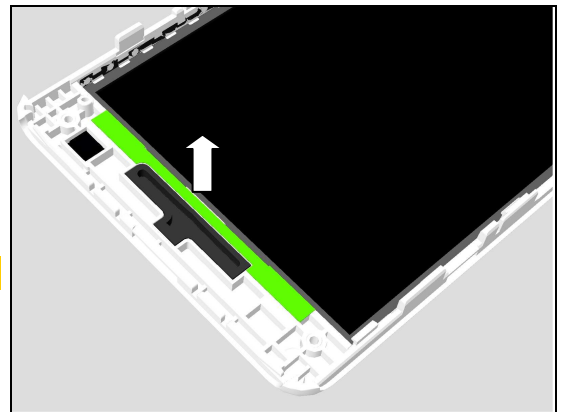
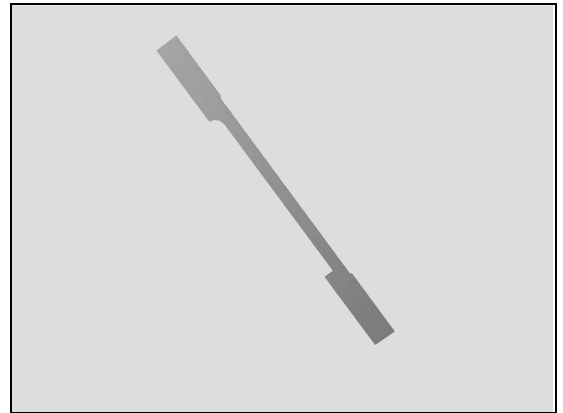
#### REMOVAL

Peel off the Conductive Adhesive Cloth2.

**Scrap! Not to be reused!**

#### INSTALLATION

Place a new Conductive Adhesive Cloth2 in the correct position as shown in the picture.



## Replacement

### 4.14 Speaker & Speaker Sponge Adhesive

*Follow the 3.1 – 3.3 Disassembly instructions!*

Carry out the Removal as described below.

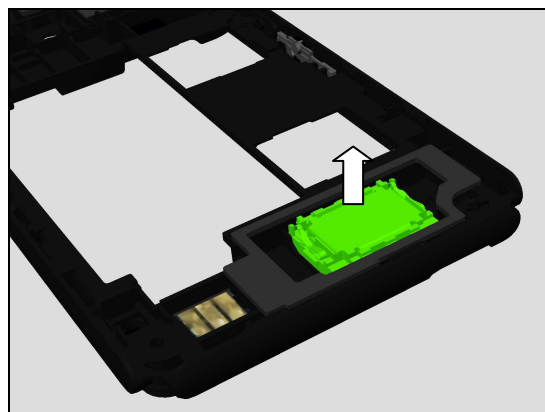
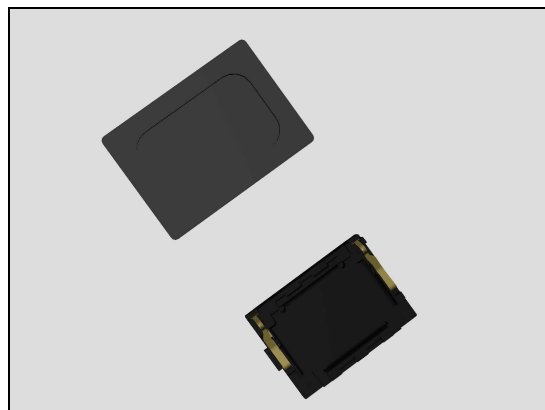
Prepare a new Speaker and Speaker Sponge Adhesive.

Carry out the Installation as described below.

*Follow the 5.4 – 5.6 Reassembly instructions!*

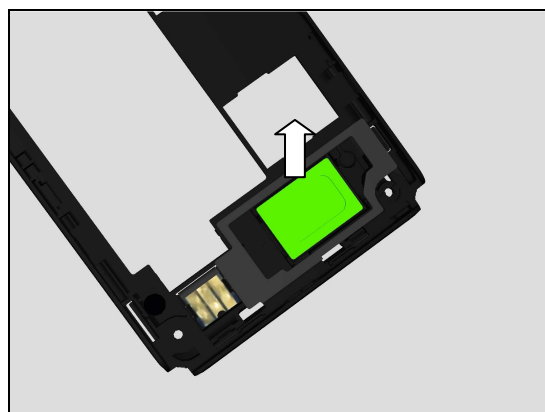
#### REMOVAL

Detach the Speaker by using a pair of tweezers.



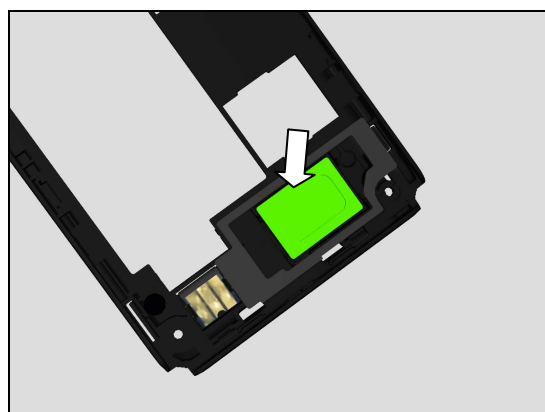
Peel off the Speaker Sponge Adhesive.

**Scrap! Not to be reused!**



#### INSTALLATION

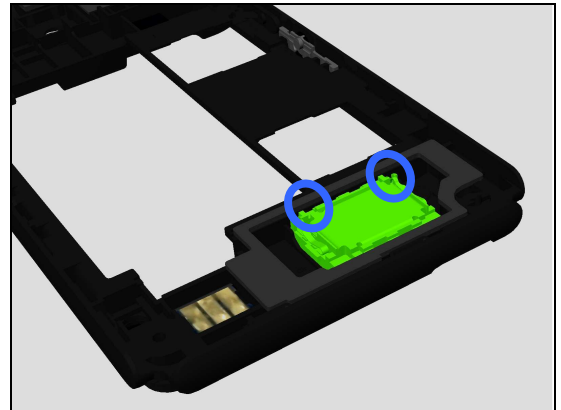
Place a new Speaker Sponge Adhesive in the correct position as shown in the picture.



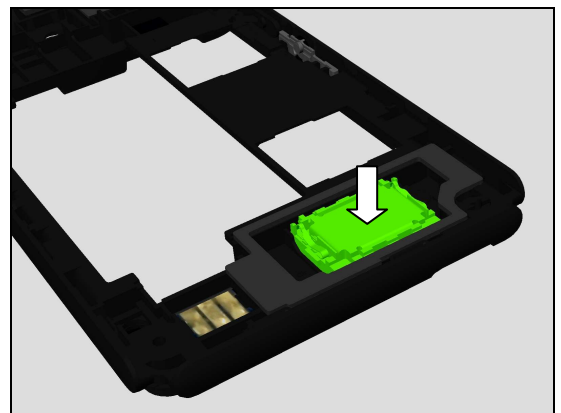
## Replacement

Place a new Speaker in the correct position.

***Make sure the Pin direction is correct!***



Press to secure its attachment.





## Replacement

### 4.15 Charger LED Rubber

*Follow the 3.1 – 3.6 Disassembly instructions!*

Carry out the Removal as described below.

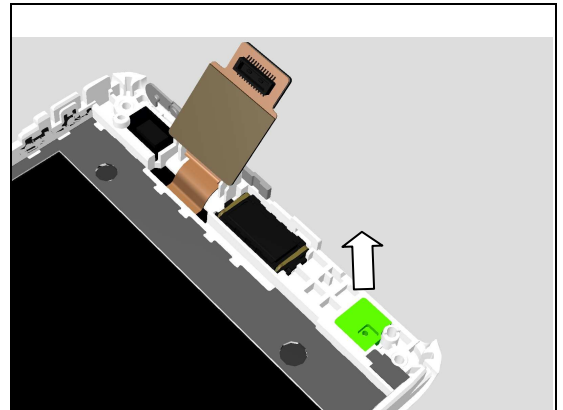
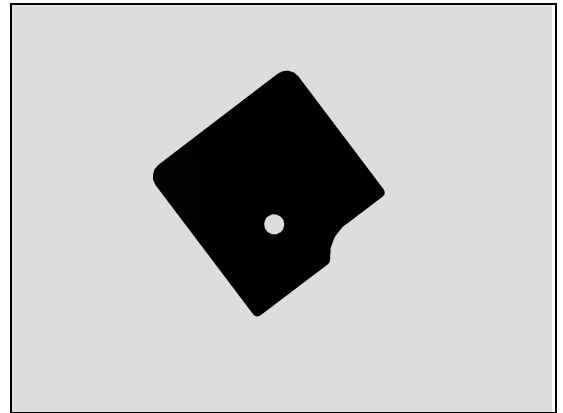
Prepare a new Charger LED Rubber.

Carry out the Installation as described below.

*Follow the 5.1 – 5.6 Installation instructions!*

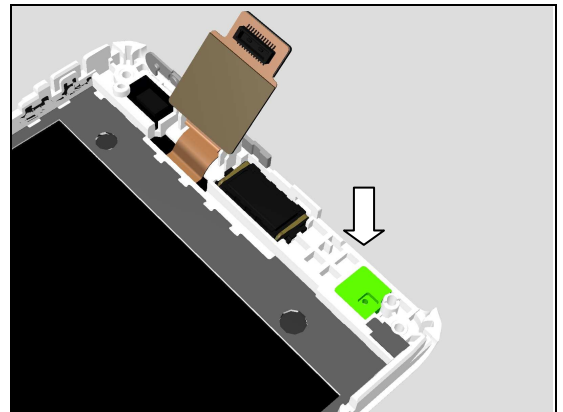
#### REMOVAL

Remove the Charger LED Rubber.



#### INSTALLATION

Assemble the new Charger LED Rubber.



## Replacement

### 4.16 P sensor Light sensor Rubber

*Follow the 3.1 – 3.6 Disassembly instructions!*

Carry out the Removal as described below.

Prepare a new P sensor Light sensor Rubber.

Carry out the Installation as described below.

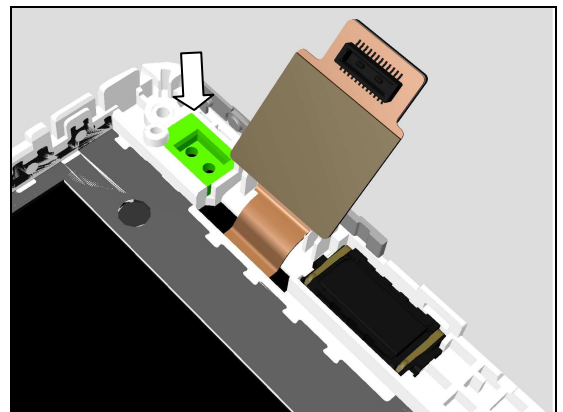
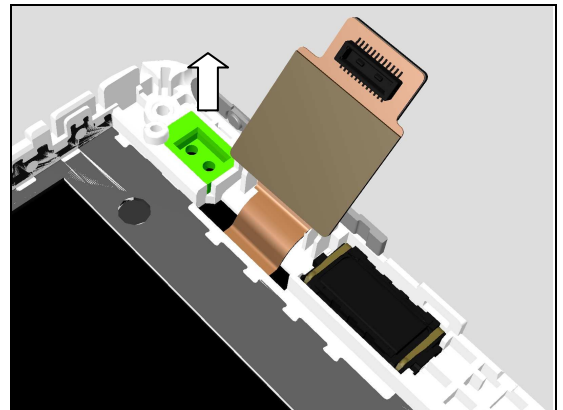
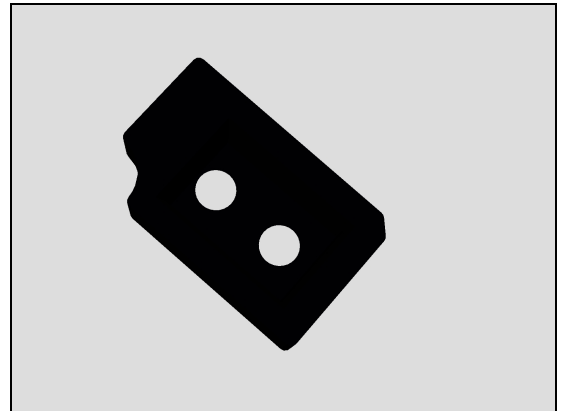
*Follow the 5.1 – 5.6 Reassembly instructions!*

#### REMOVAL

Remove the P sensor Light sensor Rubber.

#### INSTALLATION

Place a new P sensor Light sensor Rubber.



## Replacement

### 4.17 Receiver & Receiver Adhesive

*Follow the 3.1 – 3.6 Disassembly instructions!*

Carry out the Removal as described below.

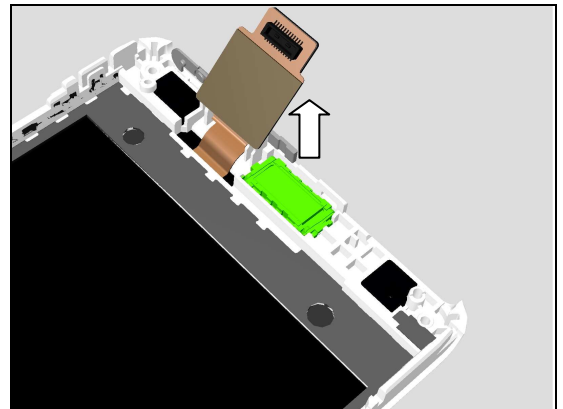
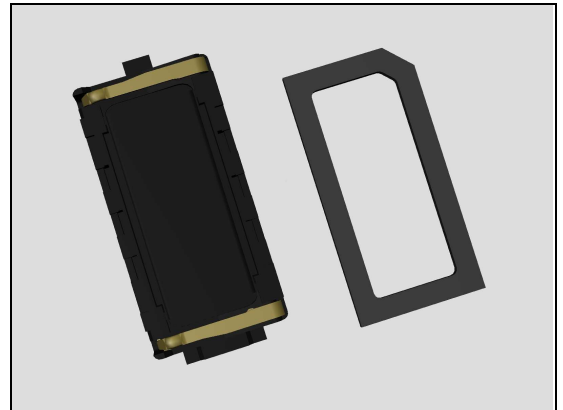
Prepare a new Receiver and Receiver Adhesive.

Carry out the Installation as described below.

*Follow the 5.1 – 5.6 Reassembly instructions!*

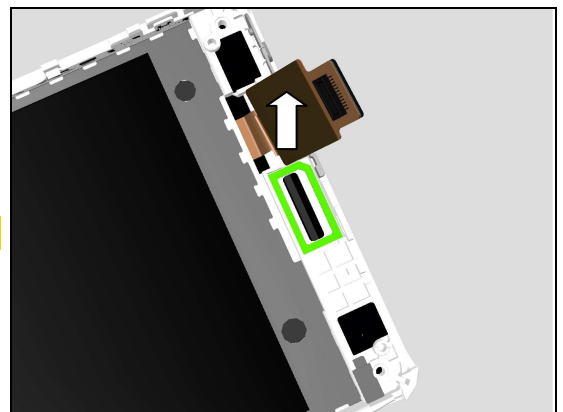
#### REMOVAL

Detach the Receiver by using a pair of tweezers.



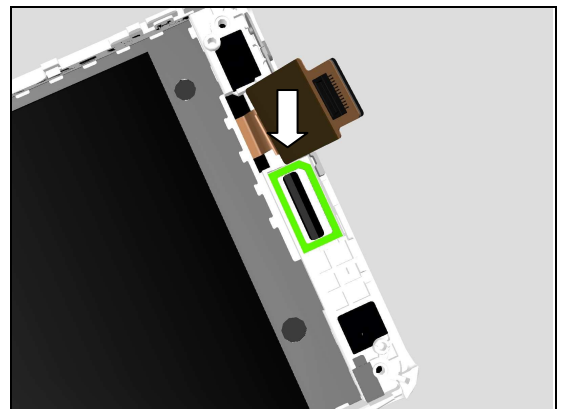
Clean the Receiver Adhesive on Front Cover Assy with TP.

**Scrap! The Receiver Adhesive can't be reused!**



#### INSTALLATION

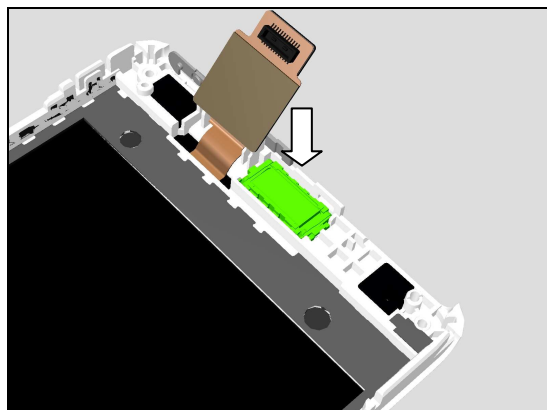
Place a new Receiver Adhesive in the correct position.



## Replacement

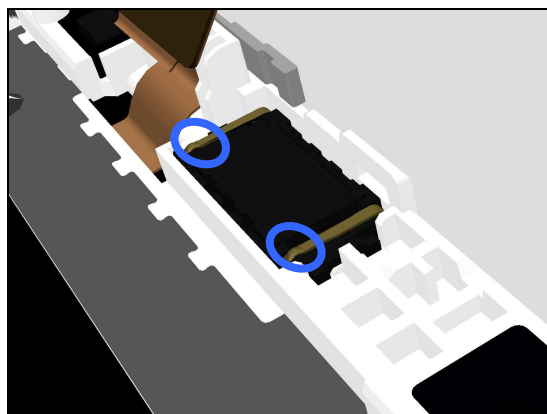
Place a new Receiver in the correct position.

***Don't touch the Receiver pins!***



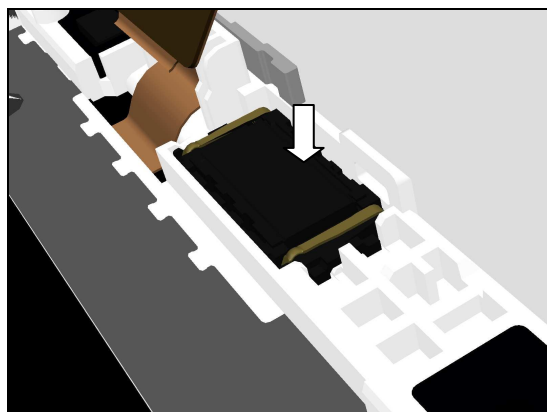
Check *Receiver's* pin correct direction as shown in the picture!

***Don't touch the Receiver pins!***



Press to secure its attachment.

***Do not touch the Receiver pins!***



## Replacement

### 4.18 Music Key

*Follow the 3.1 – 3.6 Disassembly instructions!*

Carry out the Removal as described below.

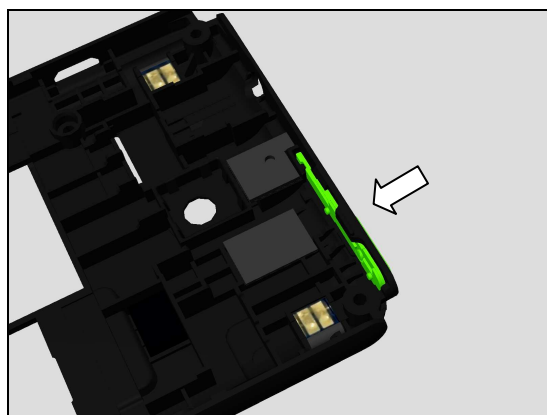
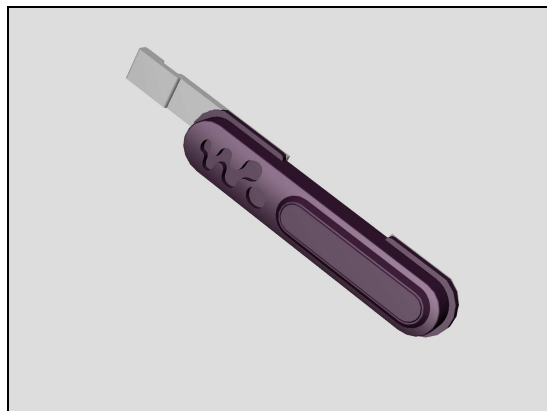
Prepare a new Music Key.

Carry out the Installation as described below.

*Follow the 5.1 – 5.6 Reassembly instructions!*

#### REMOVAL

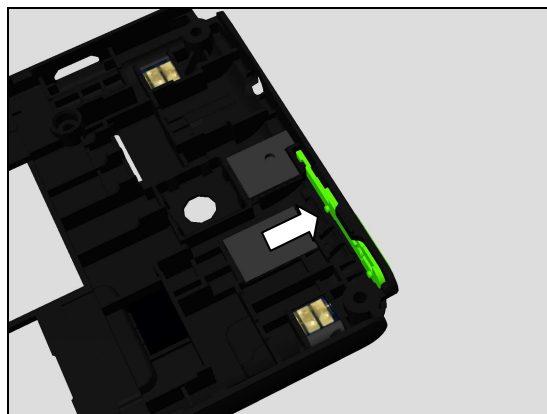
Remove the Music Key from Rear Cover Assy.



#### INSTALLATION

Place the Music Key in the correct position.

**Note:** pay more attention about its direction.



## Replacement

### 4.19 Power Key

*Follow the 3.1 – 3.6 Disassembly instructions!*

Carry out the Removal as described below.

Prepare a new Power Key.

Carry out the Installation as described below.

*Follow the 5.1 – 5.6 Reassembly instructions!*

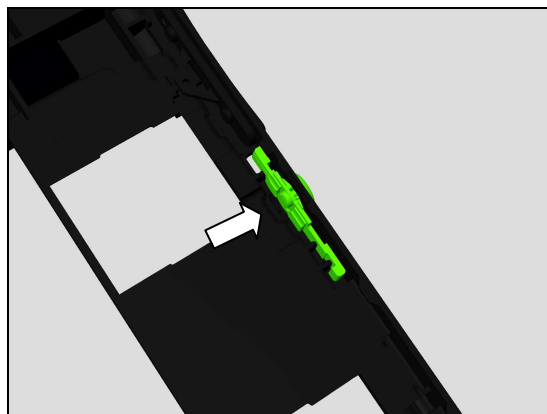
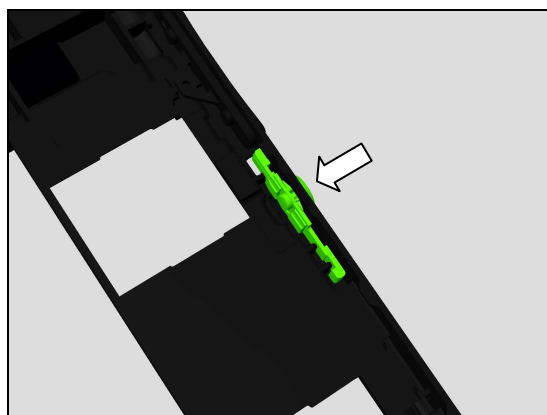
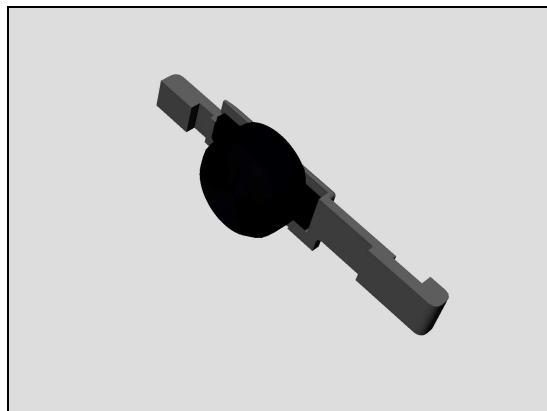
#### REMOVAL

Remove the Power Key from Rear Cover Assy.

#### INSTALLATION

Place the Power Key in the correct position.

**Note:** pay more attention about its direction.



## Replacement

### 4.20 Volume Key

*Follow the 3.1 – 3.6 Disassembly instructions!*

Carry out the Removal as described below.

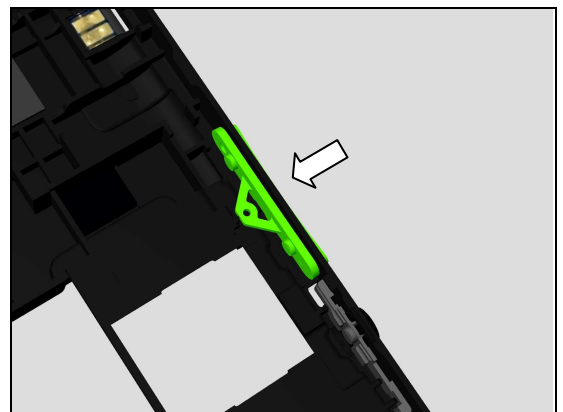
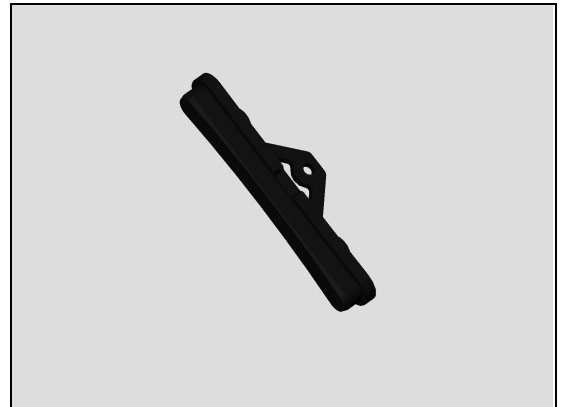
Prepare a new Volume Key.

Carry out the Installation as described below.

*Follow the 5.1 – 5.6 Reassembly instructions!*

#### REMOVAL

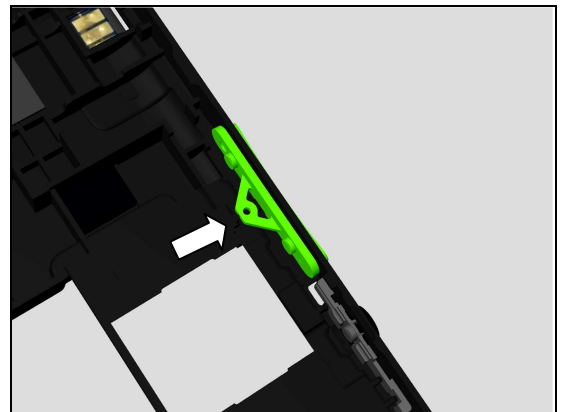
Remove the Power Key from Rear Cover Assy.



#### INSTALLATION

Place the Power Key in the correct position.

**Note: pay more attention about its direction.**



## Replacement

### 4.21 Liquid Intrusion Label

*Follow the 3.1 – 3.3 Disassembly instructions!*

Carry out the Removal as described below.

Prepare the new Liquid Intrusion Label.

Carry out the Installation as described below.

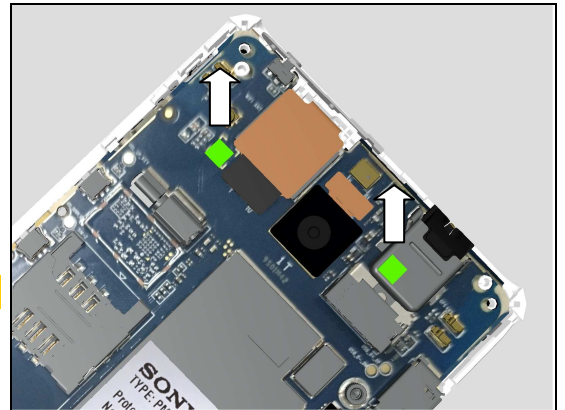
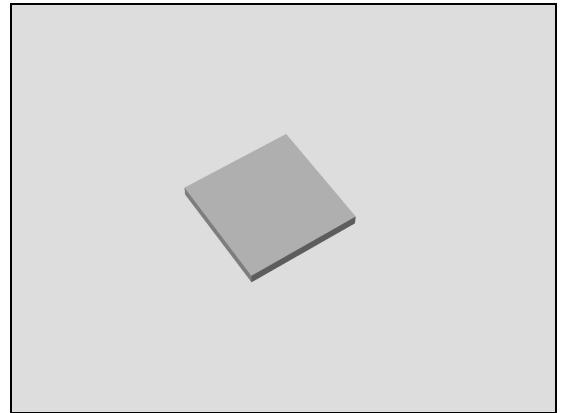
*Follow the 5.4 – 5.6 Reassembly instructions!*

#### REMOVAL

There are two Liquid Intrusion Labels on Main PBA.

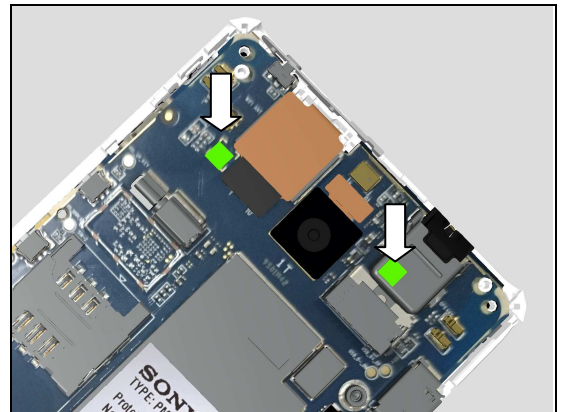
Remove them from Main PBA.

**Scrap! Not to be reused!**



#### INSTALLATION

Place two new Liquid Intrusion Labels on Main PBA.

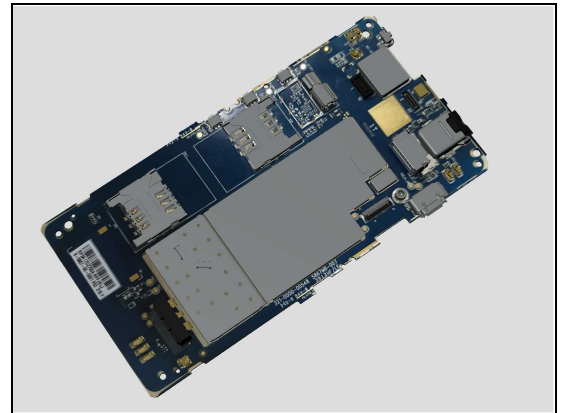




## Replacement

### 4.22 Board Swap – Replacement

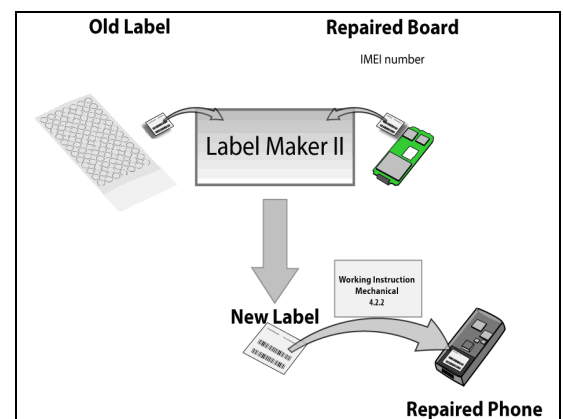
*Follow the 3.1 – 3.6 Disassembly instructions!*  
*Follow the 4.9, 4.10 Removal instructions!*  
 Replace the Swap Board.  
*Follow the 4.9, 4.10, 4.21 Installation instructions!*  
*Follow the 5.1 – 5.6 Reassembly instructions!*



### 4.23 Board Swap – Change Label

#### CHANGE LABEL

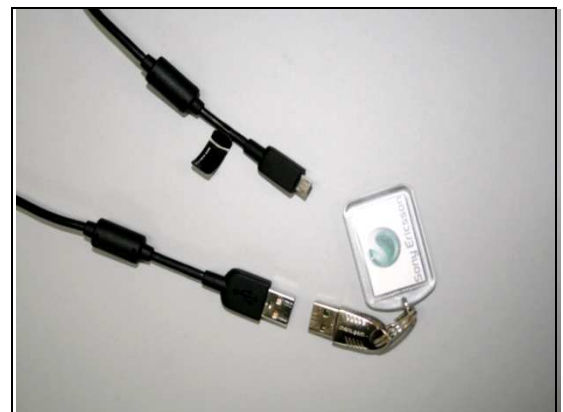
Follow the instructions in the Generic Repair Manual –  
 Build swap for change of label.



### 4.24 Board Swap – Customize of Software

#### CUSTOMIZE OF SOFTWARE

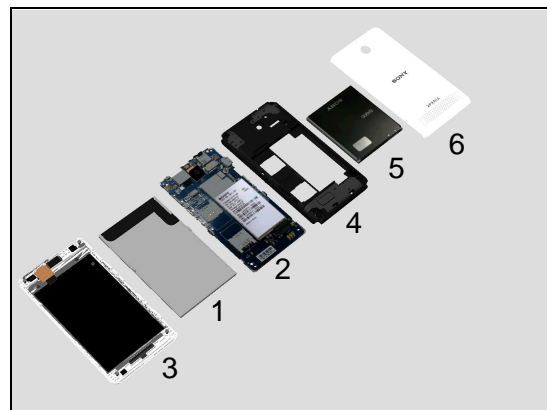
Follow the instructions in the Generic Repair Manual –  
 Build swap for customization of the software.



## 5 Reassembly

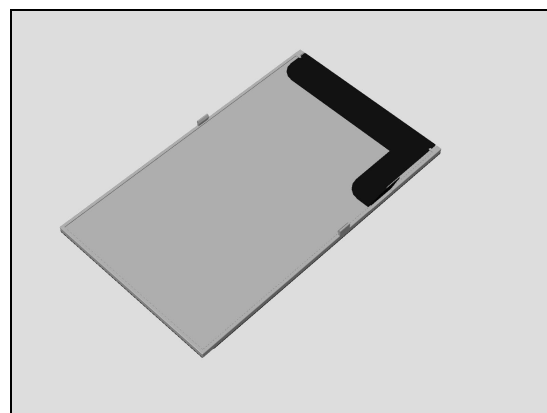
The reassembly is done in the following order:

1. LCM TFT 4.00 inch
2. Main PBA
3. Front Cover Assy with TP
4. Rear Cover Assy
5. Battery
6. Battery Cover Assy

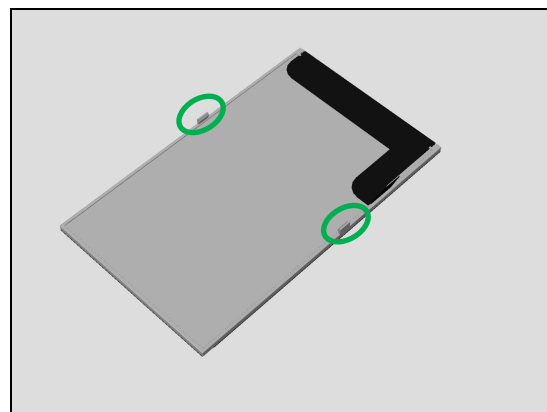


### 5.1 LCM TFT 4.00 inch

Prepare the LCM TFT 4.00 inch.



There are two hooks which will snap on Main PBA.



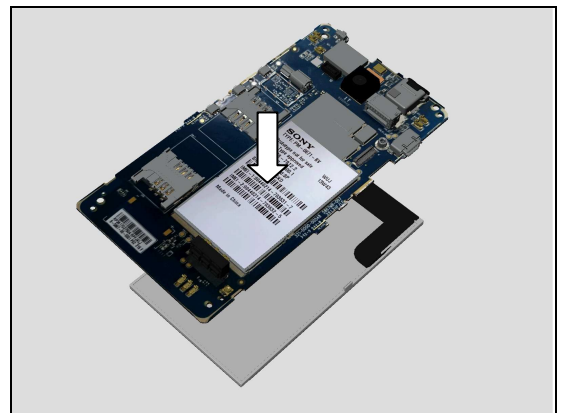
## Reassembly

### 5.2 Main PBA

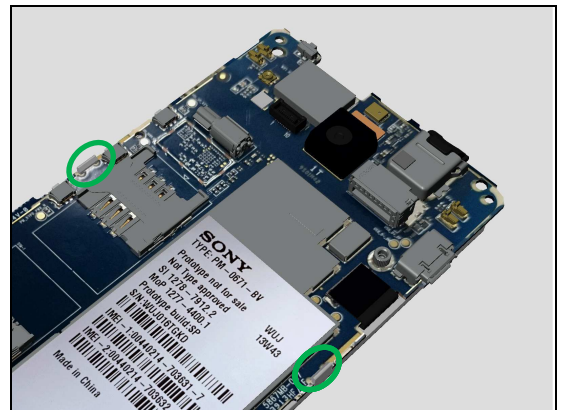
Prepare Main PBA.



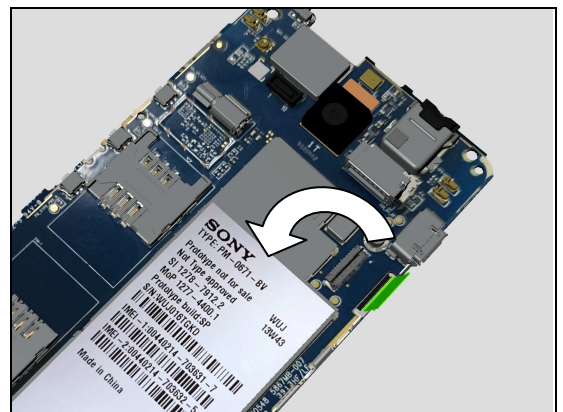
Place the Main PBA on LCM TFT 4.00 inch.



Press both two parts together to ensure two hooks well assembled as shown.

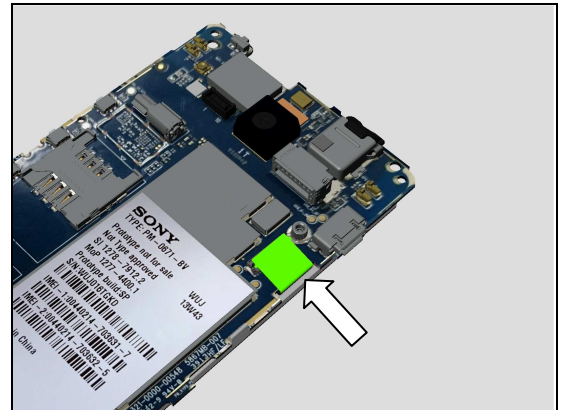


Turn around the LCM FPC back on Main PBA.

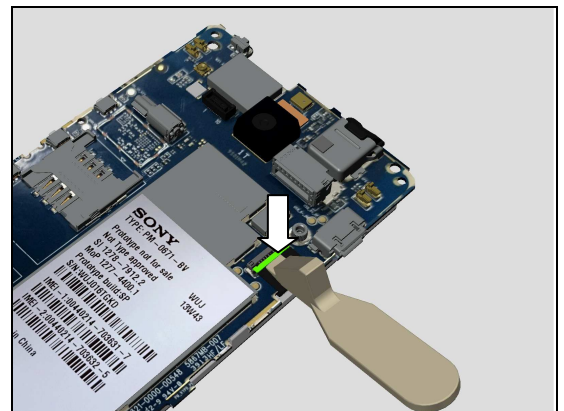


## Reassembly

Insert LCM FPC into its ZIF connector.

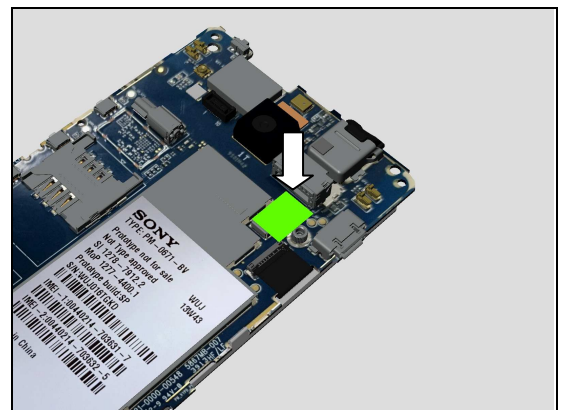


Close the LCM FPC ZIF connector.

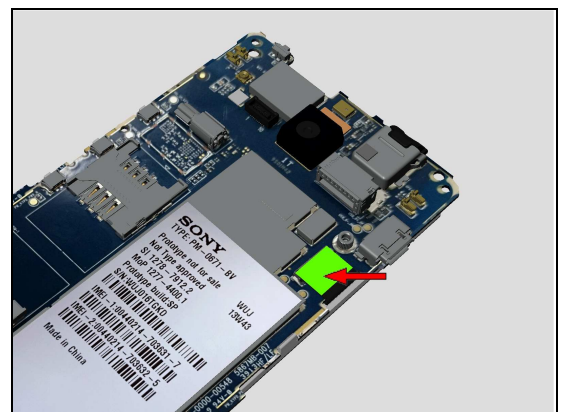


Assemble the new LCM FPC Mylar to cover the ZIF connector.

**LCM FPC Mylar cannot be reused!**



Press the LCM FPC Mylar to secure its attachment.



## Reassembly

### 5.3 Front Cover Assy with TP

Prepare the Front Cover Assy with TP.

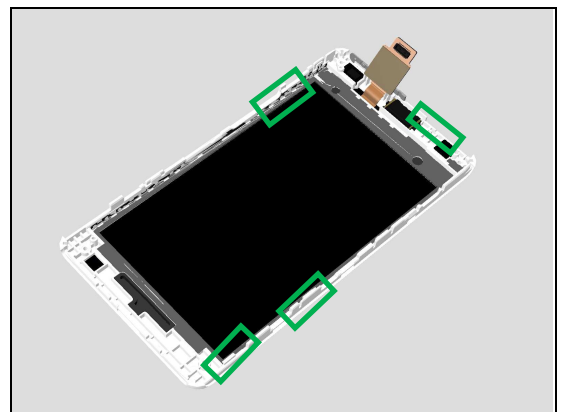
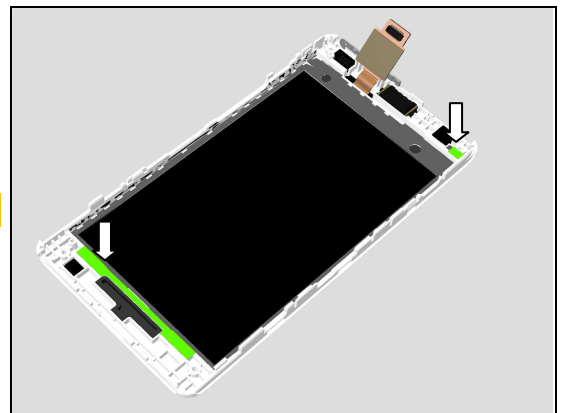
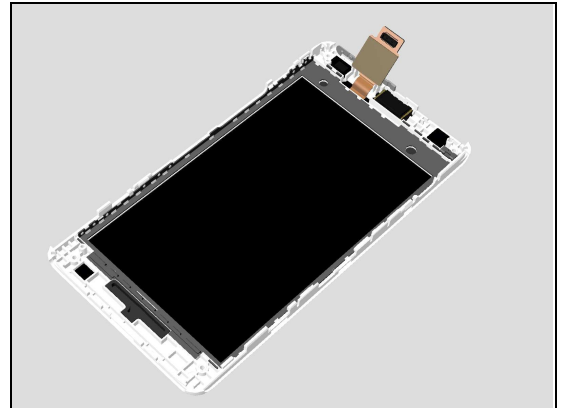
Remove the old Conductive Adhesive Cloth1 and Conductive Adhesive Cloth2 from Front Cover with TP or from Main PBA;

**Scrap! Not to be reused!**

Assemble new Conductive Adhesive Cloth1 and new Conductive Adhesive Cloth2 on Front Cover with TP.

Place Main PBA with LCM TFT 4.00 inch onto Front Cover Assy with TP.

There are 4 hooks around Front Cover Assy with TP.

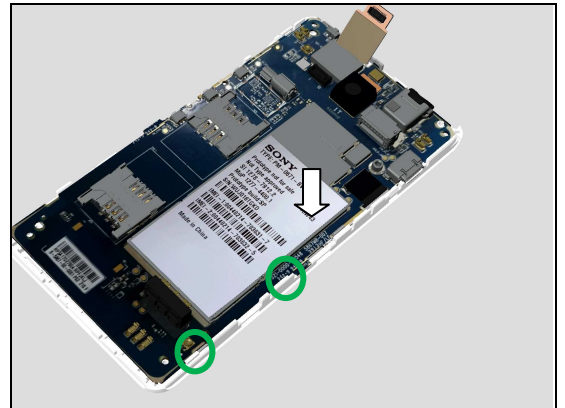


## Reassembly

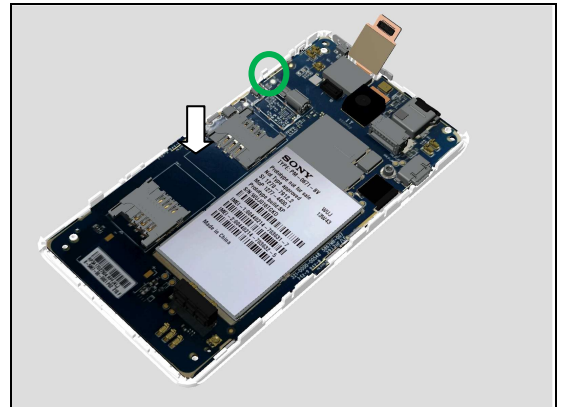
Insert Main PBA into the top hook first on Front Cover Assy with TP.



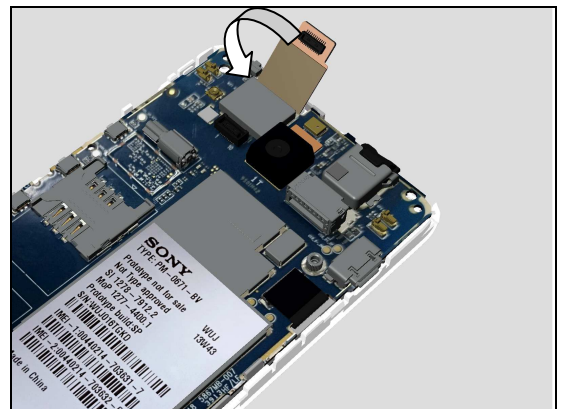
Press down Main PBA to snap this side hooks.



Press down Main PBA to snap the other side hooks.



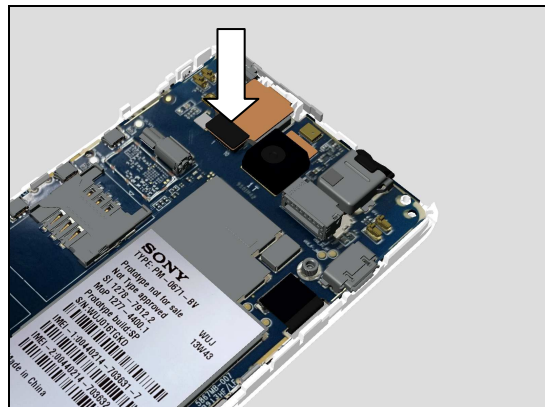
Turn around Touch Panel FPC onto Main PBA.





## Reassembly

Press the BtB connector to secure its attachment.



### 5.4 Rear Cover Assy

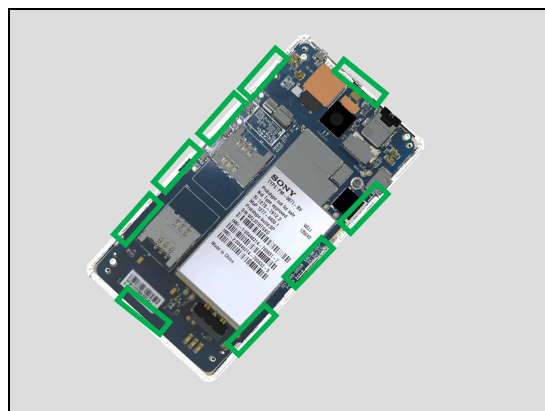
Prepare the Rear Cover Assy.



Place the Rear Cover Assy onto Front Cover Assy with TP.

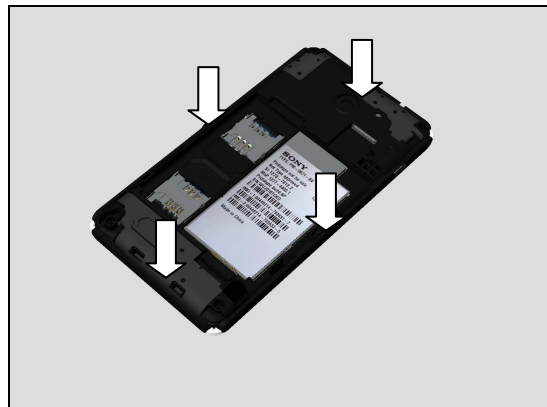


There are 9 hooks around Front Cover Assy with TP.



## Reassembly

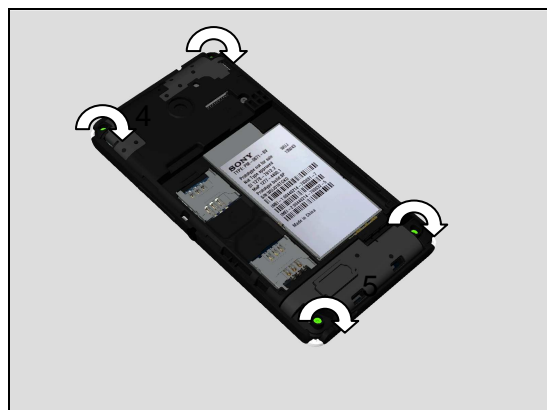
Press all four sides around Rear Cover Assy securing all hooks.



Apply 8.0 N.cm torque when tightening this Screw with Bits (T5) as shown.

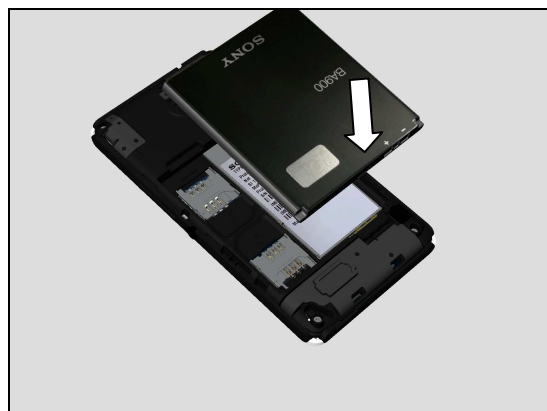


Apply 10.0 N.cm torque when tightening these four Screws with Bits (T5) as shown.



## 5.5 Battery

Insert Battery into its position.





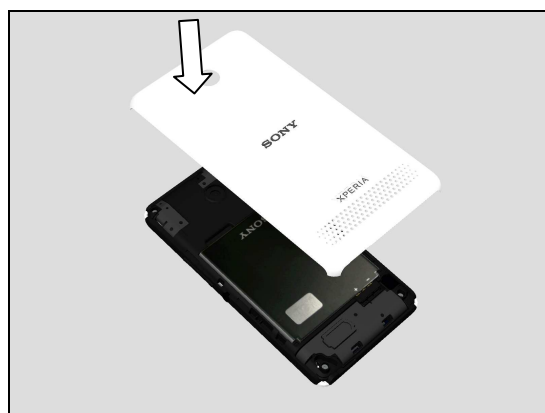
## Reassembly

Press down the Battery to secure its position.

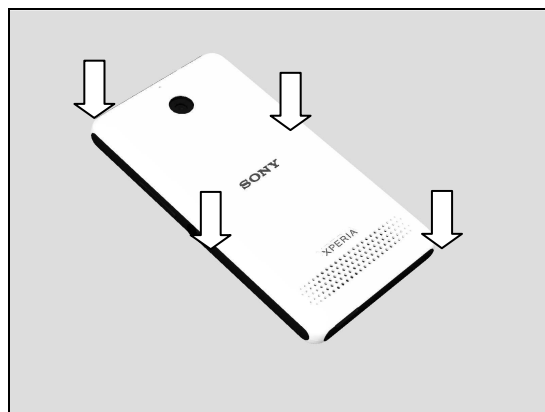


### 5.6 Battery Cover Assy

Prepare the Battery Cover Assy.



Press down all four sides to secure its position.



## 6 Revision History

Rev.	Date	Changes / Comments
1	2014-02-17	Initial release