

Tutorial for the M8800 Pixon

Be sure to have a backup of the data on your phone!
Flashing a phone is a tricky business so be sure to know the risks!

What do you need for installation:

- The desired firmware
- The Multiloader application
- The Samsung M8800 Pixon USB-cable
- The M8800

Preparation:

- 1) Firmware
- 2) Multiloader
- 3) Samsung M8800 USB cable
- 4) How to get you phone into firmware mode:



Picture 1. Download Mode.

Link FW-List G-I-J-L-M

The application that will flash the new firmware to your mobile.

Link MultiLoader

Original cable.

Press and hold the following buttons.

(Picture. 1):

- (1) Volume down
- (2) Camera button.
- (3) Power button.

Turn of your phone

Remove your MicroSD and SIM card, put the battery back in

- 5) Connect your phone with your pc.
- 6) Before you start do a hard reset.

Use the original USB cable 😊
Enter the following code: *2767*3855#

Flashing:

- 1) Open the MultiLoader.
- 2) Extract the firmware onto your desktop.
- 3) Select the second option (MSM6275/MSM6280/MSM6290) in the control section of the MultiLoader.
- 4) Put a check in Boot Change, Full Download and Master Rom:
- 5) Click the Boot button and browse to the firmware folder on the desktop and select the file.
- 6) Do the same for all the other buttons (work the list from top to bottom, skip FOTA, Tune and ETC).
- 7) Be sure to select the LOW version for the Rsrc2 button
- 8) Check if your phone is correctly connected.
If the Port Search is ready, click DOWNLOAD.
- 9) Leave your phone connected during the entire firmware installation.
- 10) When the MultiLoader says "All files complete", disconnect your phone, remove the battery, insert your MicroSD and SIM card
- 11) Turn on your phone, enter your PIN code. Your phone is now updated! .

MSM6275/MSM6280/MSM6290

Boot Change
Full Download
Master Rom

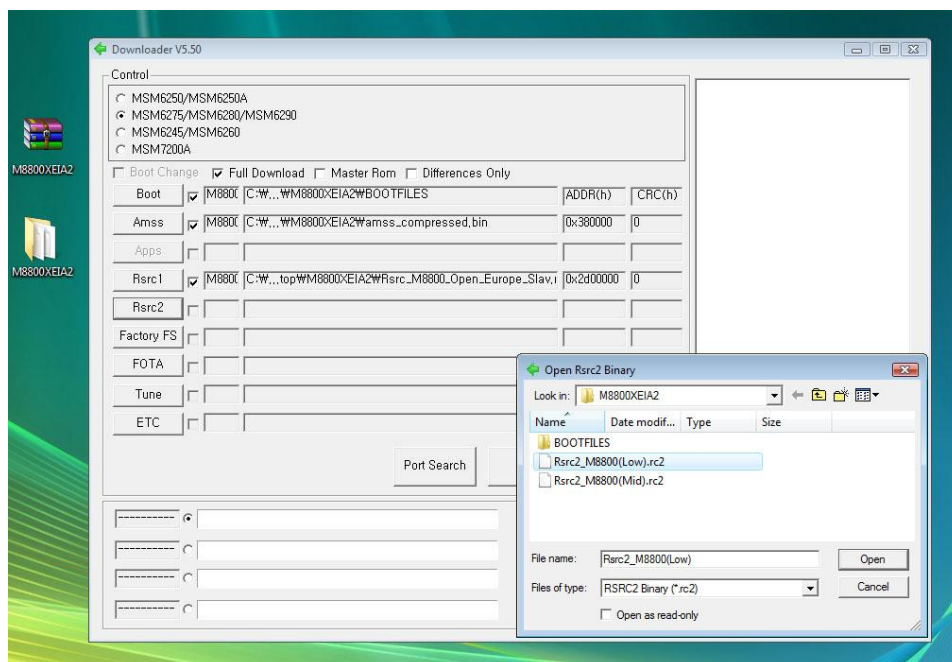
Boot = BOOTFILES

Following groups are NOT required:

- FOTA,
- Tune
- ETC

Always choose the LOW version.
Click on Port Search

Remove battery. Insert battery.
Flash is successfully completed.



Picture 2. Example picture Samsung Pixion.