

# Integrating Samsung SDK with NetBeans IDE

Version 0.9, Draft



## INFORMATION GUIDE

## **COPYRIGHT**

Samsung Electronics Co. Ltd.

This material is copyrighted by Samsung Electronics. Any unauthorized reproductions, use or disclosure of this material, or any part thereof, is strictly prohibited and is a violation under the Copyright Law. Samsung Electronics reserves the right to make changes in specifications at any time and without notice. The information furnished by Samsung Electronics in this material is believed to be accurate and reliable, but is not warranted true in all cases.

### **Trademarks and Service Marks**

The Samsung Logo is the trademark of Samsung Electronics. Java is the trademark of Sun Microsystems.

All other company and product names may be trademarks of the respective companies with which they are associated.



## About This Document

This document gives a brief description on how to Integrate Samsung SDK with NetBeans IDE.

### Scope

This document assumes that user has installed Samsung SDK and NetBeans IDE.

### Document History:

Date	Version	Comment
11/06/09	0.9	Draft

### Abbreviations:

IDE	Integrated Development Environment
SDK	Software Development Kit
Java ME	Java Micro Edition
MIDP	Mobile Information Device Profile

## Table of Contents

Introduction.....	5
Integrating Samsung SDK with NetBeans IDE .....	5

## List of Figures

Figure 1: NetBeans Tools .....	5
Figure 2: Project Right Click .....	6
Figure 3: Project Properties.....	7
Figure 4: Java Platform Manager .....	7
Figure 5: Platform Type .....	8
Figure 6: Platform Folders .....	9
Figure 7: Detected Platforms .....	10
Figure 8: Samsung SDK Added .....	11

## Introduction

NetBeans is a free open source Integrated Development Environment (IDE) for software developers created by “Sun Microsystems”. NetBeans IDE allows developers to create, test, debug and deploy the Java ME applications that run on many Samsung mobile devices, set-top boxes, Personal Digital Assistants (PDAs) and embedded systems.

Samsung SDK is fully compatible with NetBeans IDE. Integrating Samsung SDK with NetBeans IDE reduces development efforts and cost by speeding “Time to Market”.



Here NetBeans IDE 6.1 and Samsung SDK 1.1 for the Java ME Platform are used, to illustrate how to integrate Samsung SDK with NetBeans IDE.

## Integrating Samsung SDK with NetBeans IDE

Steps to integrate Samsung SDK with NetBeans IDE are as follows:

### Step 1:

Launch the NetBeans IDE.

Go to **Tools > Java Platforms** as shown in figure 1.

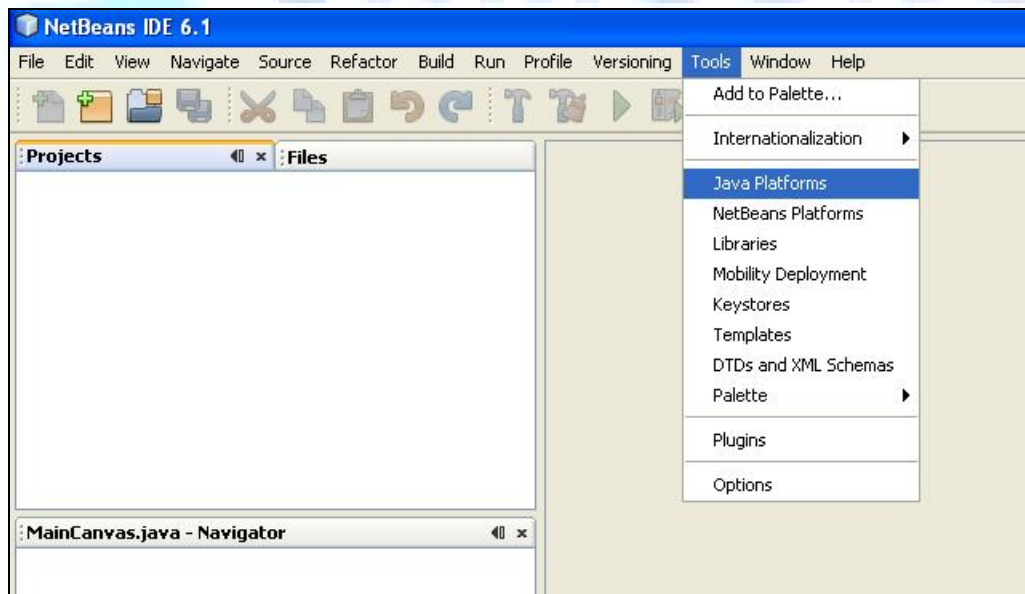


Figure 1: NetBeans Tools

(Or)

Go to **File > Open Projects**.

Select the required **Project** and right click to view the options.

Click **Properties** from the given options.

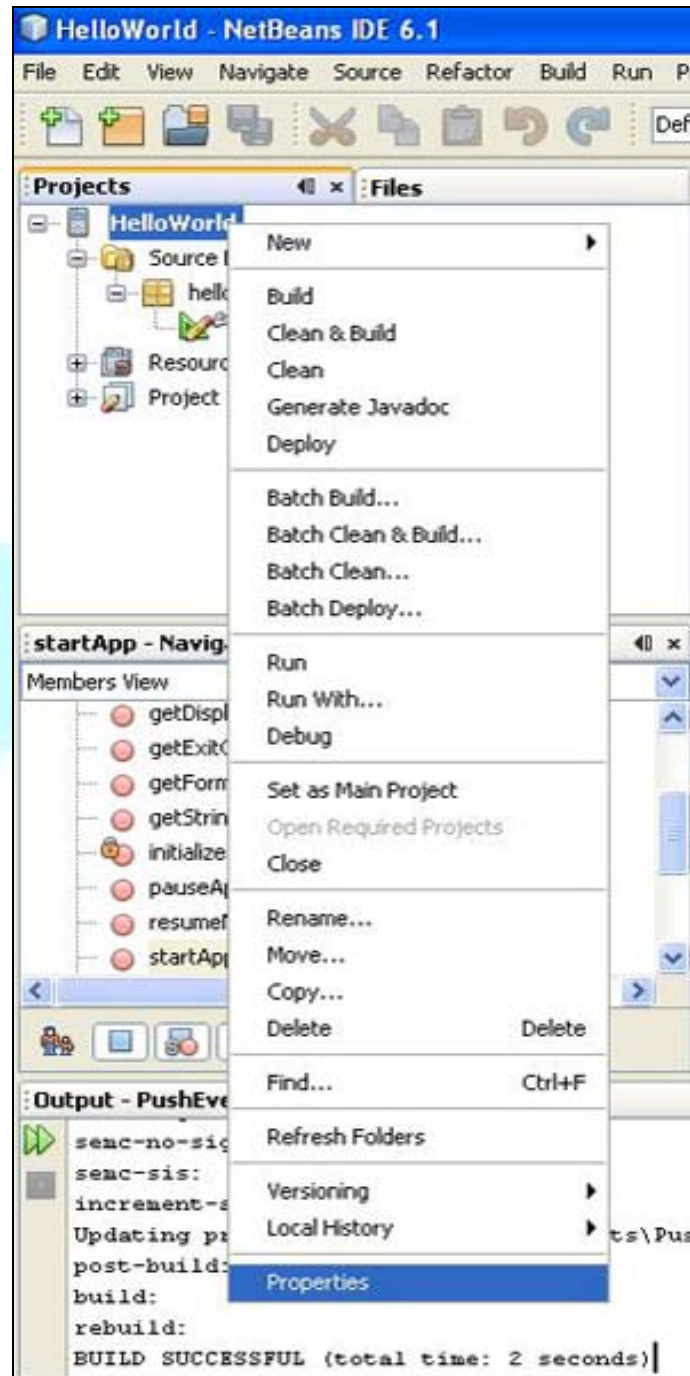


Figure 2: Project Right Click & Click Properties

## Step 2:

**Project properties** dialog box appears when clicked on Properties or Java Platform options as shown in figure 3.

Click  button.

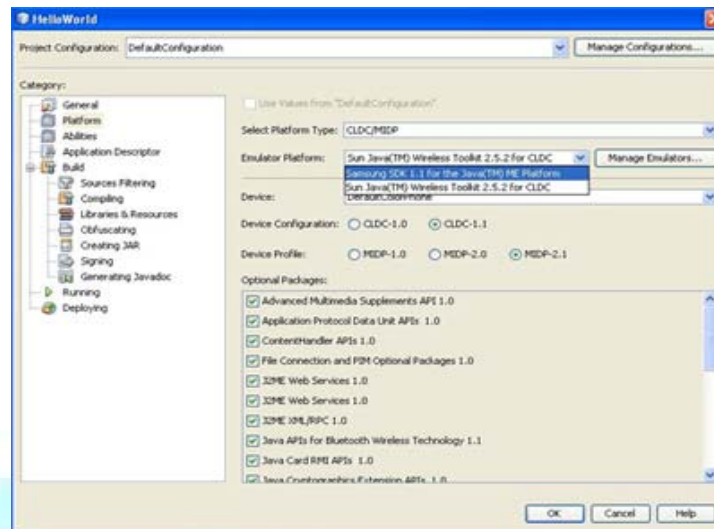


Figure 3: Project Properties

## Step 3:

**Java Platform Manager** dialog box appears as shown in figure 4.

Click  button.

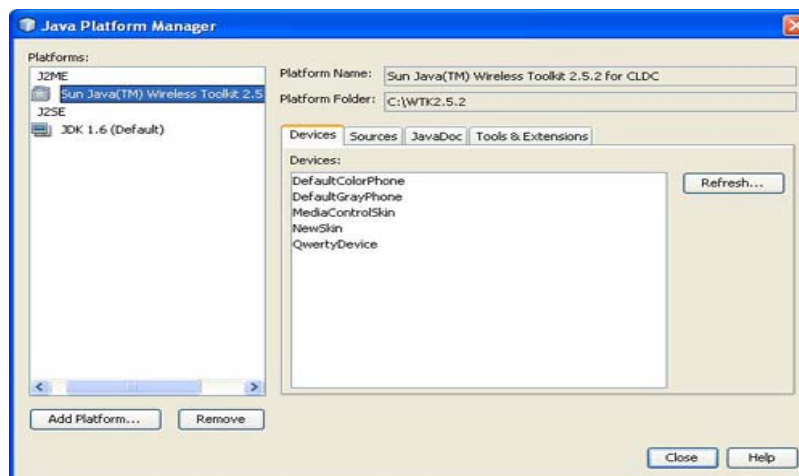
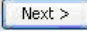


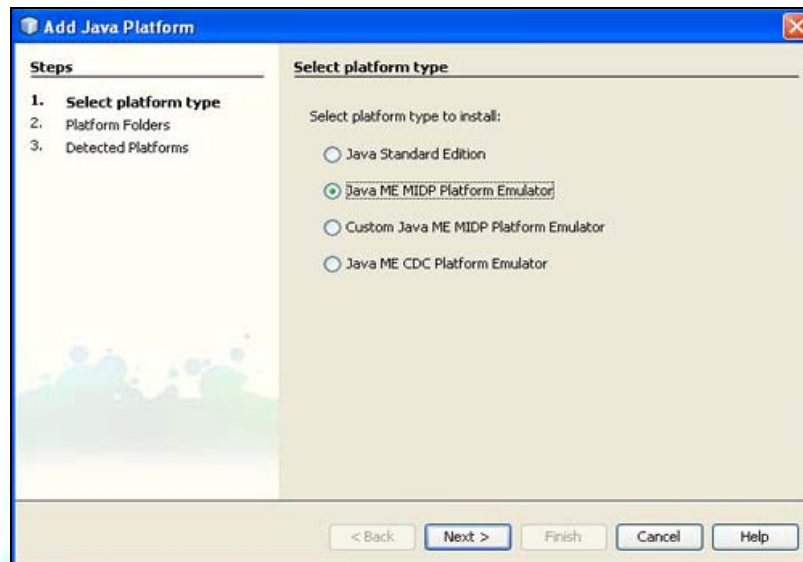
Figure 4: Java Platform Manager

## Step 4:

**Select Platform Type** dialog box appears as shown in figure 5.

Select **Java ME MIDP Platform Emulator** from the options.

Click  button.



**Figure 5: Platform Type**

## Step 5:

**Platform Folders** dialog box appears as shown in figure 6.

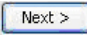
It detects and shows the Java ME platform present in the system.

Check for `Samsung_SDK_11` in the list.

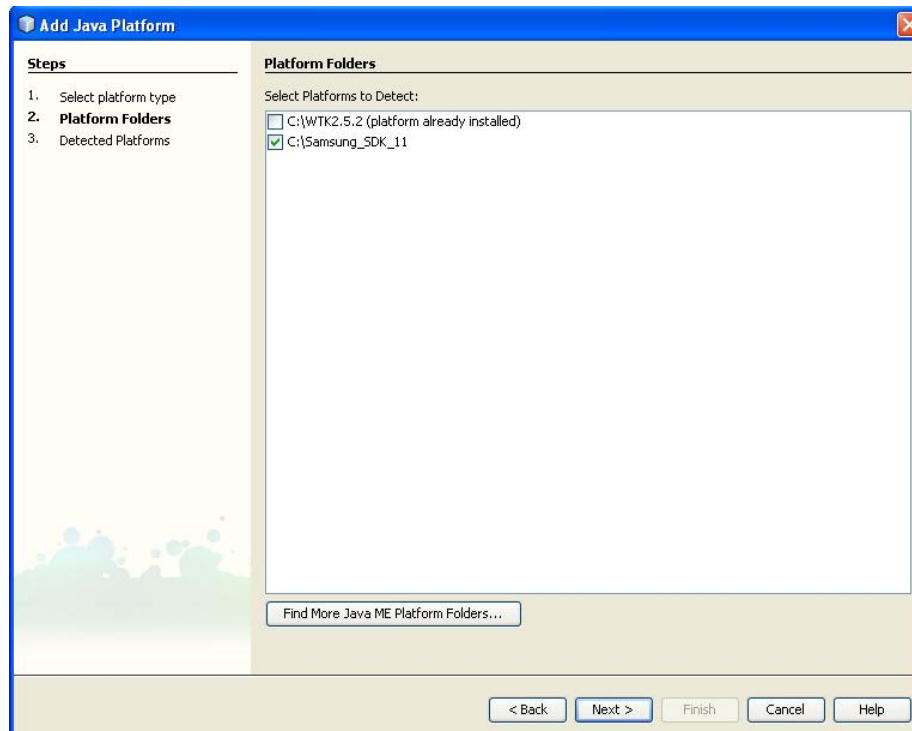


Platform Folders must show Samsung SDK 1.1 as one the options in the window. Absence of this option indicates that Samsung SDK 1.1 for Java ME Platform has not been installed. In that case first install Samsung SDK 1.1 for the Java ME Platform and then follow the above steps before continuing further.

Select `Samsung_SDK_11` from the list.

Click  button.



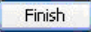


**Figure 6: Platform Folders**

**Step 6:**

**Detected Platforms** dialog box appears as shown in figure 7.

It shows information about the selected Samsung SDK under Platform Details.

Click  button.

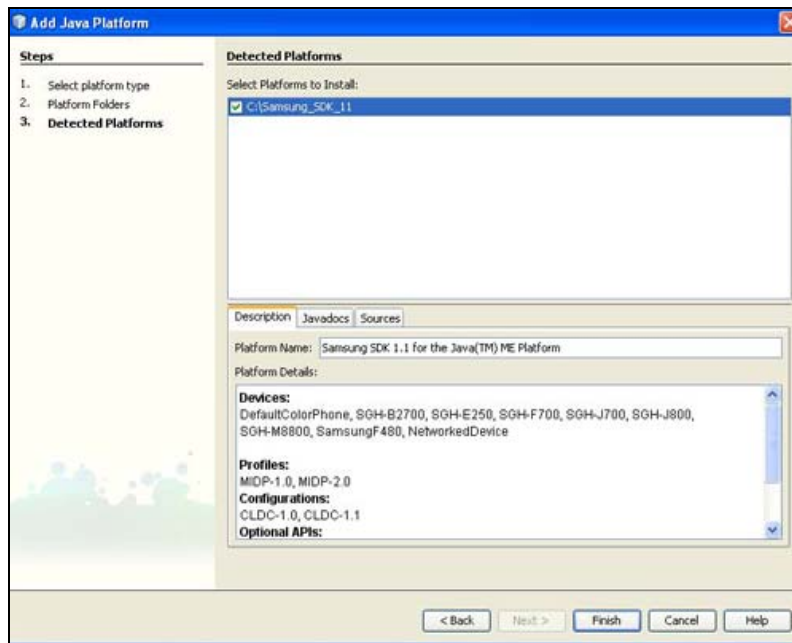


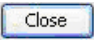
Figure 7: Detected Platforms

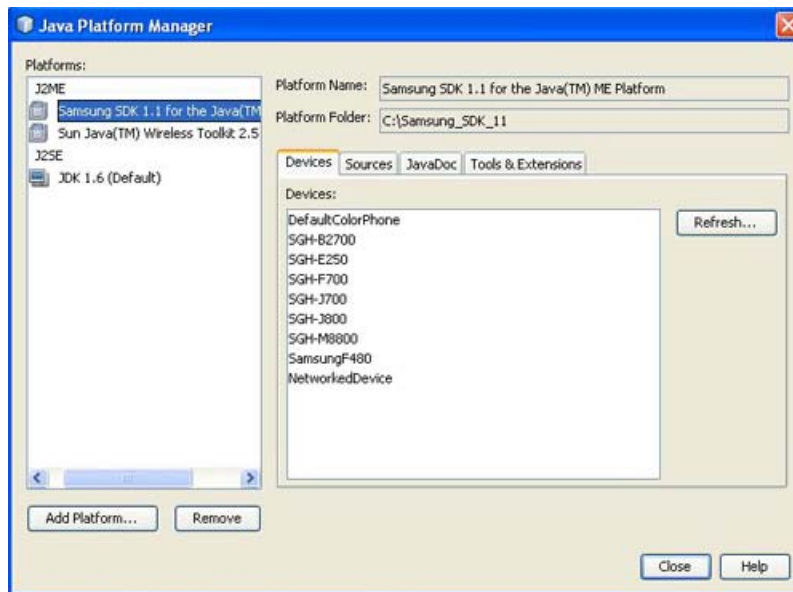
### Step 7:

**Java Platform Manager** dialog box with newly added Samsung SDK appears as shown in figure 8.

Samsung SDK 1.1 for the Java™ ME platform is seen under Java ME Platform.

Select Samsung SDK 1.1 to view the information about the SDK as shown in Figure8.

Click  button to complete the process.



**Figure 8: Samsung SDK Added**

**Congratulations!** Integration of Samsung SDK with NetBeans IDE is done. Now, you are ready to develop your Java ME application in Net Beans IDE using Samsung SDK. Please refer for more tutorials in **Other documents** section under **Getting Started** in **Knowledge Base**.