

# Java SE Development Kit (JDK) Installation Guide

Version 0.9, Draft



## INSTALLATION GUIDE

## **COPYRIGHT**

Samsung Electronics Co. Ltd.

This material is copyrighted by Samsung Electronics. Any unauthorized reproductions, use or disclosure of this material, or any part thereof, is strictly prohibited and is a violation under the Copyright Law Samsung Electronics reserves the right to make changes in specifications at any time and without notice. The information furnished by Samsung Electronics in this material is believed to be accurate and reliable, but is not warranted true in all cases.

## **Trademarks and Service Marks**

The Samsung Logo is the trademark of Samsung Electronics. Java is the trademark of Sun Microsystems.

All other company and product names may be trademarks of the respective companies with which they are associated.



## About This Document

This document elaborates steps for installing and uninstalling of Java SE Development Kit (JDK).

### Scope:

This document is targeted for all novice users.

### Document History:

Date	Version	Comment
02/02/09	0.9	Draft

### References:

JDK Installation for Microsoft Windows:

<http://java.sun.com/javase/6/webnotes/install/jdk/install-windows.html>

### Abbreviations:

JRE	Java Runtime Environment
JDK	Java Development Kit
SDK	Software Development Kit

## Table of Contents

Introduction.....	5
System Requirements.....	5
Software Requirements .....	5
Hardware Requirements .....	5
Installation .....	6
Download JDK Installer.....	6
Run JDK Installer .....	6
Uninstalling the JDK .....	10
Steps to uninstall the JDK .....	10

## Table of Figures

Figure 1: Security Warning .....	6
Figure 2: License Agreement.....	7
Figure 3: Custom Setup .....	7
Figure 4: Destination Folder.....	8
Figure 5: Installation Complete .....	8

## Introduction

Java SE Development Kit (JDK) is used for developing applications, applets and components using the Java programming language. JDK contains collection of runtime environment, development tools, additional libraries, sample applications, applets, and C header files to make up the Java Development Environment.

## System Requirements

Minimum software and hardware requirements for installing JDK are:

### Software Requirements:

- Microsoft Windows 2000 or Windows XP.
- This installation requires Windows Installer 2.0.

### Hardware Requirements:

- 562 MB hard disk space.
- 512 MB system RAM.



---

This installation has been tested with Microsoft Windows XP Professional Version 2002 Service Pack 3.

---

## Installation

In order to install Java SE Development Kit (JDK), follow the steps mentioned below:

### Download JDK Installer:

Download the installation file for your Windows platform from the link:

<http://java.sun.com/javase/downloads/index.jsp>

The downloaded file will be of the form *jdk-<version>-windows-i586-p.exe* where version can be *6u10*. The downloaded file might have a name similar to *jdk-6u10-windows-i586-p.exe* or other depending on the operating system.



Here *jdk-6u10-windows-i586-p.exe* is used for illustrating JDK installation.

### Run JDK Installer

**Step 1:** Double click on the received executable file to run the JDK Installer. "Security Warning" dialog box appears as shown in Figure 1.

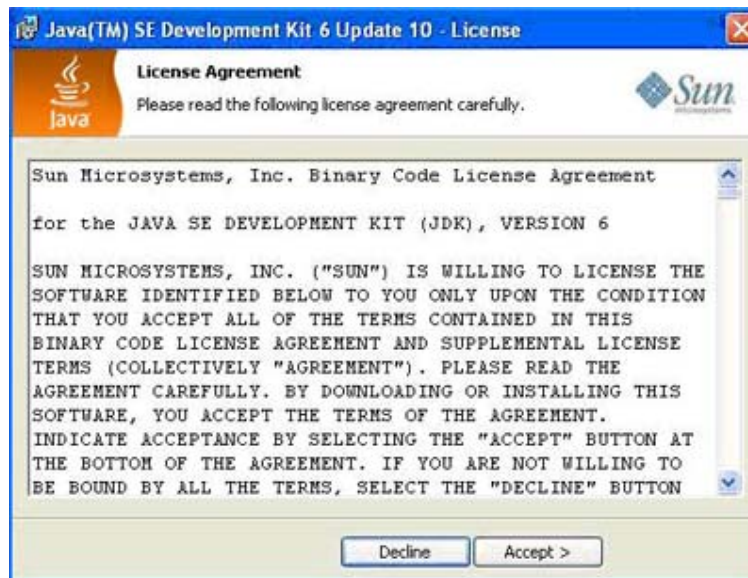
To run the installation, click  button or to exit setup, click  button.



Figure 1: Security Warning

**Step 2:** After clicking  button "License Agreement" dialog box appears as shown in Figure 2. Read the License Agreement carefully. To accept the agreement,

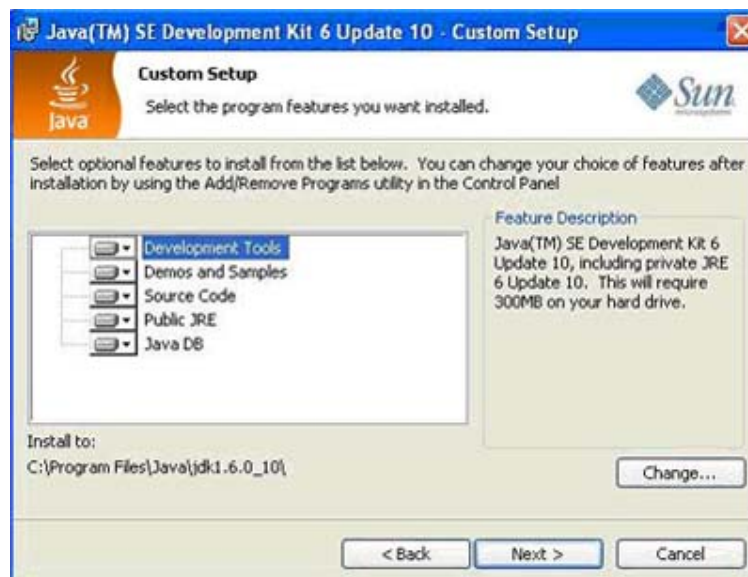
click **Accept >** button, else click **Decline** button to deny the License Agreement and/or exit setup.



**Figure 2: License Agreement**

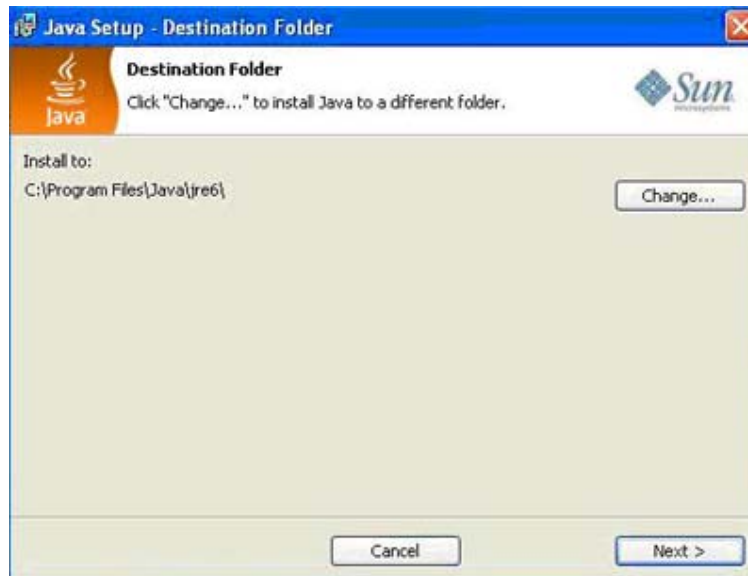
**Step 3:** On accepting the License Agreement, "Custom Setup" dialog box appears as shown in Figure 3. Custom Setup dialog box provides the option for selecting the program features. Click **Change...** button to change the location for installing JDK.

Click **< Back** button to go back to the previous dialog box. Click **Cancel** button to exit.



**Figure 3: Custom Setup**

**Step 4:** After clicking  button, "Destination Folder" dialog box appears as shown in Figure 4. Click  button to change the "Destination Folder" for JRE installation. Click  button to exit setup.



**Figure 4: Destination Folder**

**Step 5:** After clicking  button, installation begins and JDK Installation "Complete" dialog box appears after completion as shown in Figure 5. Click  button to complete the installation.



**Figure 5: Installation Complete**



**Congratulations!** On successful installation of JDK. Now Samsung SDK can be installed.  
For more help, go to Java Knowledge Base of Samsung Mobile Innovator site.

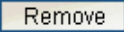


## Uninstalling the JDK:



Following steps will uninstall the JDK.

### Steps to uninstall the JDK:

1. Go to **Start > Control Panel > Add or Remove Programs**.
2. Select Java SE Development Kit from the list of programs installed.
3. Click on  button to uninstall the JDK.

