

Running Sample Application Using Eclipse IDE

Version 0.9, Draft



INFORMATION GUIDE

COPYRIGHT

Samsung Electronics Co. Ltd.

This material is copyrighted by Samsung Electronics. Any unauthorized reproductions, use or disclosure of this material, or any part thereof, is strictly prohibited and is a violation under the Copyright Law Samsung Electronics reserves the right to make changes in specifications at any time and without notice. The information furnished by Samsung Electronics in this material is believed to be accurate and reliable, but is not warranted true in all cases.

Trademarks and Service Marks

The Samsung Logo is the trademark of Samsung Electronics. Java is the trademark of Sun Microsystems.

All other company and product names may be trademarks of the respective companies with which they are associated.



About This Document

This document describes about how to create sample Java ME application using Eclipse IDE integrated with Samsung SDK.

Scope:

This document is targeted for Java developers intended to develop Java ME applications (MIDlet). It assumes that Java Development Kit (JDK), Java ME plug-in in Eclipse IDE, and Samsung SDK 1.1 are installed on the user computer.

Document History:

Date	Version	Comment
02/02/09	0.9	Draft

References:

To know more about eclipse installation, launching and integrating eclipse IDE with Samsung SDK, refer to the Knowledge Base under Samsung Mobile Innovator.

Abbreviations:

Java ME	Java Micro Edition
MIDP	Mobile Information Device Profile
IDE	Integrated Development Environment

Table of Contents

Introduction.....	4
Running Sample Application using Eclipse IDE	5

Table of Figures

Figure 1: New Project.....	5
Figure 2: Creating J2ME MIDlet	6
Figure 3: New J2ME Project window.....	6
Figure 4: Midlet Suite Properties.....	7
Figure 5: Java Settings window	7
Figure 6: Package Explorer.....	8
Figure 7: Select a Wizard window	8
Figure 8: Java ME MIDlet window	9
Figure 9: Package Explorer.....	9
Figure 10: Run Configuration.....	10
Figure 11: Create Configuration.....	10
Figure 12: Emulator.....	11

Introduction

Eclipse is an Integrated Development Environment (IDE), which can be used for developing, testing, and debugging Java ME applications. This document explains how to create and run a sample Java ME application using Eclipse IDE along with Samsung SDK.



Running sample application is demonstrated by using Eclipse SDK 3.4.1 here.

Running Sample Application using Eclipse IDE

In order to create and run a Sample Application using Eclipse IDE along with Samsung SDK, follow the steps mentioned below:

Step1: Go to [File > New > Project Menu](#) to create a new Java ME Project as shown in Figure 1.

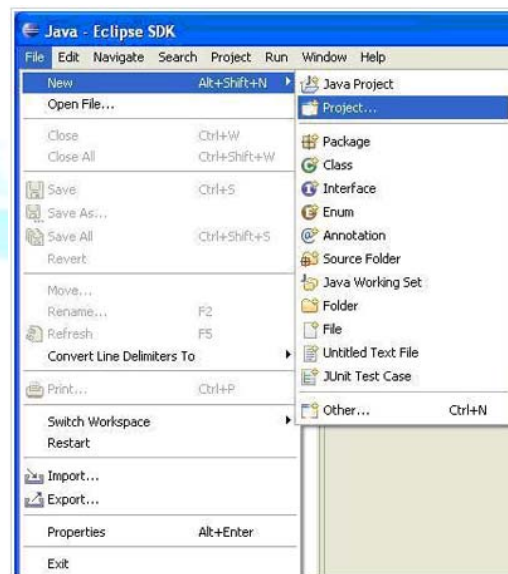


Figure 1: New Project

Step 2: After clicking Project option, "New Project" window appears as shown in Figure 2. It shows numbers of wizards expand J2ME node and click 'J2ME Midlet Suite'. Click button, to close the "New Project" window.

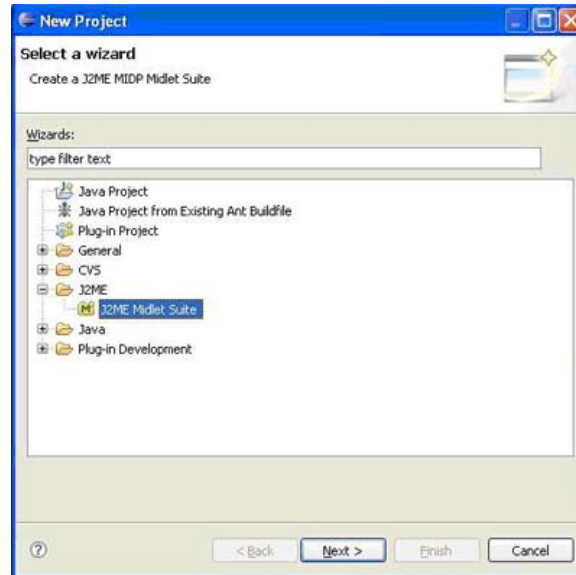


Figure 2: Creating J2ME MIDlet

Step 3: After clicking **Next >** button, "New J2ME Project" window appears as shown in Figure 3. Type in the project name under 'Project name'. Click **Browse...** button to select location for the project. To select the default location, click on 'Use default location' check box.

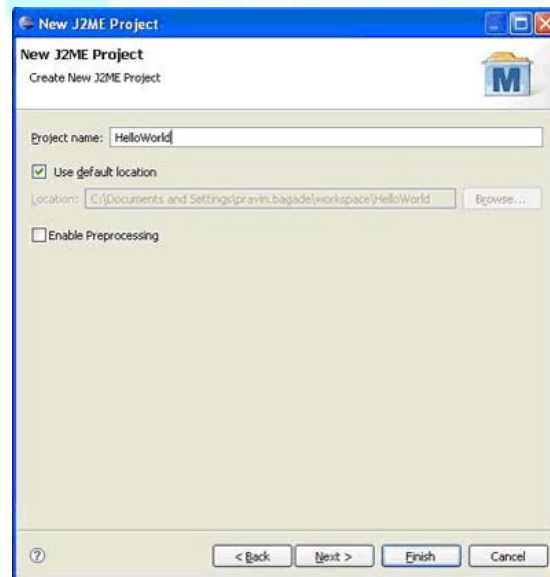


Figure 3: New J2ME Project window

Step 4: After clicking **Next >** button, "MIDlet Suit Properties" window appears as shown in Figure 4. User can check and change the 'Device' & 'Group' field.

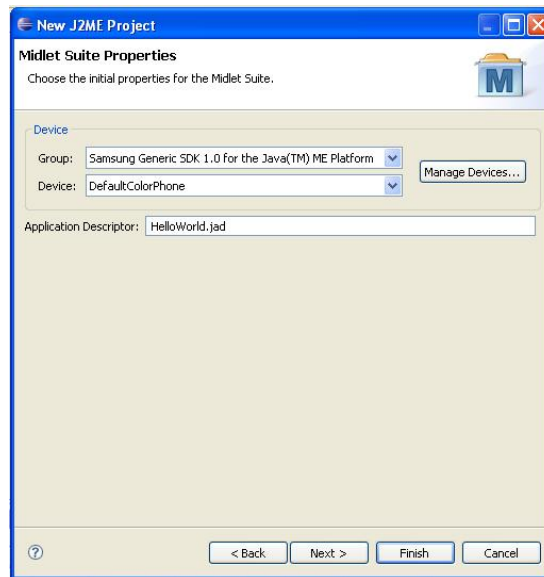


Figure 4: MIDlet Suite Properties

Step 5: After clicking **Next >** button "Java Setting" window appears as shown in Figure 5 or click on **Finish** button to finish the project setup.

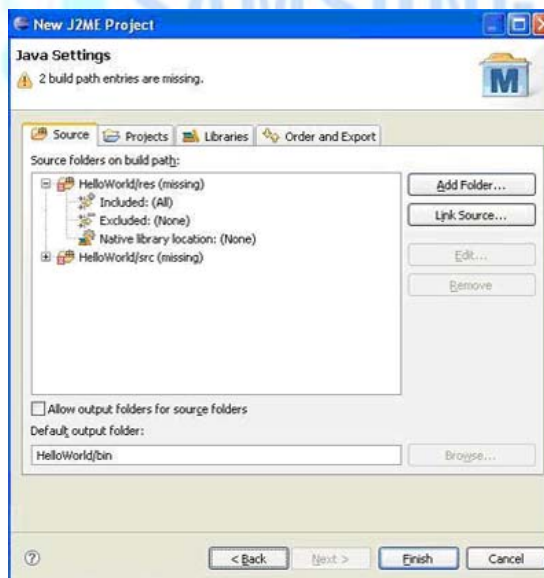


Figure 5: Java Settings window

Step 6: After clicking **Finish** button, "Package Explorer" appears as shown in Figure 6. 'Package Explorer' shows the project structure. Right-click on the project and go to **New > Other** option to create J2ME MIDlet.

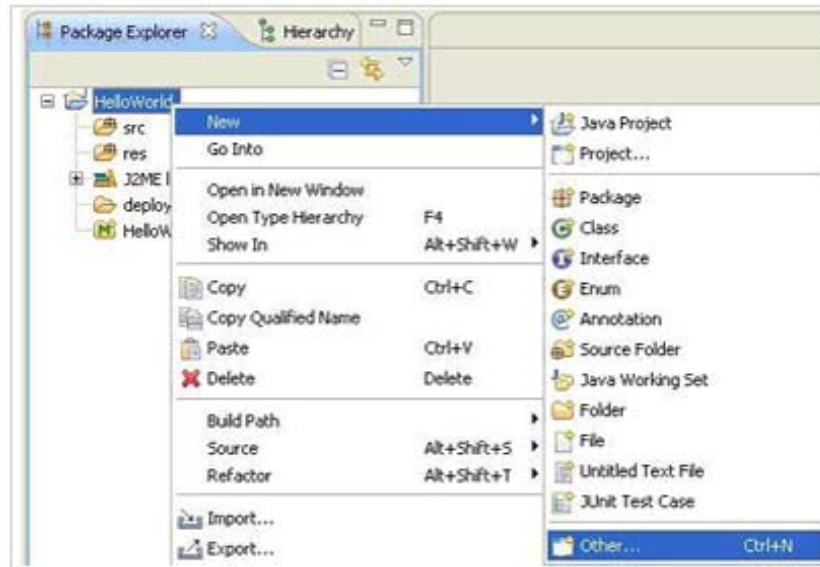


Figure 6: Package Explorer

It will open the New window for creating a Java ME MIDlet. Select the J2ME Midlet option by expanding 'J2ME' node as shown in figure 7. Click button to close the New window.

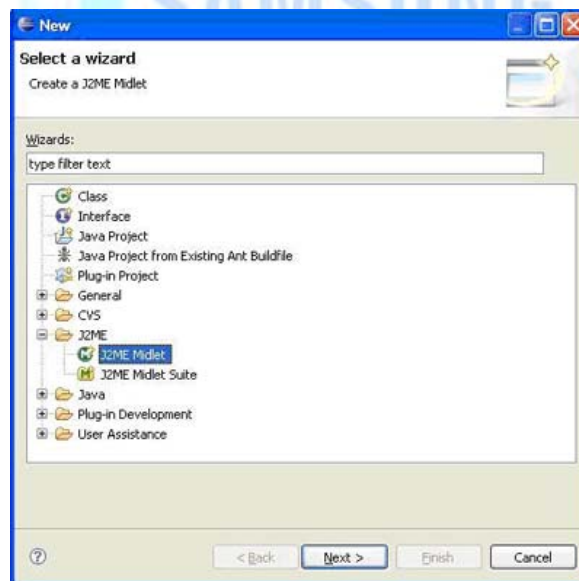


Figure 7: Select a Wizard window

Step 7: After clicking button, "J2ME Midlet" window appears as shown in Figure 8. It contains MIDlet related information field. Fill in the required field as per the project and click button to apply the changes on MIDlet.

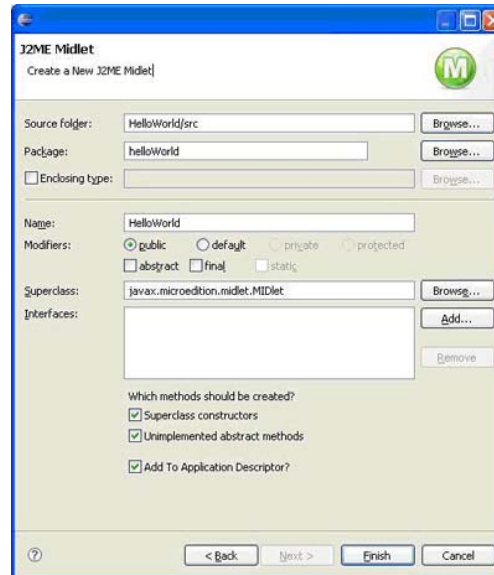


Figure 8: Java ME MIDlet window

Step 8: After clicking [Finish](#) button, Eclipse IDE main window appears. Eclipse IDE window shows the "Package Explorer" as shown in Figure 9.



Figure 9: Package Explorer

Right-click on the created project to run the application. Go to [Run As > Run Configuration](#) as shown in Figure 10.

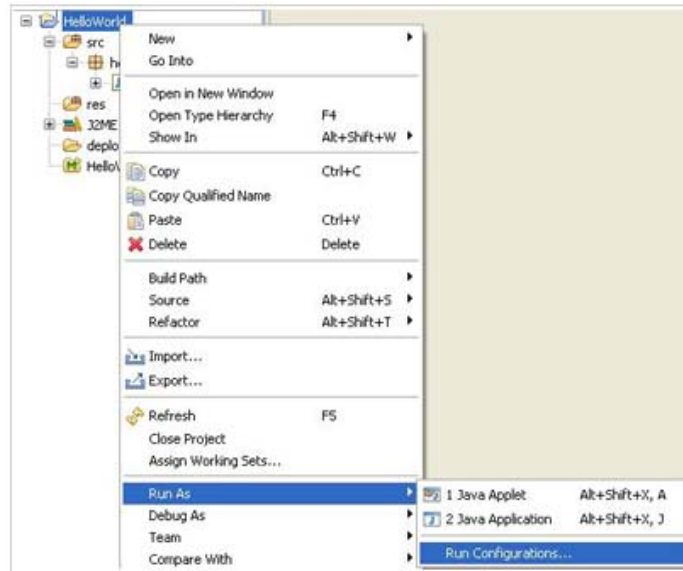


Figure 10: Run Configuration

Step 9: After clicking on 'Run Configuration' option it will open the "Run Configurations" window as shown in figure 11. Select the 'Wireless Toolkit Emulator' to run J2ME application. It will show MIDlet related properties to user, click on **Browse...** button to select the Project. Click on **Search** button to select the MIDlet. To apply selected setting to project click on **Apply** button, finally to run the application click on **Run** button.

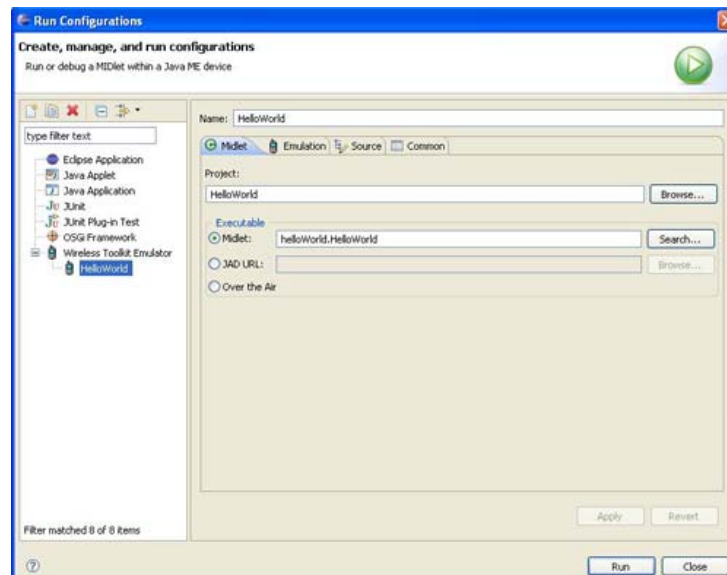


Figure 11: Create Configuration

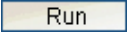
After clicking  button, it will invoke the selected emulator as shown in Figure 12..



Figure 12: Emulator

Congratulations! Sample application using eclipse IDE is done.

After understanding how to run sample Java ME application using Eclipse SDK along with Samsung SDK, you are ready to develop your Java ME application using Eclipse IDE along with Samsung SDK. For more help, go to Java Knowledge Base of Samsung Mobile Innovator site.