

Samsung SDK 1.1 for the Java ME Platform

Version 0.9, Draft



INSTALLATION GUIDE

COPYRIGHT

Samsung Electronics Co. Ltd.

This material is copyrighted by Samsung Electronics. Any unauthorized reproductions, use or disclosure of this material, or any part thereof, is strictly prohibited and is a violation under the Copyright Law. Samsung Electronics reserves the right to make changes in specifications at any time and without notice. The information furnished by Samsung Electronics in this material is believed to be accurate and reliable, but is not warranted true in all cases.

Trademarks and Service Marks

The Samsung Logo is the trademark of Samsung Electronics. Java is the trademark of Sun Microsystems.

All other company and product names may be trademarks of the respective companies with which they are associated.



About This Document

This document elaborates steps for installing and uninstalling of Samsung SDK 1.1 for the Java ME platform.

Scope:

This document is targeted for all novice users. It assumes that Java Development Kit (JDK) is installed on the user computer.

Document History:

Date	Version	Comment
04/02/09	0.9	Draft

Abbreviations:

JRE	Java Runtime Environment
Java ME	Java Micro Edition
CLDC	Connected Limited Device Configuration
MIDP	Mobile Information Device Profile
MSA	Mobile Service Architecture
JVM	Java Virtual Machine

Table of Contents

Introduction.....	5
System Requirements	5
Software Requirements	5
Hardware Requirements.....	5
Installation	6
Download SDK Installer	6
Run SDK Installer	6
Uninstalling Samsung SDK.....	12
Steps to uninstall the SDK.....	12

Table of Figures

Figure 1: Welcome Dialog box.....	6
Figure 2: License Agreement.....	7
Figure 3: Java Virtual Machine Folder.....	7
Figure 4: Quick Time Player Folder	8
Figure 5: Destination Folder.....	8
Figure 6: Program Folder.....	9
Figure 7: Current Settings.....	9
Figure 8: Installation Progress Status.....	10
Figure 9: Installation Complete	10

Introduction

Samsung SDK 1.1 for the Java ME platform is a set of tools for developing Mobile Applications for Samsung mobile phones. Samsung SDK is based on Connected Limited Device Configuration (CLDC) and Mobile Information device Profile (MIDP). It also supports the implementation of complete Mobile Service Architecture (MSA). The toolkit includes the emulation environments, debug tools, performance optimization tools, documentation, and sample demo applications. Samsung SDK provides state of the art features for developers to develop innovative mobile applications/solutions/games and so on.

System Requirements:

Minimum software and hardware requirements for installing Samsung SDK are:

Software Requirements:

- Windows XP
- JDK 1.5 or later
- QuickTime Player

Hardware Requirements:

- 150 MB hard disk space
- 128 MB system RAM
- 800 MHz Pentium III CPU



This installation has been tested with Microsoft Windows XP Professional Version 2002 Service Pack 3 and QuickTime Version 7.5.5.

Installation

In order to install Samsung SDK, follow the steps mentioned below:

Download SDK Installer:

Download the file from the link [New Samsung SDK](#). The downloaded file will be of the form *SAMSUNG-sdk-bin.exe* under zipped file.

Run SDK Installer:

Step 1: Run the SDK Installer by double clicking on the executable file. File name will be *SAMSUNG-sdk-bin.exe*. "Welcome" dialog box appears as shown in Figure 1.



Figure 1: Welcome Dialog box

Click button to exit setup.

Step 2: After clicking button, "License Agreement" dialog box appears as shown in Figure 2.

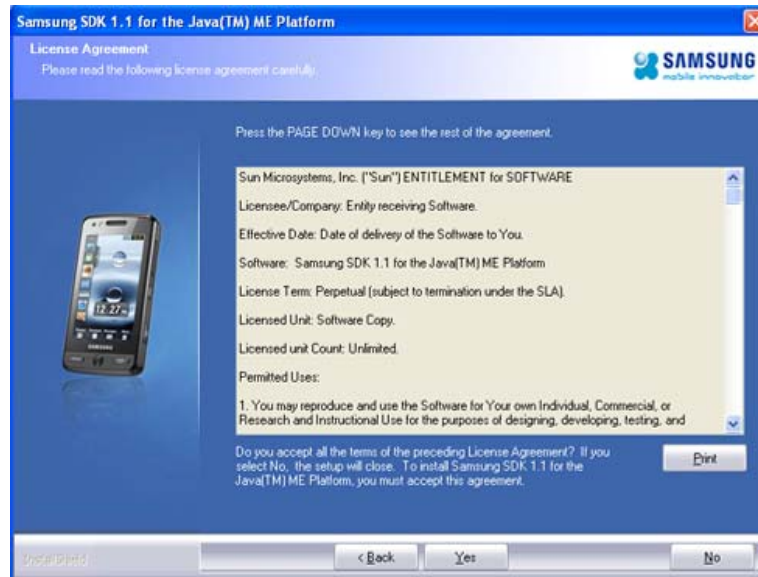


Figure 2: License Agreement

Read the License Agreement carefully. To accept the agreement, click button else click button to deny the License Agreement and/or exit setup. To go back to the "Welcome" dialog box and click button.

Step 3: On accepting License Agreement, "Java Virtual Machine Location" dialog box appears as shown in Figure 3. The installer detects the presence of Java Virtual Machine and shows the default path where Java Virtual Machine is installed. Click button to change the shown location.



Figure 3: Java Virtual Machine Folder

Click button to exit setup.

Step 4: After clicking **Next >** button, "Quick Time Player Location" dialog box appears as shown in Figure 4. The installer detects the presence of Quick Time Player and will show the path where Quick Time Player is installed.

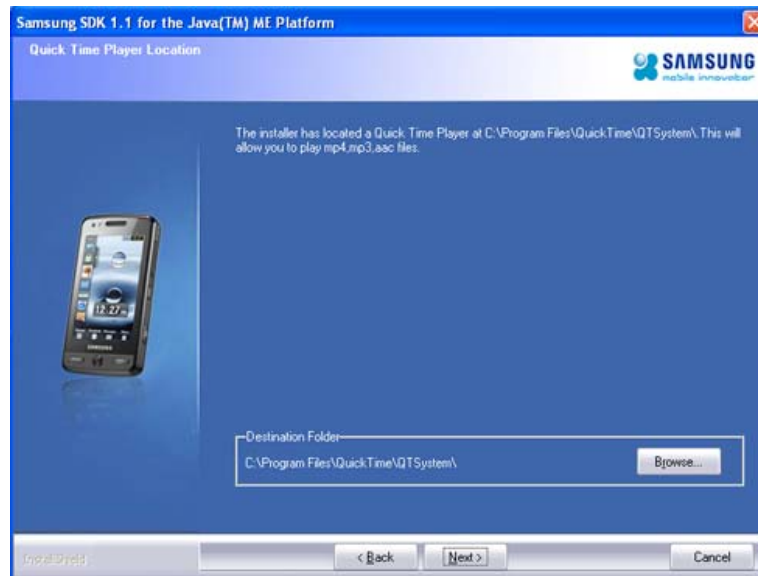


Figure 4: Quick Time Player Folder

Click **Cancel** button to exit setup. Click **< Back** button to go back to the previous dialog box.

Step 5: After clicking **Next >** button, "Choose Destination Location" dialog box appears as shown in Figure 5. This screen shows the default path where Samsung SDK will be installed. Click **Browse...** button to install it in a different location.



Figure 5: Destination Folder

Click button to exit setup. Click button to go back to the previous dialog box.

Step 6: After clicking button, "Select Program Folder" dialog box appears as shown in Figure 6. By default, it will be installed in Samsung SDK 1.1 for the Java(TM) ME Platform. To select different Program Folder choose one of the folders from the existing folders shown.



Figure 6: Program Folder

Step 7: After clicking button, "Start Copying Files" dialog box appears as shown in Figure 7. This screen shows the summary of Destination Directory, Program Folder and JVM Folder where Samsung SDK will be installed.

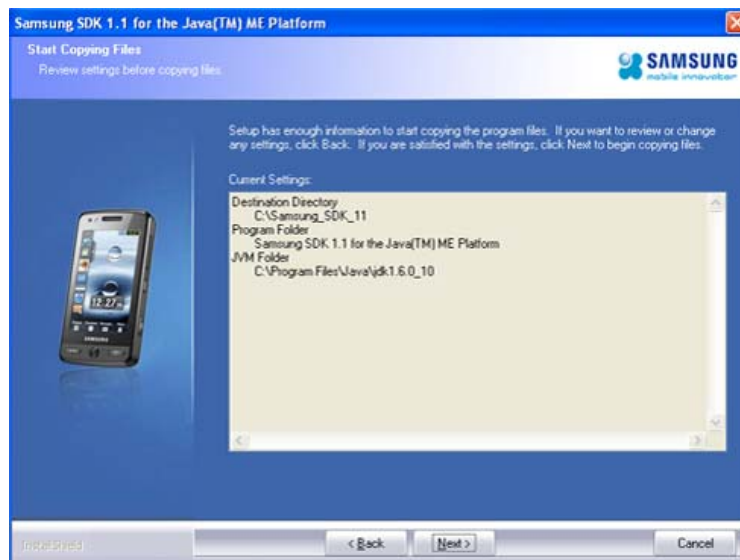


Figure 7: Current Settings

Click button to exit setup. Click button to go back to the previous dialog box.

Step 8: After clicking button, "Setup Status" dialog box appears as shown in Figure 8. This dialog box shows the installation process status of Samsung SDK.



Figure 8: Installation Progress Status

Once Samsung SDK is installed, "InstallShield Wizard Complete" dialog box appears as shown in Figure 9.

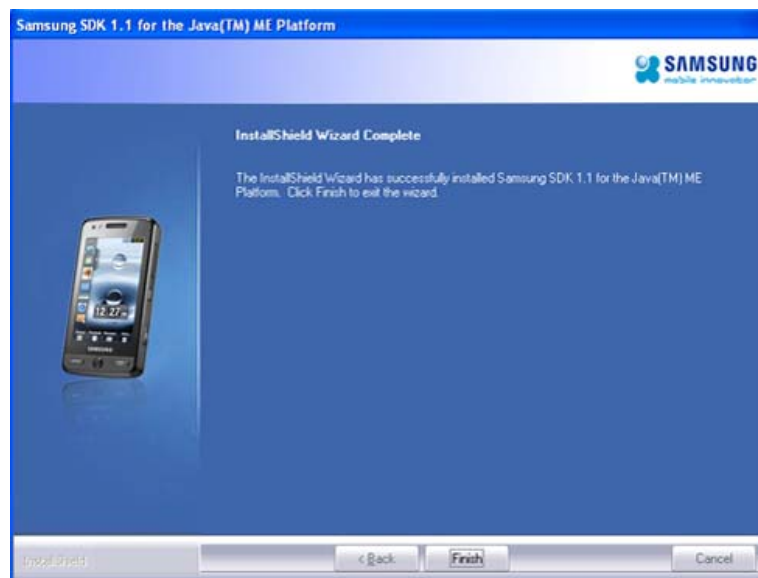



Figure 9: Installation Complete

Click  button to complete the installation. Samsung SDK has been installed successfully.

Congratulations! On successful installation of Samsung SDK. Now, you are ready to develop your Java ME application using Samsung SDK. For more help, go to Java Knowledge Base of Samsung Mobile Innovator site.



Uninstalling Samsung SDK:



Following steps will uninstall the SDK.

Steps to uninstall the SDK:

1. Go to **Start > Programs > Samsung SDK**.
2. Click on [Uninstall](#) option to uninstall the SDK.

